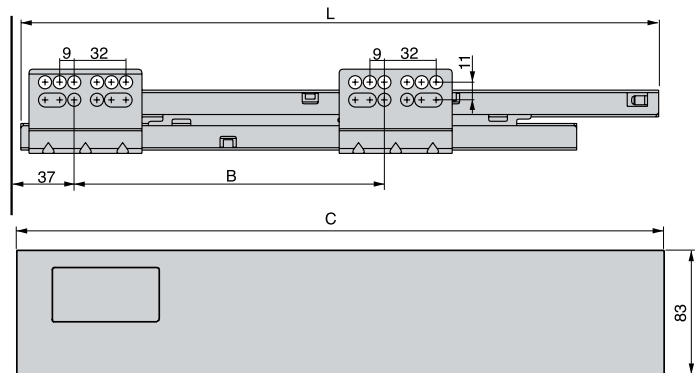
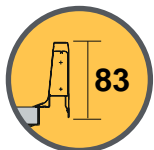
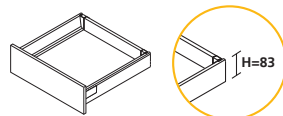


VANTAGE - Q

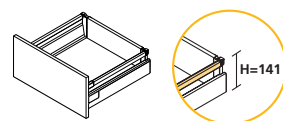


Prof.	L	B	C
270	265	96	267
300	295	128	297
350	345	128	347
400	395	192	397
450	445	224	447
500	495	224	497

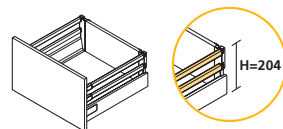
83 mm
 Drawer
 Cassetto
 Cajón
 Tiroir
 Gaveta



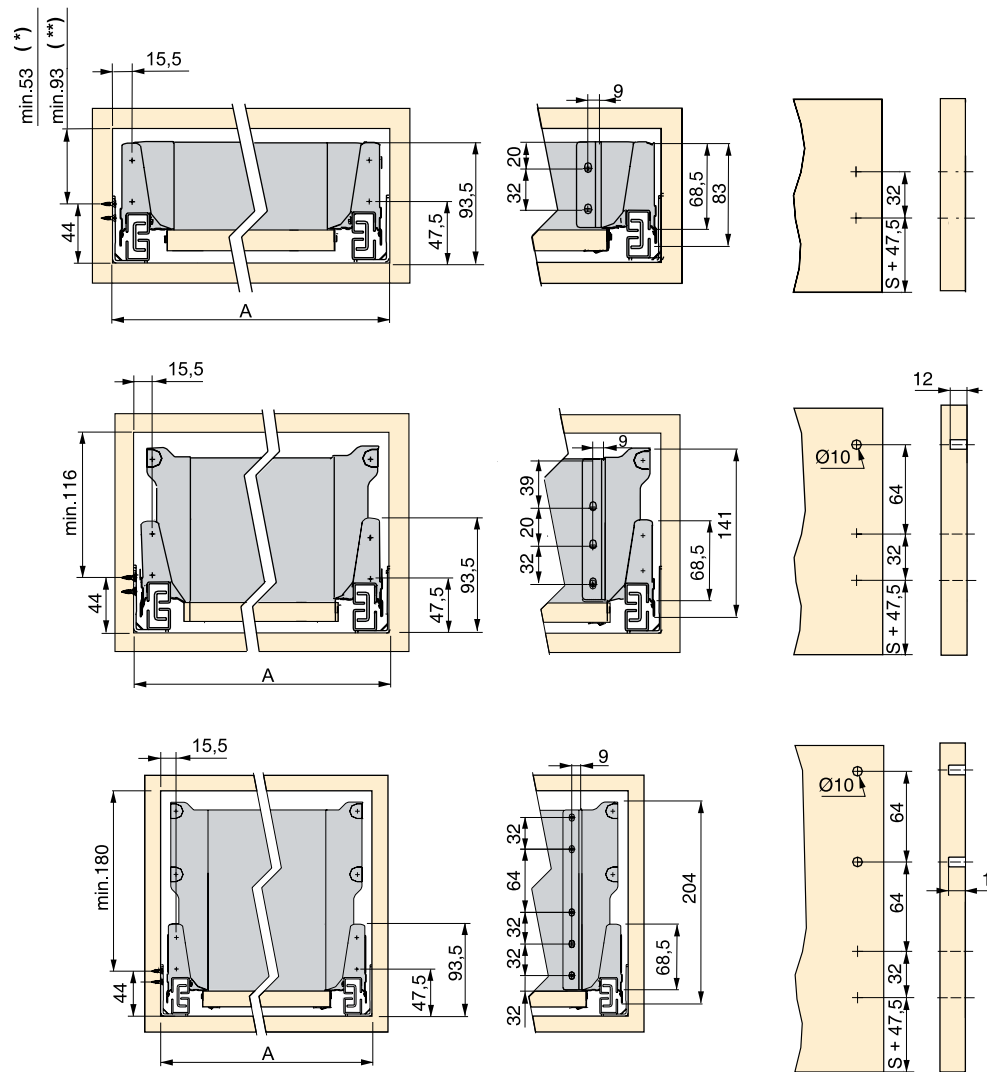
141 mm
 Drawer
 Cassetto
 Cajón
 Tiroir
 Gaveta



204 mm
 Drawer
 Cassetto
 Cajón
 Tiroir
 Gaveta



(*)= outer drawer / cassetto esterno/ cajón exterior/ tiroir extérieur / gaveta exterior
 (**)= inner drawer / cassetto interno / cajón interior / tiroir intérieur / gaveta interior



S = Overlay / Sormonto / Solape / Recouvrement / Sobreposição da ilharga



EMUCA, S.A.
 Valencia (España)
 T. +34 96 166 70 19
 F. +34 96 166 71 82



EMUCA, S.R.L.
 Padova (Italy)
 T. +39 049 8702800
 F. +39 049 8703019



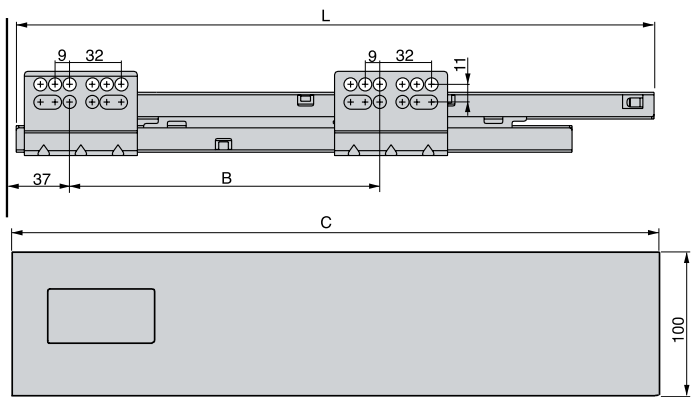
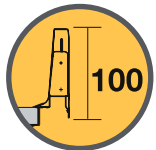
EMUCA, Ltd.
 Chelmsford ESSEX (UK)
 T. +44 1268 530674
 F. +44 1268 828592

EMUCA, S.A.R.L.
 Nantes (France)
 T. +33 2 49 88 07 35
 F. +33 2 72 22 02 24

EMUCA, Lda.
 Lisboa (Portugal)
 T. +351 211 203 940
 F. +34 96 166 71 82

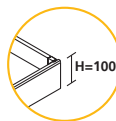
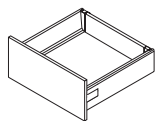
Made in China

VANTAGE - Q

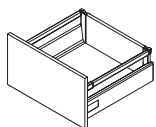


Prof.	L	B	C
350	345	128	347
450	445	224	447
500	495	224	497

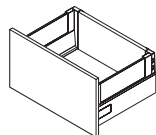
100 mm
 Drawer
 Cassetto
 Cajón
 Tiroir
 Gaveta



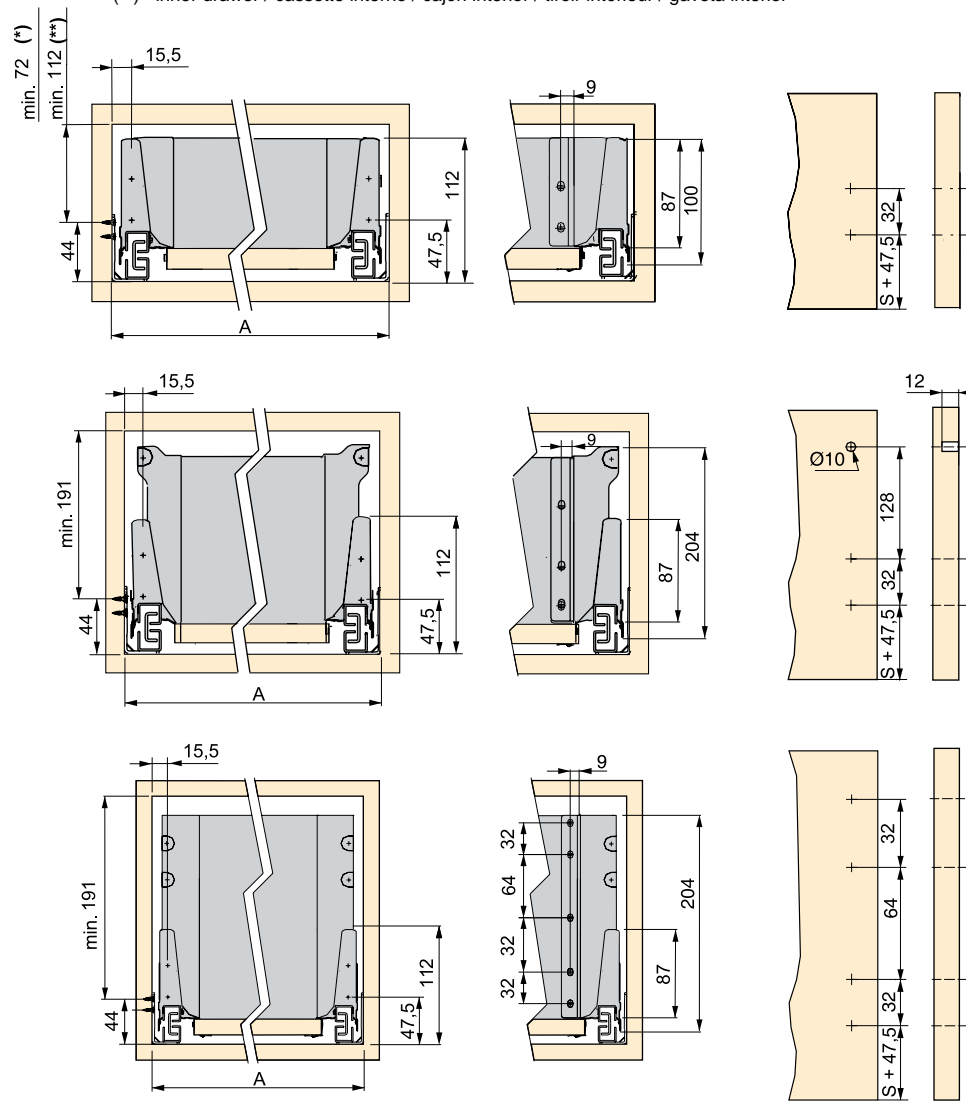
204 mm
 Drawer
 Cassetto
 Cajón
 Tiroir
 Gaveta



204 mm
 Drawer
 Cassetto
 Cajón
 Tiroir
 Gaveta



(*)= outer drawer / cassetto esterno/ cajón exterior/ tiroir extérieur / gaveta exterior
 (**)= inner drawer / cassetto interno / cajón interior / tiroir intérieur / gaveta interior



S = Overlay / Sormonto / Solape / Recouvrement / Sobreposição da ilharga



EMUCA, S.A.
 Valencia (España)
 T. +34 96 166 70 19
 F. +34 96 166 71 82



EMUCA, S.R.L.
 Padova (Italy)
 T. +39 049 8702800
 F. +39 049 8703019



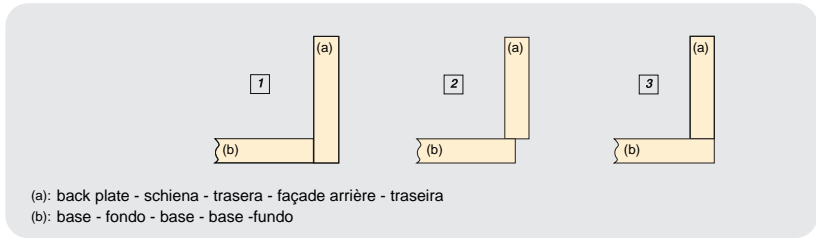
EMUCA, Ltd.
 Chelmsford ESSEX (UK)
 T. +44 1268 530674
 F. +44 1268 828592

EMUCA, S.A.R.L.
 Nantes (France)
 T. +33 2 49 88 07 35
 F. +33 2 72 22 02 24

EMUCA, Lda.
 Lisboa (Portugal)
 T. +351 211 203 940
 F. +34 96 166 71 82

Made in China

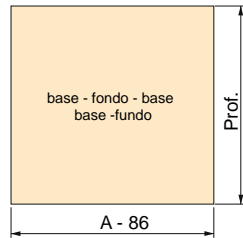
OPTION
OPZIONE
OPCION
OPTION
OPÇÃO



(a): back plate - schiena - trasera - façade arrière - traseira
(b): base - fondo - base - base-fundo

BOTTOM LENGTH - LUNGHEZZA FONDO - LONGITUD FONDO - LONGUEUR DU FOND DE TIROIR - COMPRIMENTO FUNDO

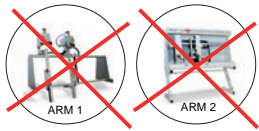
Option - Opzione - Opcion - Option - Opção		
1	2(*)	3(**)
Prof - 24	Prof - 20	Prof - 4



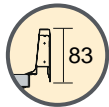
16mm = Board thickness
Spessore pannello
Espesor tablero
Panneau
Espessura do painel

(*)
Option to assembly metal back panel.
Opzione per montaggio di schiena metallica.
Opción para montaje de trasera metálica.
Option pour montage façade arrière métallique.
Opção para montagem de traseira de metal.

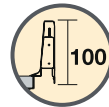
(**) Option 3 / Opzione 3 / Opción 3 / Option 3 / Opção 3:



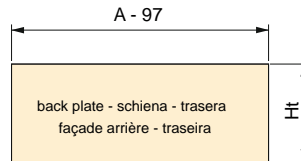
DRAWER PANEL HEIGHT - ALTEZZA SCHIENA - ALTURA TRASERA - HAUTEUR FAÇADE ARRIÈRE - ALTURA TRASEIRA



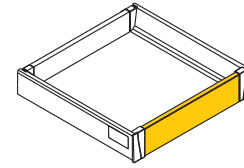
Option - Opzione - Opcion - Option - Opção		
	1	2 - 3
Drawer Cassetto Cajón Tiroir Gaveta	83	84
Ht	141	135
	204	199



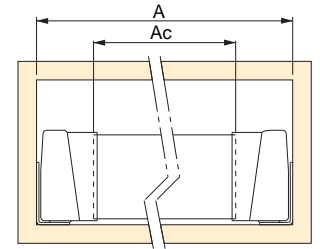
Option - Opzione - Opcion - Option - Opção		
	1	2 - 3
Drawer Cassetto Cajón Tiroir Gaveta	100	102,5
Ht	199	183



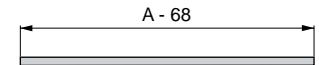
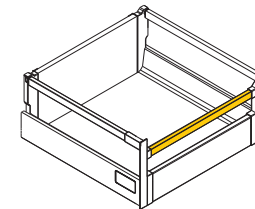
INNER DRAWER
CASSETTO INTERNO
CAJÓN INTERIOR
TIROIR INTÉRIEUR
GAVETA INTERIOR



$$Ac = A - 98$$



FRONTAL RAILING FOR INNER DRAWER
ASTINA FRONTALE PER CASSETTO INTERNO
FRONTAL RAILING FOR INNER DRAWER
BARANDILLA FRONTAL PARA CAJÓN INTERIOR
REHAUSSE FRONTALE POUR TIROIR INTÉRIEUR
CERCO FRONTAL PARA GAVETA INTERIOR



A = Inner module / Interno modulo / Interior módulo / Interieur caisson / Interior de módulo



EMUCA, S.A.
Valencia (España)
T. +34 96 166 70 19
F. +34 96 166 71 82



EMUCA, S.R.L.
Padova (Italy)
T. +39 049 8702800
F. +39 049 8703019

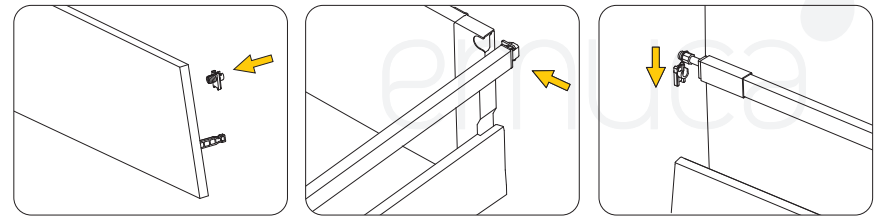
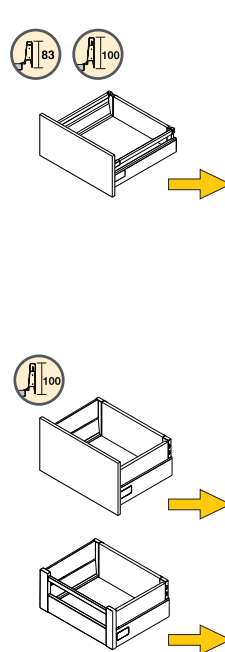
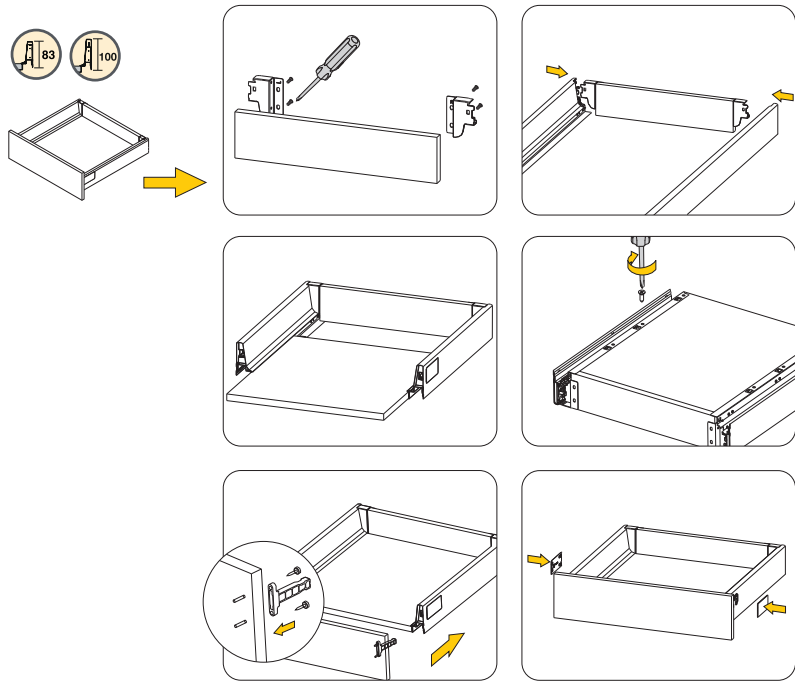


EMUCA, Ltd.
Chelmsford ESSEX (UK)
T. +44 1268 530674
F. +44 1268 828592

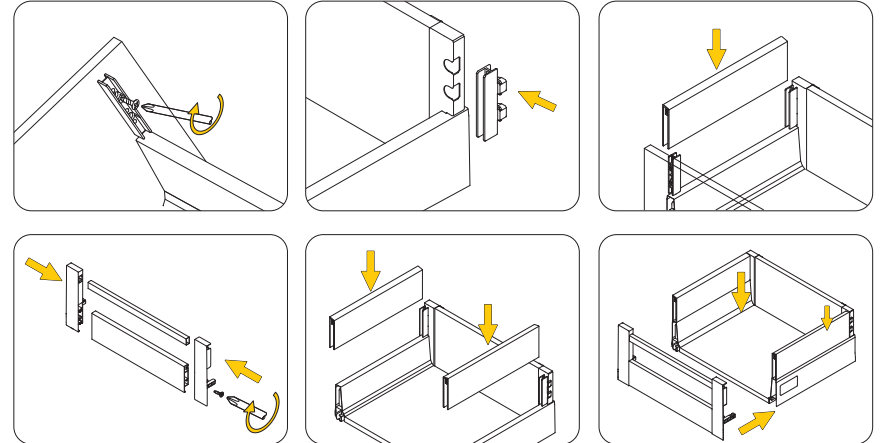
EMUCA, S.A.R.L.
Nantes (France)
T. +33 2 49 88 07 35
F. +33 2 72 22 02 24

EMUCA, Lda.
Lisboa (Portugal)
T. +351 211 203 940
F. +34 96 166 71 82

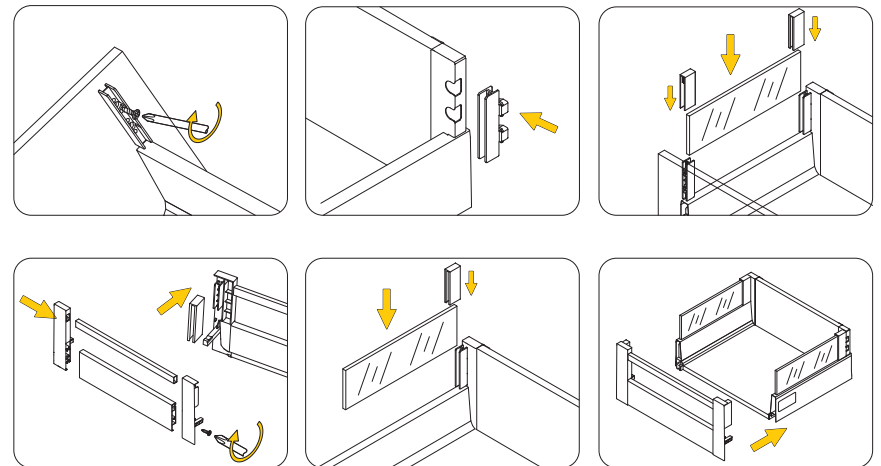
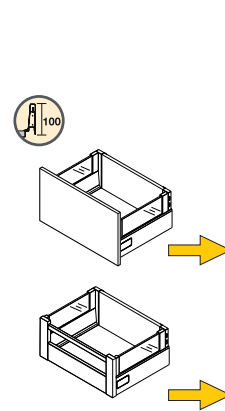
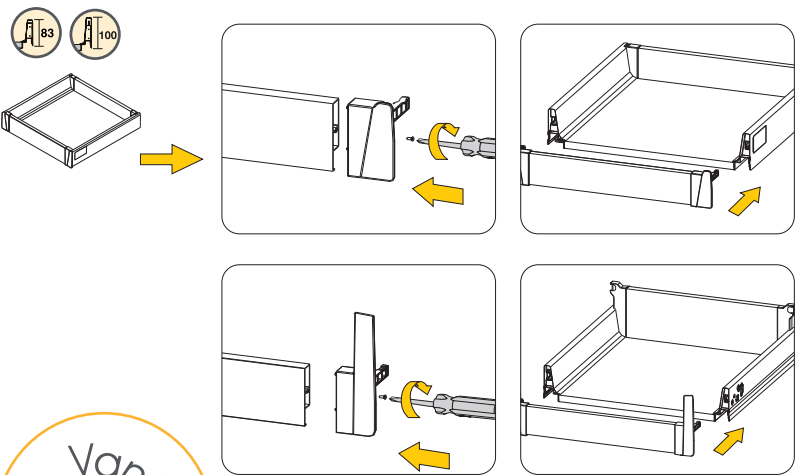
Made in China



H:204
METAL SUPPLEMENTS - SUPPLEMENTI METALLO - LATERAL METÁLICO - LATÉRAL MÉTAL - LATERAL METALICO



H:204
GLASS SUPPLEMENTS - SUPPLEMENTI VETRO - LATERAL CRISTAL - LATÉRAL VERRE - LATERAL VIDRIO



EMUCA, S.A.
Valencia (España)
T. +34 96 166 70 19
F. +34 96 166 71 82



EMUCA, S.R.L.
Padova (Italy)
T. +39 049 8702800
F. +39 049 8703019



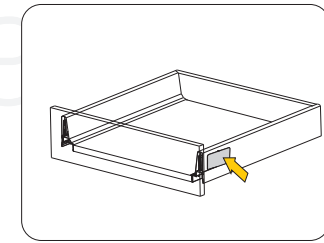
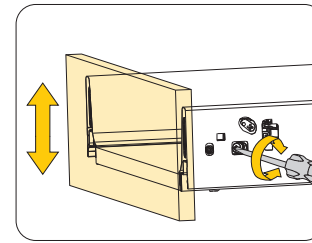
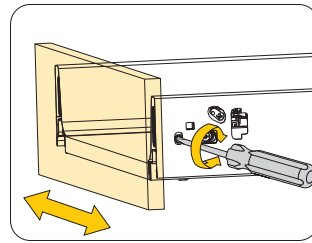
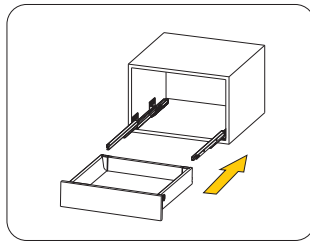
EMUCA, Ltd.
Chelmsford ESSEX (UK)
T. +44 1268 530674
F. +44 1268 828592

EMUCA, S.A.R.L.
Nantes (France)
T. +33 2 49 88 07 35
F. +33 2 72 22 02 24

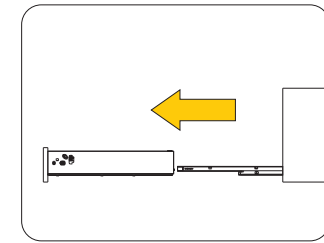
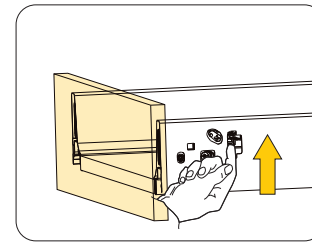
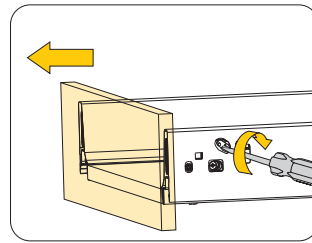
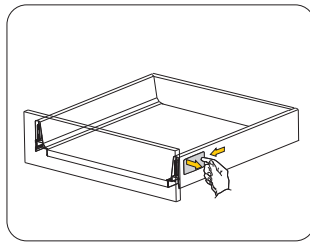
EMUCA, Lda.
Lisboa (Portugal)
T. +351 211 203 940
F. +34 96 166 71 82

Made in China

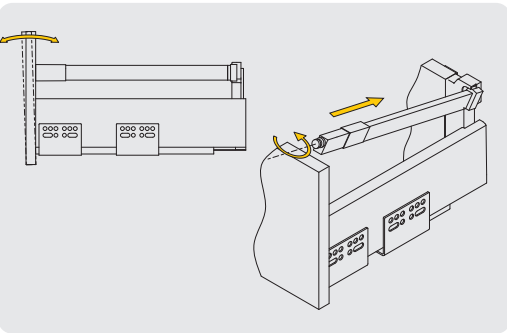
ADJUSTMENT
REGOLAZIONE
REGULACIÓN
RÉGLAGE
REGULAÇÃO



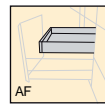
DISMOUTING
SMONTAGGIO
DESMONTAJE
DÉMONTAGE
DESMONTAGEM



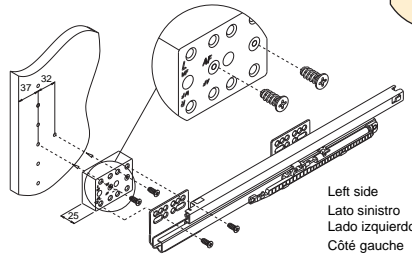
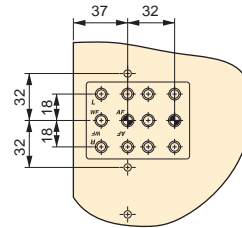
ADJUSTMENT TILT FRONT
REGOLAZIONE DE L'INCLINAZIONE DEL FRONTALE
AJUSTE INCLINACIÓN FRENTE
RÉGLAGE DE LA FAÇADE
REGULAÇÃO FRENTE



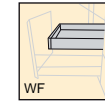
INNER DRAWER - CASSETTO INTERNO - CAJÓN INTERIOR - TIROIR INTÉRIEUR - GAVETA INTERIOR



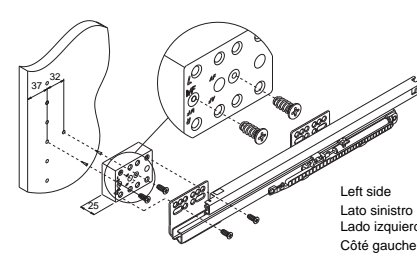
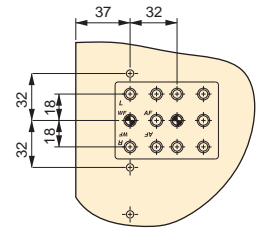
Aluminium front
Frontalini in alluminio
Frente de aluminio
Façade en aluminium
Frente de alumínio



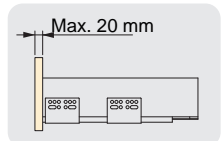
Left side
Lato sinistro
Lado izquierdo
Côté gauche
Lato esquerda



Wood front
Frontalini in legno
Frente de madeira
Façade en bois
Frente de madeira



Left side
Lato sinistro
Lado izquierdo
Côté gauche
Lato esquerda



EMUCA, S.A.
Valencia (España)
T. +34 96 166 70 19
F. +34 96 166 71 82



EMUCA, S.R.L.
Padova (Italy)
T. +39 049 8702800
F. +39 049 8703019



EMUCA, Ltd.
Chelmsford ESSEX (UK)
T. +44 1268 530674
F. +44 1268 828592

EMUCA, S.A.R.L.
Nantes (France)
T. +33 2 49 88 07 35
F. +33 2 72 22 02 24

EMUCA, Lda.
Lisboa (Portugal)
T. +351 211 203 940
F. +34 96 166 71 82

Made in China