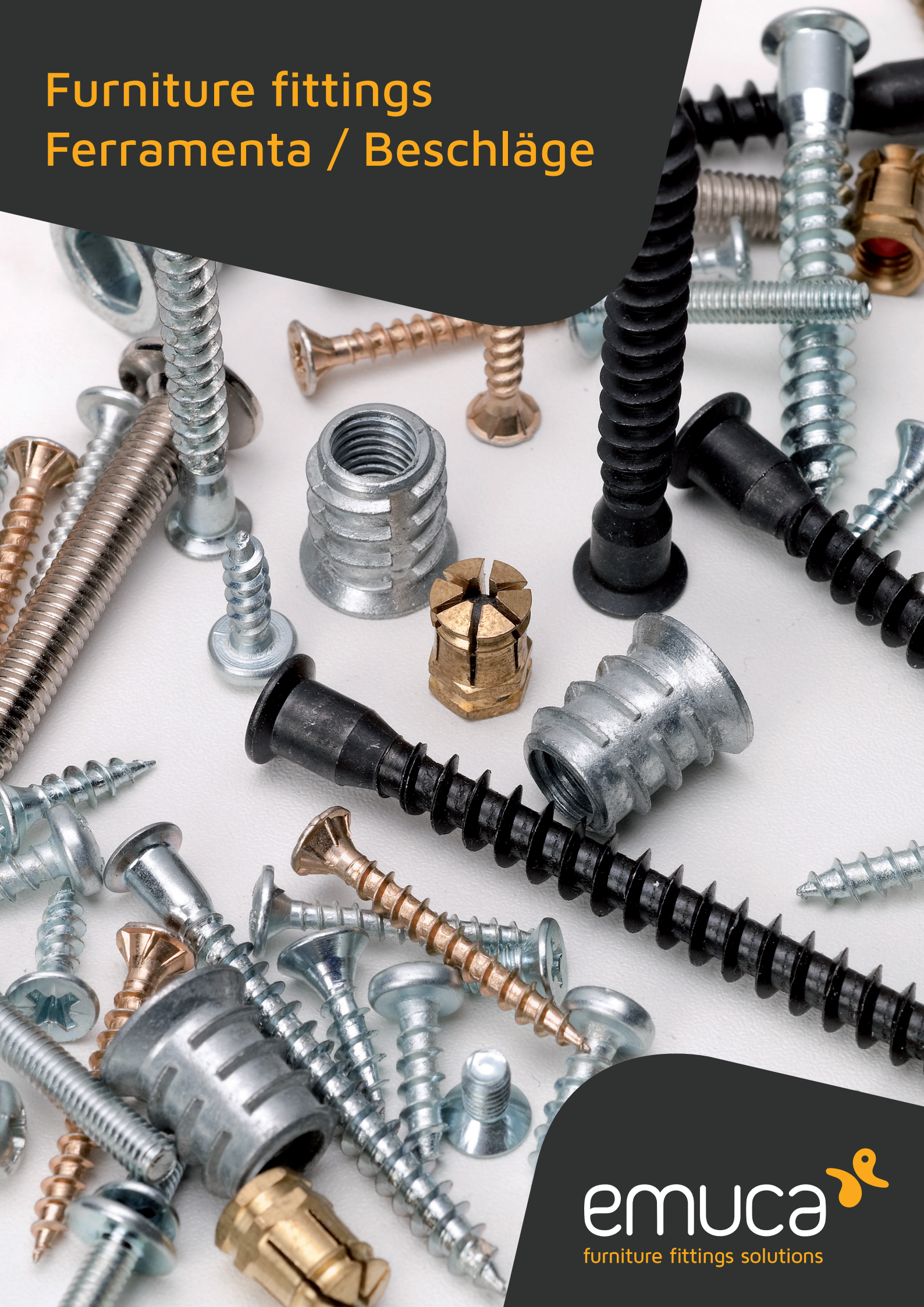


# Furniture fittings Ferramenta / Beschläge





## Hinges and supplements Cerniere e basette / Scharniere und Zusätze

X91 Hinge with soft close, 100° opening, plates for screwing  
Cerniera a scodellino X91, chiusura ammortizzata, basette con regolazione eccentrica per vite  
Topfscharnier X91, sanftes Schließen, Öffnung 100°, Montageplatte zum Schrauben



Size	Cod.		Cod.	
	<b>10133</b>	<b>07</b>	2	<b>10113</b> <b>07</b> 20
	<b>10134</b>	<b>07</b>	2	<b>10114</b> <b>07</b> 20
	<b>10135</b>	<b>07</b>	2	<b>10115</b> <b>07</b> 20

Steel / Acciaio / Stahl

X91 Hinge, soft close, 100° opening, Euro screw  
Cerniera a scodellino X91, chiusura ammortizzata, apertura 100°, basette Euro  
Topfscharnier X91, sanftes Schließen, Öffnung 100°, Montageplatte Euro



Size	Cod.		Cod.	
	<b>10136</b>	<b>07</b>	2	<b>10116</b> <b>07</b> 20
	<b>10137</b>	<b>07</b>	2	<b>10117</b> <b>07</b> 20
	<b>10138</b>	<b>07</b>	2	<b>10118</b> <b>07</b> 20

Steel / Acciaio / Stahl

X91N Hinge, 100° opening, plates for screwing  
Cerniera a scodellino X91N, apertura 100°, basetta a vite  
Topfscharnier X91N, Öffnung 100°, Montageplatte zum Schrauben



Size	Cod.	
	<b>10110</b> <b>07</b>	20
	<b>10111</b> <b>07</b>	20
	<b>10112</b> <b>07</b>	20

Steel / Acciaio / Stahl

X91N Hinge, 100° opening, with Euro screw  
Cerniera a scodellino X91N, apertura 100°, basette Euro  
Topfscharnier X91N, Öffnung 100°, Montageplatte Euro



Size	Cod.	
	<b>10124</b> <b>07</b>	20
	<b>10125</b> <b>07</b>	20
	<b>10126</b> <b>07</b>	20

Steel / Acciaio / Stahl

X91 Hinge, soft close, 90° angular arm, plates for screwing

Cerniera a scodellino X91, chiusura ammortizzata, braccio angolare 90°, basetta a vite  
Topfscharnier X91, sanftes Schließen, Winkelarm 90°, Montageplatte zum Schrauben



Angle	Cod.		
90°	10146	07	2
90°	10120	07	10

Steel / Acciaio / Stahl



X91 Hinge, soft close, 90° angular arm, Euro screw

Cerniera a scodellino X91, chiusura ammortizzata, braccio angolare 90°, basetta Euro  
Topfscharnier X91, sanftes Schließen, Winkelarm 90°, Montageplatte Euro



Angle	Cod.		
90°	10148	07	2
90°	10123	07	10

Steel / Acciaio / Stahl



X91 Hinge, soft close, 45° angular arm, plates for screwing

Cerniera a scodellino X91, chiusura ammortizzata, braccio angolare 45°, basetta a vite  
Topfscharnier X91, sanftes Schließen, Winkelarm 45°, Montageplatte zum Schrauben



Angle	Cod.		
45°	10145	07	2
45°	10119	07	10

Steel / Acciaio / Stahl



X91 Hinge, soft close, 45° angular arm, Euro screw

Cerniera a scodellino X91, chiusura ammortizzata, braccio angolare 45°, basetta Euro  
Topfscharnier X91, sanftes Schließen, Winkelarm 45°, Montageplatte Euro



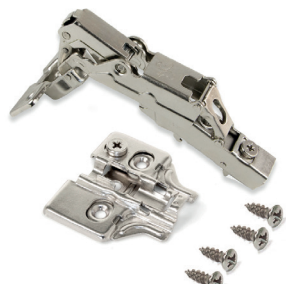
Angle	Cod.		
45°	10147	07	2
45°	10122	07	10

Steel / Acciaio / Stahl



X91 Hinge, soft close, 165° opening, plates for screwing

Cerniera a scodellino X91, chiusura ammortizzata, apertura 165°, basetta a vite  
Topfscharnier X91, sanftes Schließen, Öffnung 165°, Montageplatte zum Schrauben



Size	Cod.			Cod.		
	10149	07	2	10127	07	20
	10150	07	2	10128	07	20
	10151	07	2	10129	07	20

Steel / Acciaio / Stahl

X91 Hinge, soft close, 165° opening, Euro screw

Cerniera a scodellino X91, chiusura ammortizzata, apertura 165°, basetta Euro  
Topfscharnier X91, sanftes Schließen, Öffnung 165°, Montageplatte Euro



Size	Cod.			Cod.		
	10152	07	2	10130	07	20
	10153	07	2	10131	07	20
	10154	07	2	10132	07	20

Steel / Acciaio / Stahl

X95 Hinge, 110° opening and plates for screwing  
 Cerniera X95, apertura 110° e basette a vite  
 Topfscharnier X95, Öffnung 110°, Montageplatte zum Schrauben



Size	Cod.	
	<b>10174 07</b>	20
	<b>10175 07</b>	20
	<b>10176 07</b>	20

Steel / Acciaio / Stahl

X95 Hinge, 110° opening and Euro screws  
 Cerniera X95 con apertura 110° e basetta Euro  
 Topfscharnier X95, Öffnung 110°, Montageplatte Euro



Size	Cod.	
	<b>10177 07</b>	20
	<b>10178 07</b>	20
	<b>10179 07</b>	20

Steel / Acciaio / Stahl

C50 Hinge, 105° opening and plates for screwing  
 Cerniera C50 apertura 105° e basetta a vite  
 Topfscharnier C50, Öffnung 105°, Montageplatte zum Schrauben



Size	Cod.		Cod.	
	<b>10187 07</b>	2	<b>10186 07</b>	20

Steel / Acciaio / Stahl

X10 Hinge, 95° opening, plates for screwing  
 Cerniera a scodellino X10, apertura 95°, basette a vite  
 Topfscharnier X10, Öffnung 95°, Montageplatte zum Schrauben



Size	Cod.	
	<b>10161 07</b>	20
	<b>10162 07</b>	20
	<b>10163 07</b>	20

Steel / Acciaio / Stahl

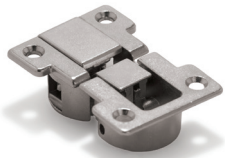
X 10 Hinge, 95° opening, Euro screw  
 Cerniera a scodellino X10, apertura 95°, basette Euro  
 Topfscharnier X10, Öffnung 95°, Montageplatte Euro





Size	Cod.	
	<b>10164 07</b>	20
	<b>10165 07</b>	20
	<b>10166 07</b>	20

Steel / Acciaio / Stahl

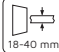

Hinge Ankor  
Cerniera Ankor  
Topfscharnier Ankor



Cod.  



10188	07	2
-------	----	---

Zamak / Zama / Zamak

Hinge Secreter  
Cerniera Secreter  
Topfscharnier Secreter





Cod.  

10189	07	2
-------	----	---

Zamak / Zama / Zamak

Batch hinges for glass door, inner edge  
Cerniera per anta in vetro, lato interno  
Glastürscharnier-Set, Innenkante





Cod.  

10158	11	64	1
-------	----	----	---

Zamak / Zama / Zamak

Batch hinges for glass door, central part  
Cerniera per anta in vetro, ubicazione centrale  
Glastürscharnier-Set, Mitte





Cod.  

10159	11	64	1
-------	----	----	---

Zamak / Zama / Zamak

Batch Interior hinge with cover for glass doors  
Cerniera interiore per porta in vetro  
Glastürscharnier-Set, Innenseite



Cod.  



10160	25	1
-------	----	---

Steel / Acciaio / Stahl

## Locks and latches Serrature e chiusure / Schlösser und Verschlüsse

Cylinder lock for drawer  
Serratura per cassetto  
Zylinderschloss für Schublade





Cod.  

20312	11	1
-------	----	---

Zamak / Zama / Zamak

Cylinder lock for glass door  
Serratura a cilindro per anta in vetro  
Zylinderschloss für Glastür





Cod.  

20310	11	1
-------	----	---

Zamak / Zama / Zamak

Cylinder lock for glass door  
Serratura a cilindro per anta in vetro  
Zylinderschloss für Glastür





Cod.  

20311	11	1
-------	----	---

Zamak / Zama / Zamak

Revalock magnetic safety lock for doors and drawers  
Chiusura magnetica di sicurezza per mobile Revalock  
Magnetischer Sicherheitsverschluss für Möbel Revalock



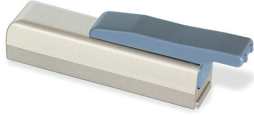
Cod.  

89329	20	1
-------	----	---

Plastic / Tecnoplastica / Kunststoff



Mildy shock absorber piston for hinged doors  
 Pistone ammortizzatore per ante Mildy  
 Türdämpfer für Scharnertüren Mildy



Cod.		
12759	24	10
Plastic / Tecnoplastica / Kunststoff		

Minidamp 2 Shock absorber pistons for hinged door  
 Pistone per porta a battente Minidamp 2  
 Türdämpfer für Scharnertüren Minidamp 2



Cod.		
12750	21	10
Plastic / Tecnoplastica / Kunststoff		

Push Latch Latches for doors  
 Chiusura push per mobile Push Latch  
 Verschluss für Türen Push Latch



Cod.		
12779	21	10
Plastic / Tecnoplastica / Kunststoff		

Push Latch magnetic closing for doors  
 Chiusura magnetica per ante Push Latch  
 Magnetverschluss für Türen Push Latch



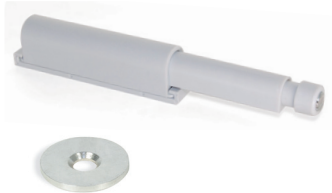
Cod.		
12778	21	10
Steel and plastic / Acciaio e tecnoplastica / Stahl und Kunststoff		

Push Latch Latches for doors  
 Chiusura push per mobile Push Latch  
 Verschluss für Türen Push Latch



Cod.		
12752	21	10
Plastic / Tecnoplastica / Kunststoff		

Push Latch magnetic closing for doors  
 Chiusura magnetica per ante Push Latch  
 Magnetverschluss für Türen Push Latch



Cod.		
12780	21	10
Steel and plastic / Acciaio e tecnoplastica / Stahl und Kunststoff		

Pushmatic Latches for doors  
 Chiusura push per mobile Pushmatic  
 Verschluss für Türen Pushmatic



Cod.		
12777	21	10
Plastic / Tecnoplastica / Kunststoff		

Magnetic closing for doors  
 Chiusura magnetica per ante  
 Magnetverschluss für Türen



Cod.		
12753	15	20
Steel and plastic / Acciaio e tecnoplastica / Stahl und Kunststoff		

Push Latch Latches for doors  
Chiusura push per mobile Push Latch  
Verschluss für Türen Push Latch



Cod.				
12781	21	23	10	
Plastic / Tecnoplastica / Kunststoff				

Push Latch magnetic closing for doors  
Chiusura magnetica per ante Push Latch  
Magnetverschluss für Türen Push Latch



Cod.				
12782	21	23	10	
Steel and plastic / Acciaio e tecnoplastica / Stahl und Kunststoff				

Push Latch Latches for doors  
Chiusura push per mobile Push Latch  
Verschluss für Türen Push Latch



Cod.				
12783	21	23	10	
Plastic / Tecnoplastica / Kunststoff				

Push Latch magnetic closing for doors  
Chiusura magnetica per ante Push Latch  
Magnetverschluss für Türen Push Latch



Cod.				
12784	21	23	10	
Steel and plastic / Acciaio e tecnoplastica / Stahl und Kunststoff				

Push Latch Latches for doors  
Chiusura push per mobile Push Latch  
Verschluss für Türen Push Latch

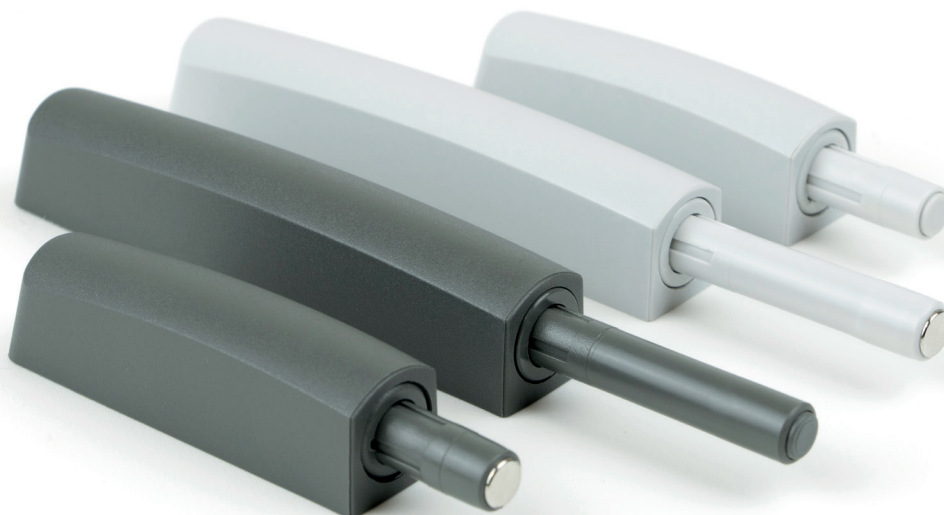


Cod.				
12785	21	23	10	
Plastic / Tecnoplastica / Kunststoff				

Push Latch magnetic closing for doors  
Chiusura magnetica per ante Push Latch  
Magnetverschluss für Türen Push Latch



Cod.				
12786	21	23	10	
Steel and plastic / Acciaio e tecnoplastica / Stahl und Kunststoff				





Fast Latch lock for furniture  
Chiusura a cricchetto per mobile  
Türschnäpper Fast Latch für Möbel



Cod.		
12788	15	4
12754	15	10

Steel and plastic / Acciaio e tecnoplastica / Stahl und Kunststoff

Silent latch for furniture  
Chiusura a battente silenziosa per mobile  
Leiser Türschnäpper für Möbel



Cod.		
12755	05	10

Steel and plastic / Acciaio e tecnoplastica / Stahl und Kunststoff

Fastener lever locks for furniture  
Chiusura a leva per mobile  
Hebelverschluss Spanner für Möbel



Cod.		
10155	05	10

Steel / Acciaio / Stahl

Fast Latch lock for furniture  
Chiusura a cricchetto per mobile  
Türschnäpper Tip Latch für Möbel



Cod.		
12787	05	10

Steel and plastic / Acciaio e tecnoplastica / Stahl und Kunststoff

## Hangers for high units Appendiabiti per moduli alti / Aufhänger für hohe Module

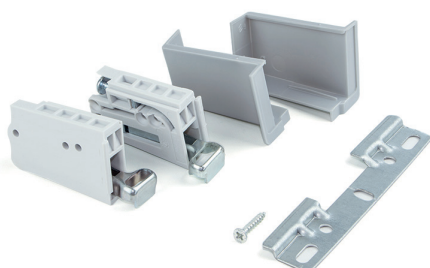
Levelup hidden wardrobe hangers with plate  
Reggipensile a scomparsa per anta di armadio Levelup con piastrina  
träger für hohe Module Levelup mit Flacheisen



Cod.		
40086	05	1

Steel / Acciaio / Stahl

Hook hanger for high units  
Reggipensile per moduli alti Hook  
Aufhänger für hohe Module Hook



Cod.		
40267	21	1

Steel and plastic / Acciaio e tecnoplastica / Stahl und Kunststoff



## Eccentrics and hooks Eccentrici e agganci / Exzenter und Haken

Luna Joining clamp for shelf supports, D. 20, 13 mm  
Giunzione per mensola Luna, D. 20, 13 mm  
Tablarverbinder für Regale Luna, D. 20 mm, 13 mm



bolt Ø x L	Cod.			
4,2 x 11	<b>40225</b>	<b>15</b>	<b>16</b>	20
6 x 9	<b>40226</b>	<b>15</b>	<b>16</b>	20

Steel and plastic / Acciaio e tecnoplastica /  
Stahl und Kunststoff

T15 cams and dowels kit with Fit bolts and caps  
Kit di eccentrici T15 con perni Fit e coperture  
Verbindergehäuse-Kit T15 mit Bolzen Fit und Abdeckungen



	Cod.			
13	<b>40268</b>	<b>15</b>		20
16	<b>40269</b>	<b>15</b>		20
19	<b>40270</b>	<b>15</b>		20

Steel, plastic and zamak / Acciaio,  
tecnoplasticae e zama / Stahl,  
Kunststoff und zamak

T15 Cams and dowels kit with bolts, D. 6 mm  
Kit di eccentrici T15 con perni D. 6 mm  
Verbindergehäuse-Kit T15 mit Bolzen D. 6 mm



	Cod.			
13	<b>40200</b>	<b>15</b>		20
16	<b>40202</b>	<b>15</b>		20
19	<b>40204</b>	<b>15</b>		20

Steel, plastic and zamak / Acciaio,  
tecnoplasticae e zama / Stahl,  
Kunststoff und zamak

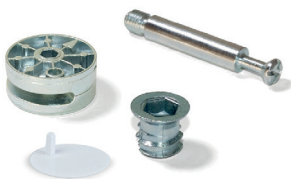
T15 Cams and dowels kit with bolts and M6 bolt  
Kit di eccentrici T15 con perni e bussole  
Verbindergehäuse-Kit T15 mit Bolzen und Muttern M6



	Cod.			
13	<b>40201</b>	<b>15</b>		20
16	<b>40203</b>	<b>15</b>		20
19	<b>40205</b>	<b>15</b>		20

Steel, plastic and zamak / Acciaio,  
tecnoplasticae e zama / Stahl,  
Kunststoff und zamak

Cams and dowels kit and bolt M8  
Kit eccentrici Big con bussole e perni M8  
Verbindergehäuse-Kit Big mit Bolzen und Muttern M8



Ø	Cod.			
35	<b>40206</b>	<b>15</b>		10

Steel, plastic and zamak / Acciaio,  
tecnoplasticae e zama / Stahl,  
Kunststoff und zamak

Concealed hinge joining system kit, D. 35 mm and M8 bolts  
Kit aggancio di unione D. 35 mm, e bussola M8  
Tablarverbinder-Kit D. 35 mm und Muttern M8



Ø	Cod.			
35	<b>40207</b>	<b>01</b>		10

Steel, plastic and zamak / Acciaio,  
tecnoplasticae e zama / Stahl,  
Kunststoff und zamak

Fix concealed hinge joining system D. 20 x 12.5 mm and D. 6 mm bolts  
Kit scodellino di unione Fix D. 20 x 12,5 mm e perni D. 6 mm  
Haken für die Befestigung von Regalen Fix D. 20 x 12.5 mm und Bolzen D. 6 mm



bolt Ø x L	Cod.			
6 x 8	<b>40272</b>	<b>07</b>		20
6 x 11	<b>40273</b>	<b>07</b>		20

Steel, plastic and zamak / Acciaio,  
tecnoplasticae e zama / Stahl,  
Kunststoff und zamak

Block System hooks for fastening shelves H 12 mm  
Agganci per fissaggio di mensola Block System H 12 mm  
Haken für die Befestigung von Regalen Block System H. 12 mm



H	Cod.			
12	<b>40271</b>	<b>15</b>		100

Plastic / Tecnoplastica / Kunststoff

Felt pads for furniture  
 Feltrini adesivi per mobile  
 Selbstklebende Möbelgleiter aus Filz

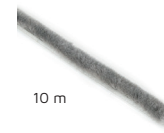
Emuca self-adhesive dust excluder for doors and windows  
 Guarnizione a spazzola antipolvere autoadesiva Emuca per ante e finestre  
 Selbstklebender Abdichtungstreifen mit Bürste für Türen und Fenster



Un.	Size	Cod.	16	21	Un.	Size	Cod.	16	21
150	Ø 16	20380	16	1	1.500	Ø 16	20211	16	10
150	Ø 20	20381	16	1	1.500	Ø 20	20212	16	10
108	Ø 24	20382	16	1	1.080	Ø 24	20213	16	10
63	Ø 30	20383	16	1	630	Ø 30	20214	16	10
36	Ø 34	20384	16	1	360	Ø 34	20215	16	10
36	Ø 40	20385	16	1	360	Ø 40	20216	16	10
150	20 x 20	20386	16	1	1.500	20 x 20	20217	16	10
96	25 x 25	20387	16	1	960	25 x 25	20218	16	10
63	30 x 30	20388	16	1	630	30 x 30	20219	16	10
3	100 x 250	20389	16	1	30	100 x 250	20220	16	10

Fibre / Fibra / Faser

Fibre / Fibra / Faser



10 m

H	Cod.	16	21
7	70893	21	1
9	70894	21	1
17	70895	21	1

Plastic / Tecnoplastica / Kunststoff



**Drawer slides**  
**Guide per cassetti / Schubladenführungen**

Set of Slippe Concealed drawer runners, soft closing, total extraction with hook  
 Guide a scomparsa per cassetti Slippe, a rotelle, a chiusura soft, estrazione totale e aggancio  
 Satz versteckte Führungen Slippe für Schublade, Rollschub, sanftes Schließen, Vollauszug, zum Einhängen

Set of Slippe concealed drawer runners, soft closing, total extraction  
 Guide a scomparsa per cassetti Slippe, a rotelle, a chiusura soft, estrazione totale  
 Satz versteckte Führungen Slippe für Schublade, Rollschub, sanftes Schließen, Vollauszug



Depth	Cod.	05	16
290	40026	05	1
340	40027	05	1
390	40028	05	1
440	40029	05	1
490	40030	05	1
540	40084	05	1
590	40085	05	1

Steel / Acciaio / Stahl



Depth	Cod.	05	16
240	40081	05	1
290	41041	05	1
340	41042	05	1
390	41043	05	1
440	41044	05	1
490	41045	05	1
540	40082	05	1
590	40083	05	1

Steel / Acciaio / Stahl



Set of Slippe concealed drawer runners, total extraction, push system  
 Guide a scomparsa per cassetti Slippe, a rotelle, chiusura soft, estrazione totale, sistema push  
 Satz versteckter Führungen Slippe für Schubladen, Rollschub, Vollauszug, Push-System

Set of Slippe concealed drawer runners, partial extraction, push system  
 Guide a scomparsa per cassetti Slippe, a rotelle, chiusura soft, estrazione parziale, sistema push  
 Satz versteckte Führungen Slippe für Schubladen, Rollschub, Teilauszug, Push-System



Depth	Cod.	05	16
240	30020	05	1
290	30021	05	1
340	30022	05	1
390	30023	05	1
440	30024	05	1
490	30025	05	1

Steel / Acciaio / Stahl



Depth	Cod.	05	16
240	41030	05	1
290	41031	05	1
340	41032	05	1
390	41033	05	1
440	41034	05	1
490	41035	05	1

Steel / Acciaio / Stahl



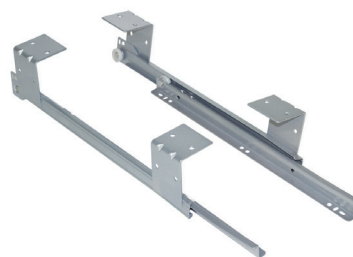
Set of Silver concealed drawer runners, soft close, partial extraction  
 Guida a scomparsa per cassetti Silver, a rotelle, chiusura soft, estrazione parziale  
 Satz versteckte Führungen für Schubladen Silver, Rollschub, sanftes Schließen, Teilauszug



Depth	Cod.			
240	30190	05	05	1
290	30191	05	05	1
340	30192	05	05	1
390	30193	05	05	1
440	30194	05	05	1
490	30195	05	05	1

Steel / Acciaio / Stahl

Set of ball bearing keyboard runners in steel  
 Guida portatastiera a rotelle in acciaio  
 Satz Rollenführungen für Tastatur, Stahl



Cod.			
30260	25	05	1

Steel / Acciaio / Stahl

Set of ball bearing drawer runner T30 with partial extraction  
 Guide per cassetti, a rotelle, ad estrazione parziale T30  
 Satz Führungen für Schubladen, Rollschub, nach unten schließend, mit Teilauszug T30



L	Cod.			
500	43890	12	14 25	1
550	43891	12	14 25	1
600	43892	12	14 25	1
800	43893	12	14 25	1
250	30196	12	14 25	5
300	30076	12	14 25	5
350	30077	12	14 25	5
400	30078	12	14 25	5
450	30079	12	14 25	5
500	30080	12	14 25	5
550	30197	12	14 25	5
600	30198	12	14 25	5
800	30199	12	14 25	5

Steel / Acciaio / Stahl

Soft closing system for drawer with T30 ball bearing runners  
 Meccanismo di chiusura soft per cassetti con guide a rotelle T30  
 Dämpfungssystem für Schubladen mit Rollschubführungen T30



L	Cod.		
250 - 300	30429	21	2
350 - 800	30430	21	2

Plastic / Tecnoplastica / Kunststoff



Set of ball bearing drawer runner, total extraction, soft close, 45 mm  
 Guide per cassetti, a sfera, chiusura soft, estrazione totale, 45 mm  
 Satz Führungen für Schublade, Kugelauszug, Vollauszug, sanftes Schließen, 45 mm



L	Cod.			
300	43015	05	05	1
350	43016	05	05	1
400	43017	05	05	1
450	43018	05	05	1
500	43019	05	05	1
550	43020	05	05	1
600	43021	05	05	1
650	43022	05	05	1

Steel / Acciaio / Stahl

Set of ball bearing drawer runner, total extraction, 45 mm, with brackets  
 Guide per cassetti, a sfera, estrazione totale, 45 mm, con squadra  
 Satz Führungen für Schubladen, Kugelauszug, Vollauszug, 45 mm, mit Winkeln



L	Cod.		
300	43004	05	1
350	43005	05	1
400	43006	05	1
450	43007	05	1
500	43008	05	1
600	43009	05	1

Steel / Acciaio / Stahl

Set of ball bearing runners with total extraction, height 45 mm  
 Guide per cassetti, a sfera, ad estrazione totale, 45 mm  
 Satz Führungen für Schubladen, Kugelvollauszug, 45 mm



L	Cod.			
250	42240	05		1
300	41771	05		1
350	41772	05		1
400	41773	05		1
450	41774	05		1
500	41775	05		1
600	41776	05		1
650	41777	05		1
250	30431	05		5
300	30432	05		5
350	30433	05		5
400	30434	05		5
450	30435	05		5
500	30436	05		5
600	30437	05		5
650	30438	05		5

Steel / Acciaio / Stahl

Set of ball bearing drawer runner with partial extraction, 17 mm  
 Guide per cassetti, a sfera, ad estrazione parziale, 17 mm  
 Satz Führungen für Schubladen, Kugelteilauszug, 17 mm



L	Cod.			
182	30095	05		5
214	30096	05		5
246	30097	05		5
278	30098	05		5
310	30099	05		5
342	30100	05		5
374	30092	05		5
438	30093	05		5

Steel / Acciaio / Stahl

## Legs, feet and levellers Gambe, piedini e registrabili / Beine, Füße und Nivellierer

Adjustable table legs, D. 80 mm, Steel  
 Gambe per tavolo, D. 80 mm, Acciaio  
 Tischbein, D. 80 mm, Stahl



L	Cod.				
710	30481	11	25	51	1
870	30482	11	25	51	1
1.100	30483	11	25	51	1

Steel / Acciaio / Stahl

Adjustable legs with wheel and brake D. 60 mm  
 Gambe regolabili con rotella e freno D. 60 mm  
 Tischbein verstellbar mit Rolle und Bremse D. 60 mm



Cod.			
30616	25		1

Steel / Acciaio / Stahl

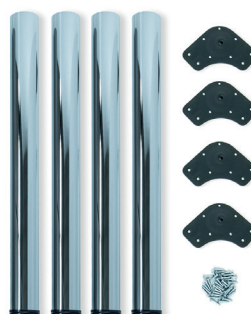
Adjustable table legs, D. 60 mm, Steel  
 Gambe per tavolo, D. 60 mm, Acciaio  
 Tischbein, D. 60 mm, Stahl



L	Cod.					
870	30480	11	14	25	51	1

Steel / Acciaio / Stahl

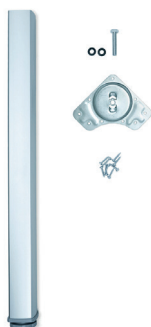
Adjustable table legs, D. 60 mm, Steel  
 Gambe per tavolo, D. 60 mm, Acciaio  
 Tischbeine, D. 60 mm, Stahl



L	Cod.						
710	20345	11	12	14	25	51	4
830	20342	11	-	-	25	51	4

Steel / Acciaio / Stahl

Adjustable table leg Fitwid  
 Gambe regolabili per tavolo Fitwid  
 Tischbein Fitwid, höhenverstellbar



L	Cod.		
710	32456	62	1
830	32458	62	1

Aluminium / Alluminio / Aluminium

Adjustable table legs, D. 80 mm, Aluminium  
 Gambe per tavolo, D. 80 mm, Alluminio  
 Tischbein höhenverstellbar, D. 80 mm, Aluminium



Ø	L	Cod.		
80	710	31124	62	1
80	830	31125	62	1
80	870	31217	62	1

Aluminium / Alluminio / Aluminium

Conus table leg, D. 60 mm, Steel  
 Gambe per tavolo Conus D. 60 mm in acciaio  
 Tischbein Conus D. 60 mm aus Stahl



Cod.		
30689	25	1

Steel and plastic /  
 Acciaio e tecnoplastica  
 / Stahl und Kunststoff



Adjustable feet Bone for furniture  
Piedino regolabile per mobile  
Nivellierfuß Bone für Möbel



H	Cod.			
100	<b>39995</b>	<b>17</b>		1
120	<b>39990</b>	<b>17</b>		1
150	<b>39994</b>	<b>17</b>		1
100	<b>20324</b>	<b>17</b>		10
120	<b>20325</b>	<b>17</b>		10
150	<b>20326</b>	<b>17</b>		10

Plastic / Tecnoplastica / Kunststoff

Adjustable feet Bone for furniture  
Piedino regolabile per mobile  
Nivellierfuß Bone für Möbel



H	Cod.			
100	<b>20224</b>	<b>17</b>		1
120	<b>20225</b>	<b>17</b>		1
150	<b>20226</b>	<b>17</b>		1

Plastic / Tecnoplastica / Kunststoff

Kit Adjustable feet for furniture Prisma  
Piedino regolabile per mobile Prisma  
Nivellierfuß für Möbel Prisma



H	Cod.			
90	<b>20317</b>	<b>62</b>		4
130	<b>20318</b>	<b>62</b>		4
150	<b>20319</b>	<b>62</b>		4

Aluminium and zamak / Alluminio e zama / Aluminium und zamak

Adjustable feet for furniture, D. 40 mm, Aluminium  
Piedino livellatore per mobile D. 40 mm, Alluminio  
Nivellierfuß für Möbel, D. 40 mm, Aluminium



H	Cod.			
140	<b>20343</b>	<b>63</b>		4
160	<b>20344</b>	<b>63</b>		4

Steel and plastic / Acciaio e tecnoplastica / Stahl und Kunststoff

Furniture feet Smartfeet  
Piedino per mobile Smartfeet  
Möbelfuß Smartfeet



H	Cod.				
100 - 110	<b>20233</b>	<b>11</b>	<b>12</b>	<b>14</b>	4
140 - 150	<b>20234</b>	<b>11</b>	<b>12</b>	<b>14</b>	4

Plastic / Tecnoplastica / Kunststoff

Furniture feet Smartfeet  
Piedino per mobile Smartfeet  
Möbelfuß Smartfeet



H	Cod.				
100 - 110	<b>20235</b>	<b>11</b>	<b>12</b>	<b>14</b>	2
140 - 150	<b>20236</b>	<b>11</b>	<b>12</b>	<b>14</b>	2

Plastic / Tecnoplastica / Kunststoff

Furniture feet Alumix 1  
Piedino per mobile Alumix 1  
Möbelfuß Alumix1



H	Cod.			
80	<b>20396</b>	<b>25</b>		4
100	<b>20397</b>	<b>25</b>		4
120	<b>20398</b>	<b>25</b>		4

Plastic / Tecnoplastica / Kunststoff

Furniture feet Alumix 8  
Piedino per mobile Alumix 8  
Möbelfuß Alumix8



H	Cod.			
12	<b>31188</b>	<b>25</b>		4
24	<b>31189</b>	<b>25</b>		4
12	<b>20394</b>	<b>25</b>		20
24	<b>20395</b>	<b>25</b>		20

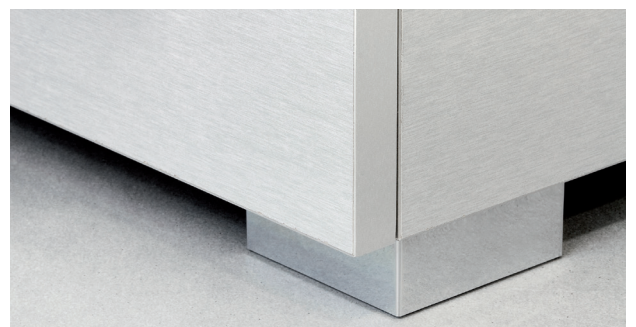
Plastic / Tecnoplastica / Kunststoff

Furniture feet Alumix 7  
Piedino per mobile Alumix 7  
Möbelfuß Alumix 7



H	Cod.			
100	<b>20230</b>	<b>25</b>		4
120	<b>20231</b>	<b>25</b>		4
150	<b>20232</b>	<b>25</b>		4
100	<b>20393</b>	<b>25</b>		20
120	<b>20391</b>	<b>25</b>		20
150	<b>20392</b>	<b>25</b>		20

Plastic / Tecnoplastica / Kunststoff



Adjustable feet for furniture with hexagonal base M6, with bolt  
 Piedino regolabile a base esagonale M6 con bussola  
 Nivellierfuß mit sechseckigem Fußteller, M6, mit Verstellerschraube



H	Cod.		
31	<b>20200</b>	<b>15</b>	20

Steel and plastic / Acciaio e tecnoplastica / Stahl und Kunststoff

Adjustable feet for furniture with hexagonal base M6  
 Piedino regolabile per mobile, base esagonale  
 Nivellierfuß für Möbel mit sechseckigem Fußteller, M6



H	Cod.		
20	<b>20201</b>	<b>05</b>	20
25	<b>20202</b>	<b>05</b>	20
30	<b>20203</b>	<b>05</b>	20

Steel and plastic / Acciaio e tecnoplastica / Stahl und Kunststoff

Adjustable feet for furniture with interior adjustment M10  
 Piedino regolabile per mobile, base circolare, M10  
 Nivellierfuß für Möbel mit inneren Regulierung, M10



H	Cod.		
38	<b>20208</b>	<b>05</b>	20
46	<b>20209</b>	<b>05</b>	20
61	<b>20210</b>	<b>05</b>	20

Steel and plastic / Acciaio e tecnoplastica / Stahl und Kunststoff

Adjustable feet for furniture with hexagonal base M8  
 Regolabili per mobile M8, base esagonale e regolazione esterna  
 Nivellierfuß mit sechseckigem Fußteller, M8



H	Cod.		
38	<b>20206</b>	<b>05</b>	20

Steel and plastic / Acciaio e tecnoplastica / Stahl und Kunststoff

Adjustable feet for furniture, circular base M6  
 Piedino regolabile per mobile, base circolare, M6  
 Nivellierfuß für Möbel mit rundem Fußteller, M6



Ø	Cod.		
35	<b>20204</b>	<b>25</b>	20
43	<b>20205</b>	<b>25</b>	20

Steel and plastic / Acciaio e tecnoplastica / Stahl und Kunststoff

Adjustable feet for furniture with circular base, M10  
 Piedini regolabili con base circolare M10, D. 43 mm  
 Nivellierfuß für Möbel mit rundem Fußteller, M10



H	Cod.		
37	<b>20207</b>	<b>64</b>	10

Steel and plastic / Acciaio e tecnoplastica / Stahl und Kunststoff

Ledown2 Circular leveller D12x76  
 Regolabili Ledown2 circolari D12x76  
 Runder Nivellierer Lodown2, D. 12 mm, H. 76 mm



H	Cod.		
70	<b>20227</b>	<b>05</b>	10

Steel and plastic / Acciaio e tecnoplastica / Stahl und Kunststoff

**Max.**  
250 kg

Furniture leveller M10  
 Regolabili per mobile M10  
 Nivellierfuß für Möbel M10



H	Cod.		
46	<b>20306</b>	<b>05</b>	10

Steel and plastic / Acciaio e tecnoplastica / Stahl und Kunststoff

Nails sliders for furniture  
 Pattini di protezione con chiodo per mobile  
 Möbelgleiter mit Nagel



Cod.				
<b>20303</b>	<b>15</b>	<b>16</b>	<b>17</b>	100
<b>20304</b>	<b>15</b>	<b>16</b>	<b>17</b>	1.000

Steel and plastic / Acciaio e tecnoplastica / Stahl und Kunststoff



## Pistons and springs Pistoni e braccetti / Türdämpfer und Klappenhalter

Spring for lift-up door Agile  
Braccetto per ante a ribalta verso l'alto Agile  
Klappenhalter für Hubtür Agile



Size	Cod.			
580 - 1.250	<b>12130</b>	<b>15</b>	<b>23</b>	1
960 - 2.040	<b>12131</b>	<b>15</b>	<b>23</b>	1
1.800 - 3.500	<b>12132</b>	<b>15</b>	<b>23</b>	1
3.200 - 9.000	<b>12135</b>	<b>15</b>	<b>23</b>	1

Steel and plastic / Acciaio e tecnoplastica / Stahl und Kunststoff



Batch of NSDX springs for lift-up doors  
Kit Braccetti pensili per ante a ribalta verso l'alto NSDX  
Klappenhalter-Set für Hubtüren NSDX



Size	Cod.		
20 - 70 kg x cm	<b>12756</b>	<b>07</b>	1

Steel and zamak / Acciaio e zama / Stahl und Zamak



Batch of NSDX springs for folding doors  
Braccetti a ribalta NSDX  
Klappenhalter-Set für Klapptüren NSDX



Size	Cod.		
20 - 70 kg x cm	<b>12757</b>	<b>07</b>	1

Steel and zamak / Acciaio e zama / Stahl und Zamak

Batch of NSDX springs for cabinet doors  
Braccetto cassapanca NSDX  
Klappenhalter-Set für Truhentüren NSDX



Size	Cod.		
20 - 70 kg x cm	<b>12758</b>	<b>07</b>	1

Steel and zamak / Acciaio e zama / Stahl und Zamak



Springs for folding doors  
Braccetti per porte a battente  
Klappenhalter für Klapptüren

Cod.		
<b>10156</b>	<b>62</b>	<b>2</b>

Aluminium and steel  
Alluminio e acciaio  
Aluminium und Stahl



Gas struts for lift-up doors  
Pistone a gas per ante a ribalta verso l'alto con forza  
Türdämpfer mit Gasdruck für Hubtüren



Size	Cod.		
5 kg - 100 mm	<b>10059</b>	<b>25</b>	1
8 kg - 100 mm	<b>10057</b>	<b>25</b>	1
11 kg - 100 mm	<b>10058</b>	<b>25</b>	1
5 kg - 80 mm	<b>10109</b>	<b>25</b>	1
8 kg - 80 mm	<b>10056</b>	<b>25</b>	1
11 kg - 80 mm	<b>10080</b>	<b>25</b>	1
5 kg - 100 mm	<b>12744</b>	<b>25</b>	10
8 kg - 100 mm	<b>12742</b>	<b>25</b>	10
11 kg - 100 mm	<b>12743</b>	<b>25</b>	10
5 kg - 80 mm	<b>12749</b>	<b>25</b>	10
8 kg - 80 mm	<b>12741</b>	<b>25</b>	10
11 kg - 80 mm	<b>12745</b>	<b>25</b>	10

Steel and plastic / Acciaio e tecnoplastica /  
Stahl und Kunststoff

Gas struts for lift-up doors  
Pistone a gas per ante a ribalta verso l'alto con forza  
Türdämpfer mit Gasdruck für Hubtüren



Size	Cod.		
5 kg - 100 mm	<b>12760</b>	<b>25</b>	20
8 kg - 100 mm	<b>12761</b>	<b>25</b>	20
11 kg - 100 mm	<b>12762</b>	<b>25</b>	20
5 kg - 80 mm	<b>12763</b>	<b>25</b>	20
8 kg - 80 mm	<b>12764</b>	<b>25</b>	20
11 kg - 80 mm	<b>12765</b>	<b>25</b>	20

Steel and plastic / Acciaio e tecnoplastica /  
Stahl und Kunststoff

Gas struts for folding doors  
Pistone per ante a ribalta con forza  
Türdämpfer mit Gasdruck für Klapptüren



Size	Cod.		
12 kg - 100 mm	<b>10082</b>	<b>25</b>	1
6 kg - 80 mm	<b>10055</b>	<b>25</b>	1
12 kg - 80 mm	<b>10081</b>	<b>25</b>	1
12 kg - 100 mm	<b>12747</b>	<b>25</b>	10
6 kg - 80 mm	<b>12740</b>	<b>25</b>	10
12 kg - 80 mm	<b>12746</b>	<b>25</b>	10

Steel and plastic / Acciaio e tecnoplastica /  
Stahl und Kunststoff

Gas struts for folding doors  
Pistone per ante a ribalta con forza  
Türdämpfer mit Gasdruck für Klapptüren



Size	Cod.		
6 kg - 100 mm	<b>12766</b>	<b>25</b>	20
12 kg - 100 mm	<b>12767</b>	<b>25</b>	20
6 kg - 100 mm	<b>12768</b>	<b>25</b>	20
12 kg - 100 mm	<b>12769</b>	<b>25</b>	20

Steel and plastic / Acciaio e tecnoplastica /  
Stahl und Kunststoff

Lateral hitch for doors with gas struts  
Aggancio laterale per ante con pistoni  
Seitlicher Befestiger für Türen mit Türdämpfer



Pivot	Cod.		
Yes	<b>12770</b>	<b>07</b>	20
No	<b>12771</b>	<b>07</b>	20

Steel / Acciaio / Stahl

Hook for doors with gas strut  
Aggancio per ante a pistone  
Befestiger für Tür mit Türdämpfer



Type	Cod.		
For wood / aluminum	<b>12772</b>	<b>25</b>	20
For aluminum	<b>12773</b>	<b>25</b>	20

Steel / Acciaio / Stahl

Slip transparent caster wheels with a mounting plate  
Ruote Slip con piastra per montaggio  
Rollen Slip mit Anschraubplatte



∅	Cod.		
50	<b>20360</b>	<b>20</b>	1
75	<b>20361</b>	<b>20</b>	1

Steel and plastic / Acciaio e tecnoplastica / Stahl und Kunststoff

Caster wheels Slip 2 with a mounting plate  
Ruote Slip 2 con piastra per montaggio  
Rollen Slip 2 mit Anschraubplatte



∅	Cod.		
50	<b>20362</b>	<b>21</b>	1
75	<b>20363</b>	<b>21</b>	1
100	<b>20030</b>	<b>21</b>	1
50 (M8 x 15)	<b>20371</b>	<b>21</b>	1

Steel and plastic / Acciaio e tecnoplastica / Stahl und Kunststoff



Caster wheels Slip with a mounting plate  
Route Slip con piastra per montaggio  
Rollen Slip mit Anschraubplatte



∅	Cod.		
50	<b>20369</b>	<b>64</b>	1
75	<b>20370</b>	<b>64</b>	1

Steel and plastic / Acciaio e tecnoplastica / Stahl und Kunststoff

Caster wheels Silent  
Ruote Silent  
Rollen Silent



∅	Cod.		
75	<b>20372</b>	<b>21</b>	1
75 (M10 x 20)	<b>20373</b>	<b>21</b>	1

Steel and plastic / Acciaio e tecnoplastica / Stahl und Kunststoff



Caster wheels Bowl with a mounting plate  
Ruote Bowl con piastra per montaggio  
Rollen Bowl mit Anschraubplatte



∅	Cod.		
50	<b>20364</b>	<b>21</b>	1
75	<b>20365</b>	<b>21</b>	1

Steel and plastic / Acciaio e tecnoplastica / Stahl und Kunststoff

Caster wheels for chest of drawers  
Ruote per cassetiera  
Rollen für Schublade



∅	Cod.		
50	<b>20366</b>	<b>17</b>	1
40	<b>20367</b>	<b>17</b>	1

Steel and plastic / Acciaio e tecnoplastica / Stahl und Kunststoff

Caster wheels Bowl with a mounting plate  
Ruote Bowl con piastra per montaggio  
Rollen Bowl mit Anschraubplatte



∅	Cod.		
30	<b>20368</b>	<b>17</b>	1

Steel and plastic / Acciaio e tecnoplastica / Stahl und Kunststoff

Caster wheels for chest of drawers  
Ruote per cassetiera  
Rollen für Schublade



∅	Cod.		
40	<b>20378</b>	<b>17</b>	1

Steel and plastic / Acciaio e tecnoplastica / Stahl und Kunststoff

Mak caster wheels D. 80 mm with a mounting plate  
 Rotelle Mak D. 80 mm con piastra di montaggio  
 Rollen Mak, D. 80 mm, mit Anschraubplatte



Ø	Cod.		
80	20379	21	1

Steel and plastic / Acciaio e tecnoplastica / Stahl und Kunststoff

Auxiliary caster wheels, D. 13 mm for rotating cover  
 Rotelle ausiliari per mobile, D. 13 mm per piano girevole  
 Hilfsrollen für Möbel D. 13 mm für Schwenkplatte



Ø	Cod.		
80	20399	05	20

Steel and plastic / Acciaio e tecnoplastica / Stahl und Kunststoff

## Shelf supports Reggipiani / Regalstützen

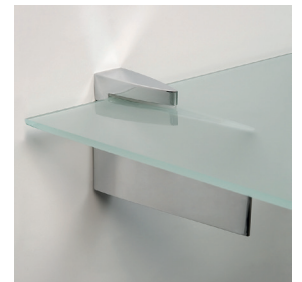
Zipp 2 Shelf support for Wood/Glass  
 Supporto Zipp 2 per mensola in legno o vetro  
 Bodenträger Zipp 2 für Holz- oder Glasregale



Cod.		
40096	25	2

Plastic and zamak / Tecnoplastica e zama / Kunststoff und Zamak

Zipp 3 Shelf support for Wood/Glass  
 Supporto Zipp 3 per mensola in legno o vetro  
 Bodenträger Zipp 3 für Holz- oder Glasregale



Cod.		
40097	25	2

Plastic and zamak / Tecnoplastica e zama / Kunststoff und Zamak

Aguila Shelf support for Wood/Glass  
 Supporto Aguila per mensola in legno o vetro  
 Bodenträger Aguila für Holz- oder Glasregale



Cod.		
40093	25	2

Plastic and zamak / Tecnoplastica e zama / Kunststoff und Zamak

Halcon Shelf support for Wood/Glass  
 Reggipiano per mensole in legno/vetro Halcón  
 Bodenträger Halcón für Holz- oder Glasregale



Cod.			
40092	24	25	2

Plastic and zamak / Tecnoplastica e zama / Kunststoff und Zamak

Venecia Shelf support for Wood/Glass  
 Supporto Venezia per mensola in legno o vetro  
 Bodenträger Venecia für Holz- oder Glasregale



Cod.		
40089	25	2

Plastic and zamak / Tecnoplastica e zama / Kunststoff und Zamak

Squad 2 Shelf support for Wood/Glass  
 Supporto Squad 2 per mensola in legno o vetro  
 Bodenträger Squad 2 für Holz- oder Glasregale



Cod.		
40091	25	2

Plastic and zamak / Tecnoplastica e zama / Kunststoff und Zamak

Mirlo Shelf support for Wood/Glass  
 Supporto Mirlo per mensola in legno o vetro  
 Bodenträger Mirlo für Holz- oder Glasregale



Cod.			
40095	25		2

Plastic and zamak /  
 Tecnoplastica e zama /  
 Kunststoff und Zamak

Azor shelf support for wood/glass  
 Reggipiano per mensole di legno/vetro Azor  
 Bodenträger Azor für Holz- oder Glasregale



Cod.			
40094	24	25	2

Plastic and zamak /  
 Tecnoplastica e zama /  
 Kunststoff und Zamak

Pelicano shelf support for Wood/Glass  
 Supporto Pelicano per mensola in legno o vetro  
 Bodenträger Pelicano für Holz- oder Glasregale



Cod.			
40090	25		2

Plastic and zamak /  
 Tecnoplastica e zama /  
 Kunststoff und Zamak

Hidden shelf support for wood  
 Supporto a scomparsa Phantom per mensola in legno  
 unsichtbarer Bodenträger Phantom für Holzregal



Cod.			
40099	25		2

Steel / Acciaio / Stahl

21AD Shelf support for Wood, D. 5 mm  
 Supporto per mensole in legno 21A D. 5 mm  
 Bodenträger für Holzregal 21A D. 5 mm



∅	Cod.			
5	40227	07		50

Zamak / Zama / Zamak

102 Straight shelf holder brackets for wood, D. 5 mm  
 Squadra reggimensola con perno scanalato 102 per legno D. 5 mm  
 Bodenträger mit kanneliertem Bolzen 102 D. 5 mm für Holz



∅	Cod.			
5	40229	07		50

Zamak / Zama / Zamak

074 Straight shelf holder brackets for wood D. 5 mm  
 Squadra reggimensola con perno liscio 074 per legno D. 5 mm  
 Bodenträger mit ebenem Bolzen 074 D. 5 mm für Holz



∅	Cod.			
5	40228	07		50

Zamak / Zama / Zamak

103 Shelf supports for wood with 2 bolt, D. 5 mm  
 Supporto a due perni per mensola in legno 103 D. 5 mm  
 Bodenträger mit 2 Bolzen für Holzregale 103 D. 5 mm



∅	Cod.			
5	40230	07		50

Zamak / Zama / Zamak

Shelf support for Wood, teaspoon  
 Reggipiano per mensole in legno, a cucchiaino  
 Bodenträger für Holzregale, Löffelform



∅	Cod.			
3	40231	07		50
5	40232	07		50

Zamak / Zama / Zamak

623 Tubular shelf support, D. 5 mm for Wood  
 Reggipiani tondo 623 D. 5 mm per legno  
 Bodenträger Röhrenform 623 D. 5 mm für Holz



∅	Cod.			
5	40233	07		50

Zamak / Zama / Zamak

097 Tubular shelf support, D. 3 mm for Wood  
 Reggipiani tondo 097 D. 3 mm per legno  
 Bodenträger Röhrenform 097 D. 3 mm für Holz



∅	Cod.			
3	40234	07		50

Zamak / Zama / Zamak

Shelf support for wood, with pivot  
 Reggipiano per mensola in legno, con perno  
 Bodenträger transparent für Holzregale, mit Zapfen



∅	Cod.			
3	40235	20		50
5	40236	20		50

Steel and plastic / Acciaio  
 e tecnoplastica / Stahl und  
 Kunststoff

Evo Shelf support for glass  
Reggipiano per piani in vetro Evo  
Bodenträger für Glasregale Evo



∅	Cod.		
5	40244	07	50

Zamak / Zama / Zamak



138 Shelf support for glass, D. 5 mm  
Reggipiano per piani in vetro 138 D. 5 mm  
Bodenträger für Glasregale 138 D. 5 mm



∅	Cod.		
5	40238	07	50

Plastic and zamak /  
Tecnoplastica e zama /  
Kunststoff und Zamak

557 Shelf support for glass  
Reggipiano per mensole in vetro  
Bodenträger für Glasregale



∅	Cod.		
3	40239	20	50
5	40240	20	50

Steel and plastic / Acciaio  
e tecnoplastica / Stahl und  
Kunststoff

21B Shelf support for glass D. 5 mm  
Reggipiano per piani in vetro 21B D. 5 mm  
Bodenträger für Glasregale 21B D. 5 mm



∅	Cod.		
5	40237	07	50

Plastic and zamak /  
Tecnoplastica e zama /  
Kunststoff und Zamak

561 Shelf support for glass, D. 5 mm  
Reggipiano per piani in vetro 561 D. 5 mm  
Bodenträger für Glasregale 561 D. 5 mm



∅	Cod.		
5	40246	07	50

Plastic and zamak /  
Tecnoplastica e zama /  
Kunststoff und Zamak

San Remo Shelf support for glass, D. 5 mm  
Reggipiano per piani in vetro San Remo D. 5 mm  
Bodenträger für Glasregale San Remo D. 5 mm



∅	Cod.		
5	40241	07	50

Plastic and zamak /  
Tecnoplastica e zama /  
Kunststoff und Zamak

Portofino Shelf support for glass, D. 5 mm  
Reggipiano per piani in vetro Portofino D. 5 mm  
Bodenträger für Glasregale Portofino D. 5 mm



∅	Cod.		
5	40245	07	50

Plastic and zamak /  
Tecnoplastica e zama /  
Kunststoff und Zamak

540 Transparent shelf support for glass  
Supporto trasparente per mensole in vetro 540  
Bodenträger transparent für Glasregale 540



∅	Cod.		
5	40247	20	50

Plastic / Tecnoplastica /  
Kunststoff

Shelf support for glass with rubber  
Reggipiano per mensole in vetro, con gomma  
Bodenträger für Glasregale, mit Gummi



∅	Cod.		
3	40242	07	50
5	40243	07	50

Steel and plastic / Acciaio  
e tecnoplastica / Stahl und  
Kunststoff

Orlando furniture handle  
Maniglia per mobile Orlando  
Möbelgriff Orlando



L	Cod.		
128	92904	51	1
160	93527	51	1
192	92903	51	1
224	93528	51	1
256	92902	51	1
320	92901	51	1
384	92900	51	1
448	92925	51	1
128	91635	51	10
160	91636	51	10
192	91637	51	10
224	91638	51	10
256	91639	51	10
320	91640	51	10
384	91641	51	10
448	91642	51	10

Steel / Acciaio / Stahl



Seoul furniture handle  
Maniglia per mobile Seoul  
Möbelgriff Seoul



L	Cod.		
128	93081	51	1
192	93082	51	1
128	91643	51	20
192	91644	51	20

Steel / Acciaio / Stahl

Porto furniture handle  
Maniglia per mobile Porto  
Möbelgriff Porto



L	Cod.		
128	92978	51	1
160	92979	51	1
192	92980	51	1
224	92981	51	1
256	92982	51	1
128	91645	51	25
160	91646	51	25
192	91647	51	20
224	91648	51	20
256	91649	51	20

Steel / Acciaio / Stahl

Coimbra furniture handle  
Maniglia per mobile Coimbra  
Möbelgriff Coimbra



L	Cod.		
96	92988	11	64
128	92989	11	64
96	91633	11	64
128	91634	11	64

Steel / Acciaio / Stahl



Setubal furniture handle  
Maniglia per mobile Setubal  
Möbelgriff Setubal

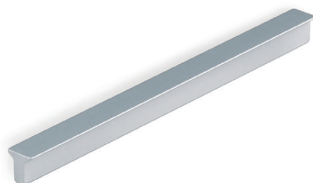


L	Cod.			
32	<b>93002</b>	<b>51</b>		1
128	<b>93004</b>	<b>51</b>		1
32	<b>91660</b>	<b>51</b>		25
128	<b>91661</b>	<b>51</b>		25

Aluminium / Alluminio / Aluminium



Dublin furniture handle  
Maniglie per mobile Dublin  
Möbelgriff Dublin



L	Cod.			
64	<b>93031</b>	<b>62</b>		1
128	<b>93032</b>	<b>62</b>		1
160	<b>93033</b>	<b>62</b>		1
64	<b>91657</b>	<b>62</b>		25
128	<b>91658</b>	<b>62</b>		25
160	<b>91659</b>	<b>62</b>		25

Aluminium / Alluminio / Aluminium

Glasgow furniture handle  
Maniglia per mobile Glasgow  
Möbelgriff Glasgow



L	Cod.			
64	<b>93035</b>	<b>62</b>		1
64	<b>91629</b>	<b>62</b>		25

Aluminium / Alluminio / Aluminium

Tulip1 adhesive furniture handle  
Maniglia adesiva per mobile Tulip1  
Selbstklebender Möbelgriff Tulip1



L	Cod.			
64	<b>91621</b>	<b>62</b>		20
94	<b>91622</b>	<b>62</b>		20
126	<b>91623</b>	<b>62</b>		20
158	<b>91624</b>	<b>62</b>		20

Aluminium / Alluminio / Aluminium

Tulip2 adhesive furniture handle  
Maniglia adesiva per mobile Tulip2  
Selbstklebender Möbelgriff Tulip2



L	Cod.			
62	<b>91625</b>	<b>62</b>		20
94	<b>91626</b>	<b>62</b>		20
126	<b>91627</b>	<b>62</b>		20
158	<b>91628</b>	<b>62</b>		20

Aluminium / Alluminio / Aluminium

Bristol furniture handle  
Maniglia per mobile Bristol  
Möbelgriff Bristol



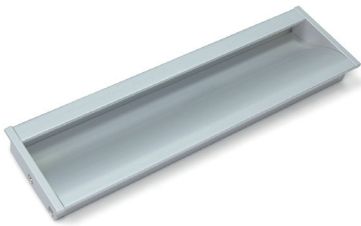
L	Cod.			
160	<b>92945</b>	<b>11</b>	<b>62</b>	1
256	<b>92946</b>	<b>11</b>	<b>62</b>	1
160	<b>91631</b>	<b>11</b>	<b>62</b>	20
256	<b>91632</b>	<b>11</b>	<b>62</b>	20

Aluminium / Alluminio / Aluminium





Bologna furniture handle  
Maniglia per mobile Bologna  
Möbelgriff Bologna



L	Cod.		
160	<b>92922</b>	<b>62</b>	1
160	<b>91630</b>	<b>62</b>	20

Aluminium / Alluminio / Aluminium

Verona Furniture knob  
Pomolo Verona per mobile  
Möbelknopf Verona



H	Cod.		
25	<b>91671</b>	<b>62</b>	25

Aluminium / Alluminio / Aluminium

Como furniture handle  
Maniglia per mobile Como  
Möbelgriff Como



L	Cod.		
96	<b>91604</b>	<b>25</b>	25

ABS - PVC

Bari furniture handle  
Maniglia per mobile Bari  
Möbelgriff Bari



L	Cod.		
64	<b>91605</b>	<b>25</b>	25
96	<b>91606</b>	<b>25</b>	25
128	<b>91607</b>	<b>25</b>	25
160	<b>91608</b>	<b>25</b>	25

ABS - PVC

Kyoto furniture handle  
Maniglia per mobile Kyoto  
Möbelgriff Kyoto



L	Cod.		
96	<b>93031</b>	<b>51 52</b>	1
128	<b>93032</b>	<b>51 52</b>	1
160	<b>93033</b>	<b>51 52</b>	1
96	<b>93557</b>	<b>51 52</b>	20
128	<b>93558</b>	<b>51 52</b>	20
160	<b>93559</b>	<b>51 52</b>	20

Zamak / Zama / Zamak

Kobe furniture handle  
Maniglia per mobile Kobe  
Möbelgriff Kobe



L	Cod.		
96	<b>93560</b>	<b>51 52</b>	1
128	<b>93561</b>	<b>51 52</b>	1
160	<b>93562</b>	<b>51 52</b>	1
96	<b>91694</b>	<b>51 52</b>	20
128	<b>91695</b>	<b>51 52</b>	20
160	<b>91696</b>	<b>51 52</b>	20

Zamak / Zama / Zamak



Fuji furniture handle  
Maniglia per mobile Fuji  
Möbelgriff Fuji



L	Cod.			
96	93539	25	51	1
128	93540	25	51	1
160	93549	25	51	1
96	91610	25	51	25
128	91611	25	51	25
160	91662	25	51	25

Zamak / Zama / Zamak

Montreal furniture handle  
Maniglia per mobile Montreal  
Möbelgriff Montreal



L	Cod.				
128	92917	11	25	51	1
160	92918	11	25	51	1
128	91653	11	25	51	20
160	91654	11	25	51	20

Zamak / Zama / Zamak

Habana furniture handle  
Maniglia per mobile Habana  
Möbelgriff Habana



L	Cod.			
128	92986	51		1
160	92987	51		1
128	91612	51		25
160	91613	51		25

Zamak / Zama / Zamak



Shanghai furniture handle  
Maniglia per mobile Shanghai  
Möbelgriff Shanghai



L	Cod.			
128	93158	51	64	1
128	91651	51	64	25

Zamak / Zama / Zamak

Tenerife furniture handle  
Maniglia per mobile Tenerife  
Möbelgriff Tenriffe



L	Cod.				
128	93152	11	25	51	1
128	91618	11	25	51	25

Zamak / Zama / Zamak

Bombay furniture handle  
Maniglia per mobile Bombay  
Möbelgriff Bombay



L	Cod.			
128	92921	25	51	1
128	91609	25	51	20

Zamak / Zama / Zamak

Minneapolis furniture handle  
Maniglia per mobile Minneapolis  
Möbelgriff Minneapolis



L	Cod.			
160	93155	51		1
160	91656	51		25

Zamak / Zama / Zamak

Papua furniture handle  
Maniglia per mobile Papua  
Möbelgriff Papua



L	Cod.			
76	93491	08	68	1
76	91603	08	68	20

Zamak / Zama / Zamak

Nairobi furniture handle  
Maniglia per mobile Nairobi  
Möbelgriff Nairobi



L	Cod.			
96	93493	08		1
96	91602	08		20

Zamak / Zama / Zamak

Nagoya furniture handle  
Maniglia Nicaragua per mobile  
Möbelgriff Nagoya



Cod.				
93556	51	52	1	
91664	51	52	10	

Zamak / Zama / Zamak

Lima furniture knob  
Pomolo Lima per mobile  
Möbelknopf Lima



Cod.				
93552	51		1	
91663	51		25	

Zamak / Zama / Zamak

Tucson furniture knob  
Pomolo per mobile Tucson  
Möbelknopf Tucson



Cod.				
92920	11	51	64	1
91650	11	51	64	25

Zamak / Zama / Zamak

Milano furniture knob  
Pomolo per mobile Milano  
Möbelknopf Milano



Cod.				
91655	51		25	

Zamak / Zama / Zamak

Santiago furniture knob  
Pomolo per mobile Santiago  
Möbelknopf Santiago



Cod.				
92995	51		1	
91652	51		25	

Zamak / Zama / Zamak

Reno furniture knob  
Pomolo per mobile Reno  
Möbelknopf Reno



Cod.				
91617	64		25	

Zamak / Zama / Zamak

Oregon furniture knob  
Pomolo per mobile Oregon  
Möbelknopf Oregon



Cod.				
92985	13	51	1	
91615	13	51	25	

Zamak / Zama / Zamak

Panama furniture knob  
Pomolo per mobile Panama  
Möbelknopf Panamá



Cod.				
92919	11	51	1	
91616	11	51	20	

Zamak / Zama / Zamak

Nime furniture knob  
Pomolo per mobile Nimes  
Möbelknopf Nimes



Cod.				
92977	51		1	
91614	51		25	

Zamak / Zama / Zamak

Vienna furniture knob  
Pomolo per mobile Vienna  
Möbelknopf Vienna



Ø	Cod.			
20	92983	-	51	1
25	92984	-	51	1
20	91619	13	51	25
25	91620	-	51	25

Zamak / Zama / Zamak

Mali Furniture knob  
Pomolo per mobile Mali  
Möbelknopf Mali



Cod.				
93470	08	14	1	
91600	08	14	25	

Zamak / Zama / Zamak

Marrakech furniture handle  
Maniglia per mobile Marrakech  
Möbelgriff Marrakech



Cod.				
93489	08	14	1	
91601	08	14	20	

Zamak / Zama / Zamak

## Screws, nuts and brackets

### Perno, bussola y squadra / Schrauben, Muttern und Winkel

XZ self-tapping screw with Pozidrive flathead  
Vite autofilettante XZ con testa piana Pozidrive  
Verbindungsschraube XZ mit Flachkopf Pozidrive



Ø	L	Cod.		
3,5	16	40278	05	1.000
3,5	20	40279	05	1.000
3,5	30	40280	05	500
4	16	40281	05	500
4	20	40282	05	500
4	30	40283	05	500

Steel / Acciaio / Stahl

Pozidrive flathead euro screw  
Vite Euro con testa piana Pozidrive  
Euroschraube mit Flachkopf Pozidrive



Ø	L	Cod.		
6,2	11	40274	05 07	500
6,2	13	40275	05 07	500

Steel / Acciaio / Stahl

Extra flat head screw and M4 bolt  
Vite maschio e femmina M4 con testa extrapiana  
Gewindeschrauben mit extraflachem Kopf und Hülsenmuttern M4



Ø	L	Cod.		
10	14	40248	07	50
10	20	40249	07	50
10	25	40250	07	50
10	30	40251	07	50
10	35	40252	07	50
10	40	40253	07	50

Steel / Acciaio / Stahl

Self-tapping screw with Allen flathead screw  
Vite autofilettante con testa piana Allen  
Verbindungsschraube mit Flachkopf Allen



Ø	L	Cod.		
7	50	40276	05	500
5	50	40277	05	500

Steel / Acciaio / Stahl

Barbed bolt  
Bussola ragno  
Einschlagmutter



M	Cod.		
6	40254	05	20
8	40255	05	20
10	40256	05	20
6	40188	05	50
8	40189	05	50
10	40190	05	50

Steel / Acciaio / Stahl

Nut for countersunk holes  
Bussola per fori svasati  
Mutter für Senkbohrungen



M	Cod.		
6	40286	01 05	100
8	40287	01 05	100

Zamak / Zama / Zamak

M4 Brass expandable nuts  
Bussola ad espansione M4 in ottone  
Ausdehnbare Mutter M4 aus Messing



M	Cod.		
4	40284	02	100

Latón / Lation / Latão

M6 Brass expandable nuts with a sphere in their interior  
Bussola ad espansione M6 in ottone con sfera interna  
Ausdehnbare Mutter M6 aus Messing mit innerer Kugel



M	Cod.		
6	40285	02	100

Latón / Lation / Latão

Bolt for screwing  
Bussola per avvitare  
Schraubenmutter



M	Cod.		
8	40180	05	50
10	40181	05	50

Steel / Acciaio / Stahl

Flange bolt  
Bussola con testa  
Hutmutter



M	Cod.		
6	40182	05	50
8	40183	05	50
10	40184	05	50

Steel / Acciaio / Stahl

01 Natural zamak / Zama grezza / Natürliches Zamak  
02 Natural Brass / Ottone naturale / Messing  
05 Zinc plated / Zincato / Verzinkt  
07 Nickel plated / Nichelato / Vernickelt  
15 White plastic / Plastica bianca / Weisser Kunststoff

16 Brown / Marrone / Braun  
17 Black plastic / Plastica nera / Schwarzer Kunststoff  
19 Oak effect / Finitura rovere / Effekt Eiche  
20 Transparent / Trasparente / Transparent  
21 Grey plastic / Plastica grigia / Grauer Kunststoff

26 Cherry effect / Finitura ciliegio / Effekt Kirsche  
27 Grey textile effect / Effetto tessuto grigio / Grauer Textil-Effekt  
28 Beige textile effect / Effetto tessuto beige / Beiger Textil-Effekt  
30 Beech effect / Effetto faggio / Buche gebeizt  
78 Beech wood / Legno faggio / Buchenholz  
83 Wenge effect / Effetto wengé / Wenge gebeizt

Wooden dowels  
Spine in legno  
Holzdübel



Ø	L	Cod.		
6	30	40220	78	100
8	30	40221	78	100
8	35	40222	78	100
8	40	40223	78	100
10	40	40224	78	100
6	30	40293	78	1.000
8	30	40294	78	1.000
8	35	40295	78	1.000
8	40	40296	78	1.000
10	40	40297	78	1.000

Wood / Legno / Holz

Adhesive bumpers  
Paracolpi adesivo  
Schutzpuffer, selbstklebend



Ø	L	Cod.		
10	3	40260	20	500
7	1,5	40261	20	500
10	1,5	40262	20	500

Plastic / Tecnoplastica / Kunststoff

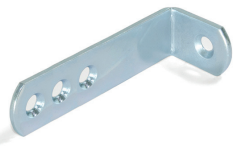
Adhesive screw covers  
Tappi Copriforo adesivo  
Abdeckkappe für Schrauben, selbstklebend



Ø	Cod.												
13	40263	15	16	17	19	21	23	26	27	28	30	83	1.000
13	40264	15	16	17	19	21	23	26	27	28	30	83	200
20	40265	15	16	17	19	21	23	26	27	28	30	83	900
20	40266	15	16	17	19	21	23	26	27	28	30	83	150

Plastic / Tecnoplastica / Kunststoff

Furniture brackets 70 x 22,5 mm  
Squadra di unione per mobile 70 x 22,5 mm  
Montagewinkel für Möbel, 70 x 22.5 mm



Size	Cod.		
70 x 22,5	40213	05	50

Steel / Acciaio / Stahl

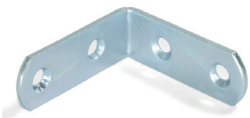
Furniture brackets, 34 x 23,5 mm  
Squadra di unione per mobile, 34 x 23,5 mm  
Montagewinkel für Möbel, 34 x 23.5 mm



Size	Cod.		
34 x 23,5	40211	05	50

Steel / Acciaio / Stahl

Furniture brackets 42 x 42 mm  
Squadra di unione per mobile 42 x 42 mm  
Montagewinkel für Möbel, 42 x 42 mm



Size	Cod.		
42 x 42	40215	05	50

Steel / Acciaio / Stahl

Furniture brackets, 20 x 20,7 mm  
Squadra di unione per mobile 20,5 x 20,7 mm  
Montagewinkel für Möbel, 20.5 x 20.7 mm



Size	Cod.		
34 x 23,5	40209	07	50

Zamak / Zama / Zamak

Jointing Plates for furniture  
Piastra di unione 4 fori per mobile  
Verbindungsplatte für Möbelerückwand



Cod.		
40217	05	50

Steel / Acciaio / Stahl

Pre-mounted triangular fixing for wardrobe backs  
Fermaschiena triangolare pre-montato per armadi, Acciaio e Plastica, 50 u.  
Rückwandverbinder dreieckig, vormontiert



Cod.		
40216	17	50

Acero y plástico /  
Acier et plastique /  
Aço e plástico

Circular clamp for rear wardrobe  
Fermaschiena circolare per armadio  
Verbindungsklammer rund für Möbelerückwand



Cod.		
40218	05	50

Steel / Acciaio / Stahl

Rectangular clamp for rear wardrobe  
Fermaschiena rettangolare per armadio  
Verbindungsklammer rechteckig für Möbelerückwand



Cod.		
40219	05	50

Steel / Acciaio / Stahl

## Simbology / Simbologia / Symbolik

Cod. Code + Finishing Codice + Finitura Code + Ausführung	With CE certificate Con certificato CE Mit CE-Zertifizierung	Can be connected to various led lights Possibilità di connettere varie lampade Lichtquellen	Comes with remote control Dispone di telecomando Verfügt über Fernsteuerung
Soft closing Chiusura Soft Sanft schließend	Degree of protection Grado di protezione Schutzgrad	Manual cut Taglio manuale Manueller Schnitt	Timer Temporizzatore Zeitschalter
Thickness Spessore Dicke	Energy efficiency class Classe d'efficacità energetica Energieeffizienzklasse	Minimum distance of illuminated objects Distanza minima degli oggetti illuminati Mindestabstand beleuchteter Objekte	Dimmer Dimmer Dimmer
Espesor Épaisseur Espessura	AMP connection Connessione AMP AMP-Verbindung	Built-in lights Lampada ad incasso Einbauleuchte	Detection angle of sensor Angolo d'azione del sensore Erkennungswinkel des Sensors
Full overlay hinge Collo dritto Aufliegendes Topfscharnier	Longitude of cable Lunghezza cavo Kabellänge	Surface lights Lampada a superficie Anbauleuchte	Detection range of sensor Raggio d'azione del sensore Erkennungsbereich des Sensors
Overlay hinge Collo Mittelwinkel Topfscharnier	Includes the elements for the assembly Include gli elementi per il montaggio Enthält Montagezubehör	Diameter of holes Diametro di lavorazione Bohrlochdurchmesser	Maximum length 5 m. Lunghezza massima 5 m. Maximale Länge 5 m.
Insert hinge Collo alto Innenliegendes Topfscharnier	Beam angle Fascio di luce Lichtstrahl	LED light Lampada LED LED-Leuchte	

	3.000 - 3.900 K Luce calda Warm light Warmes Licht
	4.000 - 5.000 K Luce naturale Natural light Natürliches Licht
	5.100 - 7.000 K Luce fredda Cold light Kaltes Licht

Use constant voltage converter  
Utilizzare convertitore a tensione costante  
Mit Konstant-Spannungswandler verwenden

Runs off batteries  
Funziona con pile  
Batteriebetrieben

Without need to use LED-driver  
Senza necessità di utilizzare LED driver  
Kein LED-Konverter erforderlich

Comes with sensor  
Dispone di sensore  
Verfügt über Sensor

## Finishing / Finitura / Farbe

Natural zamak Zama grezza Natürliches Zamak	Black painted Verniciato nero Schwarz lackiert	Matt nickel Nichel opaco Mattes Nickel	Natural aluminium Alluminio naturale Natürliches Aluminium
Natural Brass Ottone naturale Messing	White plastic Plastica bianca Weisser Kunststoff	Metal-grey Grigio metallizzato Metallgrau lackiert	Matt anodized Anodizzato opaco Matt eloxiert
Zinc plated Zincato Verzinkt	Brown Marrone Braun	Cherry effect Finitura ciliegio Effekt Kirsche	Matt chrome plated Cromo opaco Matt verchromt
Nickel plated Nichelato Vernickelt	Black plastic Plastica nera Schwarzer Kunststoff	Grey textile effect Effetto tessuto grigio Grauer Textil-Effekt	Inox Inox Inox
Bronzed Bronzato Bronze	Oak effect Finitura rovere Effekt Eiche	Beige textile effect Effetto tessuto beige Beiger Textil-Effekt	Old silver Argento antico Altsilber
Brassed Ottonato Messing	Transparent Trasparente Transparent	Beech effect Effetto faggio Buche gebeizt	Anodizzato inox Inox eloxiert Rostfrei eloxiert
Chrome plated Cromo Verchromt	Grey plastic Plastica grigia Grauer Kunststoff	Anthracite grey Grigio antracite Anthrazitgrau	Beech wood Legno faggio Buchenholz
White painted Verniciato bianco Weiss lackiert	Oak effect Finitura rovere Effekt Eiche	Satin finished anodized Nichel satinato Transparentes Nickel	Wenge effect Effetto wenge Wenge gebeizt
Moka painted Verniciato moka Mokka lackiert	Anthracite grey Grigio antracite Anthrazitgrau	Titanium Titanium Titanium	

Lined area for notes, consisting of a large gray rectangle with horizontal lines.

[emucaonline.com/en](http://emucaonline.com/en)  
[emucaonline.com/it](http://emucaonline.com/it)  
[emucaonline.com/de](http://emucaonline.com/de)



CERTIQALITY  
È MEMBRO DELLA  
FEDERAZIONE CISO



06/2019