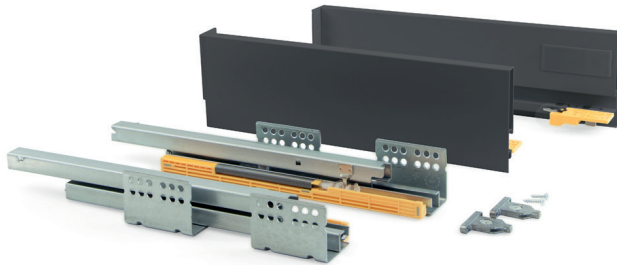


# Household Casa / Wohnbereich





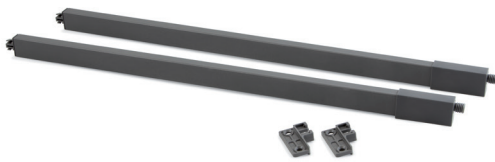
Kitchen and bathroom Concept drawer kit  
Cassetto per mobile e bagno Concept  
Schubladen-Kit für Küche und Bad Concept



	Depth	Cod.			
	300	31001	12	35	1
	350	31002	12	35	1
	400	31003	12	35	1
	450	31004	12	35	1
	500	31005	12	35	1
	300	31007	12	35	1
	350	31008	12	35	1
	400	31009	12	35	1
	450	31010	12	35	1
	500	31011	12	35	1
	350	31014	12	35	1
	400	31015	12	35	1
	450	31016	12	35	1
	500	31017	12	35	1

Steel / Acciaio / Stahl

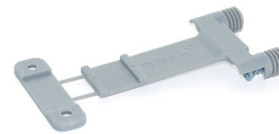
Set of gallery rails for Concept kitchen and bathroom drawers  
Set di astine per cassetto da cucina e bagno Concept  
Satz Relinge für Schubladen für Küche und Bad Concept



Depth	Cod.			
300	31101	12	35	1
350	31102	12	35	1
400	31103	12	35	1
450	31104	12	35	1
500	31105	12	35	1

Steel / Acciaio / Stahl

Lokbox joint for fastening the drawer bottom to the front  
Meccanismo Lokbox per fissare il fondo del cassetto al fronte  
Verbindung Lokbox zur Fixierung des Schubladenbodens an der Front



Cod.			
30492	21	20	

Plastic / Tecnoplastica / Kunststoff



See our lighting section for home  
Guarda la nostra sezione di illuminazione per casa  
Sehen Sie unseren Beleuchtungsabschnitt für Wohnbereich

P. 6

Kitchen and bathroom Vantage-Q drawer kit  
Cassetto per mobile e bagno Vantage-Q  
Schubladen-Kit für Küche und Bad Vantage-Q



	Depth	Cod.			
	350	<b>30153</b>	12	25	1
	400	<b>30154</b>	-	25	1
	450	<b>30155</b>	12	25	1
	500	<b>30156</b>	12	25	1

Steel / Acciaio / Stahl

	Depth	Cod.			
	350	<b>30184</b>	12	25	1
	400	<b>30623</b>	-	25	1
	450	<b>30185</b>	12	25	1
	500	<b>30186</b>	12	25	1

Steel / Acciaio / Stahl

	Depth	Cod.			
	350	<b>30187</b>	12	25	1
	400	<b>30624</b>	-	25	1
	450	<b>30188</b>	12	25	1
	500	<b>30189</b>	12	25	1

Steel / Acciaio / Stahl

Mounting templates for Vantage-Q  
Sagoma di montaggio per astina cassetto Vantage Q  
Montageplakette für Relinge der Schublade Vantage-Q



Cod.		
<b>41919</b>	21	1

Plastic / Tecnoplastica / Kunststoff



Cod.		
<b>41918</b>	21	1

Plastic / Tecnoplastica / Kunststoff

Kitchen and bathroom Ultrabox drawer kit  
Cassetto per mobile e bagno Ultrabox  
Schubladen-Kit für Küche und Bad Ultrabox



	Depth	Cod.			
	270	<b>43873</b>	25		1
	350	<b>43874</b>	25		1
	400	<b>43875</b>	25		1
	450	<b>43876</b>	25		1
	500	<b>43877</b>	25		1
	270	<b>30410</b>	25	10	
	350	<b>30027</b>	25	10	
	400	<b>30411</b>	25	10	
	450	<b>30028</b>	25	10	
	500	<b>30029</b>	25	10	

Steel / Acciaio / Stahl

	Depth	Cod.			
	270	<b>43937</b>	25		1
	350	<b>43938</b>	25		1
	400	<b>43878</b>	25		1
	450	<b>43879</b>	25		1
	500	<b>43880</b>	25		1
	270	<b>30413</b>	25	10	
	350	<b>30030</b>	25	10	
	400	<b>30414</b>	25	10	
	450	<b>30031</b>	25	10	
	500	<b>30032</b>	25	10	

Steel / Acciaio / Stahl

	Depth	Cod.			
	270	<b>43939</b>	25		1
	350	<b>43940</b>	25		1
	400	<b>43881</b>	25		1
	450	<b>43882</b>	25		1
	500	<b>43883</b>	25		1
	270	<b>30416</b>	25	10	
	350	<b>30033</b>	25	10	
	400	<b>30417</b>	25	10	
	450	<b>30034</b>	25	10	
	500	<b>30035</b>	25	10	

Steel / Acciaio / Stahl

Soft closing system for Ultrabox drawer L 250-300 mm  
Meccanismo di chiusura soft per cassetto Ultrabox L 350 - 500 mm  
Dämpfungssystem für Schublade Ultrabox L. 350-500 mm



L	Cod.	
350 - 500	<b>30428</b>	21 2

Plastic / Tecnoplastica / Kunststoff

Set of gallery rails for Ultrabox kitchen and bathroom drawers  
Set di astine per cassetto da cucina e bagno Ultrabox  
Satz Relinge für Schublade für Küche und Bad Ultrabox



Depth	Cod.		
350	<b>43942</b>	25	1
400	<b>43936</b>	25	1
450	<b>43935</b>	25	1
500	<b>43934</b>	25	1
350	<b>30036</b>	25	10
400	<b>30418</b>	25	10
450	<b>30037</b>	25	10
500	<b>30040</b>	25	10

Steel / Acciaio / Stahl



See our section of fittings for home  
Guarda la nostra sezione di ferramenta per casa  
Sehen Sie sich unsere Beschläge für Wohnbereich

P. 16 

Lighting  
Illuminazione  
Beleuchtung



Volans LED spotlight with natural light  
Faretto LED Volans con luce naturale  
LED-Anbauleuchte Volans mit natürlichem Licht



Lumen	WATT	Colour	LEDs	Cod.	
250 lm	4 W	4.000 K	1	50532	62

Aluminium and plastic / Alluminio e tecnoplastica / Aluminium und Kunststoff



Crux-in LED spotlight for embedding with cool light  
Faretto LED Crux-in da incasso a luce fredda  
LED-Einbauleuchte Crux-in mit kaltem Licht



Lumen	WATT	Colour	LEDs	Cod.	
110 lm	1,8 W	6.000 K	24	59152	25 51
127 lm	1,8 W	4.500 K	24	59153	- 51

Plastic / Tecnoplastica / Kunststoff



Crux-in LED spotlight with support and cool light  
Faretto LED Crux-in con supporto a luce fredda  
LED-Spot Crux-in mit Stütze und kaltem Licht



Lumen	WATT	Colour	LEDs	Cod.	
110 lm	1,8 W	6.000 K	24	50729	25 51
127 lm	1,8 W	4.500 K	24	50730	- 51

Plastic / Tecnoplastica / Kunststoff



Sunled LED spotlight for embedding with cool white light  
Faretto LED Sunled ad incasso con luce fredda  
LED-Einbauleuchte Sunled mit kaltem Licht



Lumen	WATT	Colour	LEDs	Cod.	
300 lm	3,8 W	6.000 K	15	51450	25

Plastic / Tecnoplastica / Kunststoff



Sunled LED semi-embedded spotlight with cool light  
Faretto LED Sunled a semincasso con luce fredda  
LED-Einbauleuchte Sunled mit kaltem Licht



Lumen	WATT	Colour	LEDs	Cod.	
300 lm	3,8 W	6.500 K	15	51452	25

Plastic / Tecnoplastica / Kunststoff



Sunled LED surface spotlight with cool light  
Faretto LED Sunled da superficie con luce fredda  
LED-Anbauleuchte Sunled mit kaltem Licht



Lumen	WATT	Colour	LEDs	Cod.	
300 lm	3,8 W	6.000 K	15	51451	25

Plastic / Tecnoplastica / Kunststoff



Sagittarius LED lamp over mirror 40 mm, cool light  
 Applique LED per specchio da bagno Sagittarius 40 mm a luce fredda  
 LED-Anbauleuchte für Badspiegel Sagittarius 40 mm mit kaltem Licht

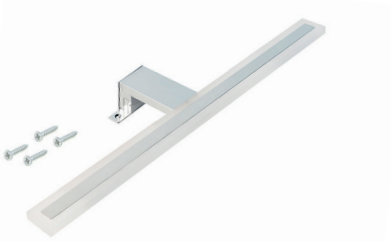


A	Lumen	WATT	Colour	LEDs	Cod.		
40	380 lm	5 W	6.000 K	30	51457	11	1

Aluminium and plastic / Alluminio eteplastica / Aluminium und Kunststoff



Sagittarius LED lamp over mirror, cool light  
 Applique LED per specchio da bagno Sagittarius, luce fredda  
 LED-Anbauleuchte für Badspiegel Sagittarius mit kaltem Licht

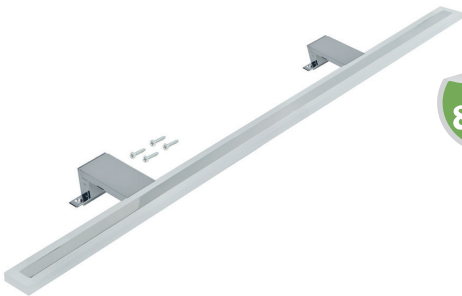


A	Lumen	WATT	Colour	LEDs	Cod.		
300	550 lm	7 W	6.000 K	60	51458	11	1
450	530 lm	7 W	6.000 K	60	51459	11	1

Aluminium and plastic / Alluminio eteplastica / Aluminium und Kunststoff



Sagittarius LED lamp over mirror 800 mm, cool light  
 Applique LED per specchio da bagno Sagittarius 800 mm a luce fredda  
 LED-Anbauleuchte für Badspiegel Sagittarius 800 mm mit kaltem Licht



A	Lumen	WATT	Colour	LEDs	Cod.		
800	900 lm	14 W	6.000 K	120	51461	11	1

Aluminium and plastic / Alluminio eteplastica / Aluminium und Kunststoff



Aquarius LED lamp over mirror, cool light  
 Applique LED per specchio da bagno Aquarius, luce fredda  
 LED-Anbauleuchte für Badspiegel Aquarius mit kaltem Licht

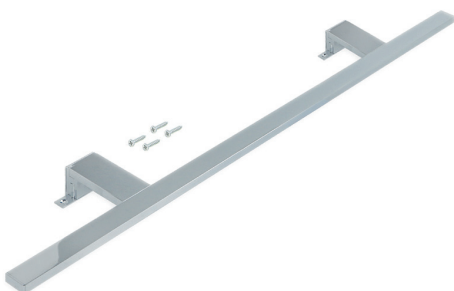


A	Lumen	WATT	Colour	LEDs	Cod.		
300	520 lm	7 W	6.000 K	60	51453	11	1
450	480 lm	7 W	6.000 K	60	51454	11	1

Aluminium and plastic / Alluminio eteplastica / Aluminium und Kunststoff



Aquarius LED lamp over mirror 800 mm, cool light  
 Applique LED per specchio da bagno Aquarius 800 mm a luce fredda  
 LED-Anbauleuchte für Badspiegel Aquarius 800 mm mit kaltem Licht



A	Lumen	WATT	Colour	LEDs	Cod.		
800	800 lm	14 W	6.000 K	120	51456	11	1

Aluminium and plastic / Alluminio eteplastica / Aluminium und Kunststoff



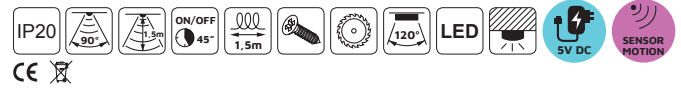


Castor Hanging wardrobe bar with LED light, removable battery and motion sensor  
 Barra appendibili per armadi Castor con luce LED, batteria rimovibile e sensore di movimento  
 Schrankstange Castor mit LED-Licht, herausnehmbarer Batterie und Bewegungssensor



A	Lumen	WATT	Colour	LEDs	Cod.			
558	30 lm	0,6 W	4.000 K	30	<b>50740</b>	<b>13</b>	<b>62</b>	1
708	35 lm	0,7 W	4.000 K	45	<b>50741</b>	<b>13</b>	<b>62</b>	1
858	45 lm	0,9 W	4.000 K	60	<b>50742</b>	<b>13</b>	<b>62</b>	1
1.008	50 lm	1 W	4.000 K	75	<b>50743</b>	<b>13</b>	<b>62</b>	1
1.158	55 lm	1,2 W	4.000 K	90	<b>50744</b>	<b>13</b>	<b>62</b>	1

Aluminium and plastic / Alluminio eteoplastica / Aluminium und Kunststoff



Polux Hanging wardrobe bar with LED light with motion sensor  
 Barra appendibili per armadi Polux con luce LED con sensore di movimento  
 Schrankstange Polux mit LED-Licht mit Bewegungssensor



A	Lumen	WATT	Colour	LEDs	Cod.			
558	125 lm	2,6 W	4.000 K	32	<b>50745</b>	<b>62</b>		1
708	160 lm	3,3 W	4.000 K	41	<b>50746</b>	<b>62</b>		1
858	190 lm	4 W	4.000 K	50	<b>50747</b>	<b>62</b>		1
1.008	230 lm	4,8 W	4.000 K	59	<b>50748</b>	<b>62</b>		1
1.158	260 lm	5,5 W	4.000 K	68	<b>50749</b>	<b>62</b>		1

Aluminium and plastic / Alluminio eteoplastica / Aluminium und Kunststoff



Constant-voltage converter for LED lights  
 Convertitore di tensione costante per illuminazioni LED  
 Konstant-Spannungswandler für LED-Leuchtkörper



WATT	A	B	C	Input	Output	Cod.		
6 W	17	96	41	100-240V AC - 50-60Hz	12V DC	<b>70809</b>	<b>20</b>	10
15 W	17	96	41	100-240V AC - 50-60Hz	12V DC	<b>70014</b>	<b>20</b>	10
30 W	31	120	53	100-240V AC - 50-60Hz	12V DC	<b>70013</b>	<b>20</b>	10
50 W	31	120	53	100-240V AC - 50-60Hz	12V DC	<b>50084</b>	<b>20</b>	10
72 W	38	153	60	100-240V AC - 50-60Hz	12V DC	<b>50085</b>	<b>20</b>	10

Plastic / Tecnoplastica / Kunststoff



Constant-voltage converter for LED lights  
 Convertitore di tensione costante per illuminazioni LED  
 Konstant-Spannungswandler für LED-Leuchtkörper



WATT	A	B	C	Input	Output	Cod.		
100 W	30	129	97	100-240V AC - 50-60Hz	12V DC	<b>52033</b>	<b>20</b>	5
200 W	30	215	115	100-240V AC - 50-60Hz	12V DC	<b>52034</b>	<b>20</b>	5

Steel / Acciaio / Stahl



Diflex LED batten with touch sensor and cool light  
 Applique LED Diflex con sensore touch a luce fredda  
 LED-Anbauleuchte Diflex mit Touch-Sensor und kaltem Licht



A	Lumen	WATT	Colour	LEDs	Cod.		
350	101 lm	2,4 W	6.000 K	27	<b>50727</b>	<b>62</b>	1
550	182 lm	4,3 W	6.000 K	54	<b>50728</b>	<b>62</b>	1

Aluminium and plastic / Alluminio etecnoplastica / Aluminium und Kunststoff

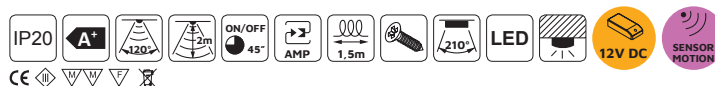


Persei LED batten with movement sensor and cool white light  
 Applique LED Persei con sensore di movimento a luce fredda  
 LED-Anbauleuchte Persei mit Bewegungssensor und kaltem Licht



A	Lumen	WATT	Colour	LEDs	Cod.		
395	225 lm	2,7 W	6.000 K	27	<b>50720</b>	<b>62</b>	1
595	305 lm	4,2 W	6.000 K	42	<b>50721</b>	<b>62</b>	1
395	211 lm	2,7 W	3.000 K	27	<b>50722</b>	<b>62</b>	1
595	286 lm	4,2 W	3.000 K	42	<b>50726</b>	<b>62</b>	1

Aluminium and plastic / Alluminio etecnoplastica / Aluminium und Kunststoff

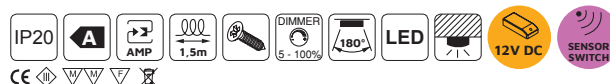


Kuma LED reading light, square, flexible arm, 2 USB and voltage converter  
 Applique quadrato Kuma con braccio flessibile e 2 porte USB, e convertitore di tensione costante  
 LED-Wandleuchte quadratisch Kuma mit flexiblem Arm, 2 USB-Anschlüssen und Konstant-Spannungswandler



Lumen	WATT	Colour	LEDs	Cod.		
285 lm	5 W	4.000 K	24	<b>50147</b>	<b>15</b>	<b>17</b>
285 lm	5 W	4.000 K	24	<b>50148</b>	<b>15</b>	<b>17</b>

Plastic / Tecnoplastica / Kunststoff

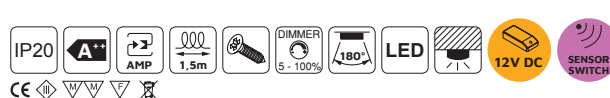


Kuma LED reading light with flexible arm, 2 USB ports and voltage converter  
 Applique rotonda Kuma con braccio flessibile, 2 porte USB e convertitore di tensione costante  
 LED-Wandleuchte rund Kuma mit flexiblem Arm, 2 USB-Anschlüssen und Konstant-Spannungswandler



Lumen	WATT	Colour	LEDs	Cod.		
150 lm	2,1 W	4.000 K	16	<b>50146</b>	<b>15</b>	<b>17</b>
150 lm	2,1 W	4.000 K	16	<b>50149</b>	<b>15</b>	<b>17</b>

Plastic / Tecnoplastica / Kunststoff



Hidra LED spotlight ultra-slim with 15W power converter  
 Luminarie LED estrafine Hidra con convertitore da 15W  
 Extraschmale LED-Einbauleuchten Hidra mit Konverter 15W



Lumen	WATT	Colour	LEDs	Cod.	
130 lm	2 W	6.000 K	24	50736 : 25	3

Aluminium and plastic / Alluminio etecnoplastica / Aluminium und Kunststoff



Merak LED spotlight with 6W power converter  
 Luminarie LED Merak con convertitore da 6W  
 LED-Anbauleuchte Merak mit Konverter 6W



Lumen	WATT	Colour	LEDs	Cod.	
60 lm	0,8 W	4.000 K	1	50735 : 25	6

Plastic / Tecnoplastica / Kunststoff



Polaris directional LED lights with 15W power converter  
 Luminarie LED orientabili Polaris con convertitore da 15W  
 LED-Einbauleuchte ausrichtbar Polaris mit Konverter 15W



Lumen	WATT	Colour	LEDs	Cod.	
95 lm	1,2 W	4.000 K	1	50738 : 62	6

Aluminium / Alluminio / Aluminium



Alcor embeddable LED lights with 15W power converter  
 Luce LED ad incasso Alcor con convertitore da 15W  
 LED-Einbauleuchte Alcor mit Konverter 15W



Lumen	WATT	Colour	LEDs	Cod.	
95 lm	1,2 W	4.000 K	1	50739 : 62	6

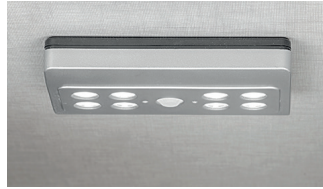
Aluminium / Alluminio / Aluminium



## Battery operated LED lights

### Illuminazione LED con batteria / LED-Beleuchtung mit Batteriebetrieb

Draco battery-powered LED light with movement sensor and cool light  
 Luce LED a batterie Draco con sensore di movimento e luce fredda  
 LED-Anbauleuchte batteriebetrieben Draco mit Bewegungssensor und kaltem Licht



Lumen	WATT	Colour	LEDs	Cod.	
45 lm	0,48 W	6.500 K	8	50530	25

Plastic / Tecnoplastica / Kunststoff



Drawled Battery-powered LED light for inside drawers with vibration sensor and cool light  
 Luce LED a batterie per interno di cassetti Drawled con sensore a vibrazione e luce fredda  
 LED-Einbauleuchte batteriebetrieben für Schubladeninnenseiten Drawled mit Vibrationsensor und kaltem Licht



Lumen	WATT	Colour	LEDs	Cod.	
28 lm	0,6 W	7.000 K	4	50063	25

Plastic / Tecnoplastica / Kunststoff



Phoenix LED light with movement sensor and cool light  
 Luce LED a batterie Phoenix con sensore di movimento e luce fredda  
 LED-Anbauleuchte batteriebetrieben Phoenix mit Bewegungssensor und kaltem Licht



Lumen	WATT	Colour	LEDs	Cod.	
30 lm	0,6 W	7.000 K	6	50041	25

Plastic / Tecnoplastica / Kunststoff



Kraz Rechargeable LED light with movement sensor  
 Luminaria LED ricaricabile Kraz con sensore di movimento  
 LED-Anbauleuchte aufladbar Kraz mit Bewegungssensor



Lumen	WATT	Colour	LEDs	Cod.	
85 lm	1 W	4.000 K	9	50286	25

Plastic / Tecnoplastica / Kunststoff



Crater Rechargeable LED light with movement sensor  
 Luminaria LED ricaricabile Crater con sensore di movimento  
 LED-Anbauleuchte aufladbar Crater mit Bewegungssensor



Lumen	WATT	Colour	LEDs	Cod.	
110 lm	1 W	4.000 K	28	50239	25

Plastic / Tecnoplastica / Kunststoff



## Switches and sensors Interruttori e sensori / Schalter und Sensoren

Switch for embedding  
Interruttore da incasso  
Lichtschalter zum Einbetten



Cod.	15	17	25
96381	15	17	1
50710	15	17	10

Plastic / Tecnoplastica / Kunststoff

CE

Wardrobe door switch  
Interruttore per anta di armadio  
Lichtschalter für Schranktür



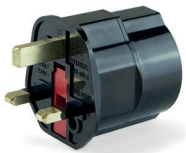
Cod.	15	17	25
96424	15	17	1
50709	15	17	10

Plastic / Tecnoplastica / Kunststoff

CE

## Chargers and connectors Caricatori e connettori / Ladegeräte und Stecker

EU plug adapted for the UK  
Adattatore spina UE per UK  
Zwischenstecker für Anschlüsse EU zu GB

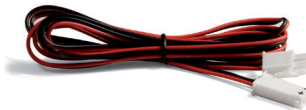


Cod.	17	25
50106	17	1

Plastic / Tecnoplastica / Kunststoff

CE

12V AMP extension cable  
Prolunga AMP 12V  
12V AMP Verlängerungskabel



Cod.	17	25
92698	17	1

Plastic / Tecnoplastica / Kunststoff

AMP

CE

UK plug adapted for the EU  
Adattatore spina UK per UE  
Zwischenstecker für Anschlüsse GB zu EU



Cod.	17	25
50107	17	1

Plastic / Tecnoplastica / Kunststoff

CE

Plug Round connector with 2 USB ports for embedding into furniture  
Connettore rotondo Plugy con 2 porte USB a incasso nel mobile  
USB-Ladeanschluss rund Plugy mit 2 USB-Anschlüssen zum Einbetten in Möbel



Input	Output	Cod.	14	25	
12V DC	5V DC	50706	14	25	1

Plastic / Tecnoplastica / Kunststoff

AMP

CE



Plug Square connector with 2 USB ports for embedding into furniture  
Connettore quadrato Plugy con 2 porte USB ad incastro nel mobile  
Ladegerät quadratisch Plugy mit 2 USB-Anschlüssen zur Einbettung in Möbel



Input	Output	Cod.	14	25	
12V DC	5V DC	50055	14	25	1

Plastic / Tecnoplastica / Kunststoff

AMP

CE

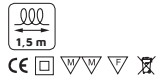


Airtop wireless charger for mobiles  
 Caricatore wireless per cellulari Airtop  
 Drahtloses Ladegerät für Smartphones Airtop



Cod.			
50175	17	1	

Plastic / Tecnoplastica / Kunststoff

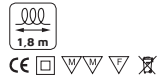


Vertikal Retractable 3 plug connector with 2 USB for embedding  
 Torretta con 3 prese Vertikal con 2 usb, a scomparsa, EU  
 3-Fach-Steckdose Vertikal mit 2 USB-Anschlüssen, versenkbar, ausziehbar



Type	Cod.			
EU	50099	25	1	
UK	50096	25	1	

Plastic / Tecnoplastica / Kunststoff



Multi-plug connector Atom for embedding in desk  
 Multipresa Atom da incasso nella scrivania  
 Mehrfachstecker Atom für Schreibtisch



Type	Cod.			
EU	50297	14	25	1

Steel, plastic and zamak / Acciaio, tecnoplastica e zama / Stahl, Kunststoff und zamak



Multi-plug connector Atom for embedding in desk  
 Multipresa Atom da incasso nella scrivania  
 Mehrfachstecker Atom für Schreibtisch



Type	Cod.			
EU	50295	14	25	1

Steel, plastic and zamak / Acciaio, tecnoplastica e zama / Stahl, Kunststoff und zamak



## Cable organizers Passacavi / Kabelkanäle

Quadrum desk cable grommet, rectangular  
Passacavi da tavolo Quadrum, rettangolare  
Kabeldurchlass Quadrum für Tische, rechteckig

L	Cod.			
160 x 80	<b>50100</b>	62		1
160 x 80	<b>50704</b>	62		5
269 x 80	<b>50124</b>	62		1
269 x 80	<b>50132</b>	62		5

Aluminium / Alluminio / Aluminium



Plaswire desk cable grommet  
Passacavi da tavolo Plaswire  
Kabeldurchlass Plaswire für Tische

L	Cod.				
85 x 85	<b>50125</b>	11	12	14	1
85 x 85	<b>50472</b>	11	12	14	5

Plastic / Tecnoplastica / Kunststoff



Plaswire desk cable grommet  
Passacavi da tavolo Plaswire  
Kabeldurchlass Plaswire für Tische

L	Cod.				
152 x 61	<b>50126</b>	11	12	14	1
152 x 61	<b>50473</b>	11	12	14	5

Plastic / Tecnoplastica / Kunststoff



Circum round cable grommet  
Passacavi Circum  
Kabeldurchlass Circum, rund



Ø	Cod.				
60	<b>50067</b>	11	64		1
60	<b>50708</b>	11	64		8
80	<b>50225</b>	11	64		1
80	<b>50732</b>	11	64		7

Zamak / Zama / Zamak

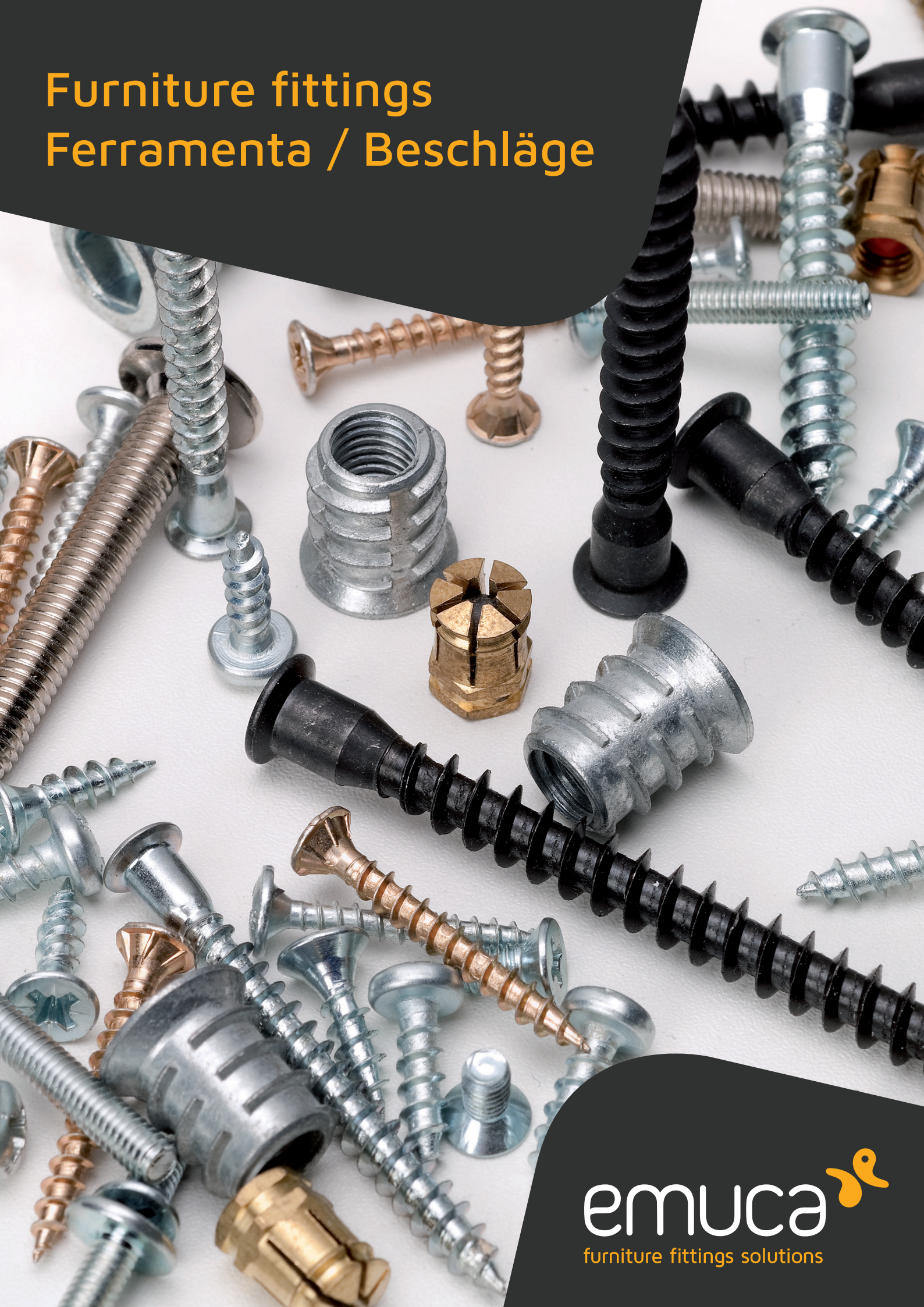
Round cable grommet  
Passacavi circolare  
Kabeldurchlass, rund



Ø	Cod.				
60	<b>31963</b>	15	17	21	20
80	<b>31964</b>	-	17	21	4

Plastic / Tecnoplastica / Kunststoff

# Furniture fittings Ferramenta / Beschläge





X91 Hinge with soft close, 100° opening, plates for screwing  
Cerniera a scodellino X91, chiusura ammortizzata, basette con regolazione eccentrica per vite  
Topfscharnier X91, sanftes Schließen, Öffnung 100°, Montageplatte zum Schrauben



Size	Cod.			Cod.		
	10133	07	2	10113	07	20
	10134	07	2	10114	07	20
	10135	07	2	10115	07	20

Steel / Acciaio / Stahl

X91 Hinge, soft close, 100° opening, Euro screw  
Cerniera a scodellino X91, chiusura ammortizzata, apertura 100°, basette Euro  
Topfscharnier X91, sanftes Schließen, Öffnung 100°, Montageplatte Euro



Size	Cod.			Cod.		
	10136	07	2	10116	07	20
	10137	07	2	10117	07	20
	10138	07	2	10118	07	20

Steel / Acciaio / Stahl

X91N Hinge, 100° opening, plates for screwing  
Cerniera a scodellino X91N, apertura 100°, basetta a vite  
Topfscharnier X91N, Öffnung 100°, Montageplatte zum Schrauben



Size	Cod.		
	10110	07	20
	10111	07	20
	10112	07	20

Steel / Acciaio / Stahl

X91N Hinge, 100° opening, with Euro screw  
Cerniera a scodellino X91N, apertura 100°, basette Euro  
Topfscharnier X91N, Öffnung 100°, Montageplatte Euro



Size	Cod.		
	10124	07	20
	10125	07	20
	10126	07	20

Steel / Acciaio / Stahl

X91 Hinge, soft close, 90° angular arm, plates for screwing  
 Cerniera a scodellino X91, chiusura ammortizzata, braccio angolare 90°, basetta a vite  
 Topfscharnier X91, sanftes Schließen, Winkelarm 90°, Montageplatte zum Schrauben



Angle	Cod.		
90°	10146	07	2
90°	10120	07	10

Steel / Acciaio / Stahl



X91 Hinge, soft close, 90° angular arm, Euro screw  
 Cerniera a scodellino X91, chiusura ammortizzata, braccio angolare 90°, basetta Euro  
 Topfscharnier X91, sanftes Schließen, Winkelarm 90°, Montageplatte Euro



Angle	Cod.		
90°	10148	07	2
90°	10123	07	10

Steel / Acciaio / Stahl



X91 Hinge, soft close, 45° angular arm, plates for screwing  
 Cerniera a scodellino X91, chiusura ammortizzata, braccio angolare 45°, basetta a vite  
 Topfscharnier X91, sanftes Schließen, Winkelarm 45°, Montageplatte zum Schrauben



Angle	Cod.		
45°	10145	07	2
45°	10119	07	10

Steel / Acciaio / Stahl



X91 Hinge, soft close, 45° angular arm, Euro screw  
 Cerniera a scodellino X91, chiusura ammortizzata, braccio angolare 45°, basetta Euro  
 Topfscharnier X91, sanftes Schließen, Winkelarm 45°, Montageplatte Euro



Angle	Cod.		
45°	10147	07	2
45°	10122	07	10

Steel / Acciaio / Stahl



X91 Hinge, soft close, 165° opening, plates for screwing  
 Cerniera a scodellino X91, chiusura ammortizzata, apertura 165°, basetta a vite  
 Topfscharnier X91, sanftes Schließen, Öffnung 165°, Montageplatte zum Schrauben



Size	Cod.			Cod.		
	10149	07	2	10127	07	20
	10150	07	2	10128	07	20
	10151	07	2	10129	07	20

Steel / Acciaio / Stahl

X91 Hinge, soft close, 165° opening, Euro screw  
 Cerniera a scodellino X91, chiusura ammortizzata, apertura 165°, basetta Euro  
 Topfscharnier X91, sanftes Schließen, Öffnung 165°, Montageplatte Euro



Size	Cod.			Cod.		
	10152	07	2	10130	07	20
	10153	07	2	10131	07	20
	10154	07	2	10132	07	20

Steel / Acciaio / Stahl

X95 Hinge, 110° opening and plates for screwing  
 Cerniera X95, apertura 110° e basetta a vite  
 Topfscharnier X95, Öffnung 110°, Montageplatte zum Schrauben



Size	Cod.		
	<b>10174</b>	<b>07</b>	20
	<b>10175</b>	<b>07</b>	20
	<b>10176</b>	<b>07</b>	20

Steel / Acciaio / Stahl

X95 Hinge, 110° opening and Euro screws  
 Cerniera X95 con apertura 110° e basetta Euro  
 Topfscharnier X95, Öffnung 110°, Montageplatte Euro



Size	Cod.		
	<b>10177</b>	<b>07</b>	20
	<b>10178</b>	<b>07</b>	20
	<b>10179</b>	<b>07</b>	20

Steel / Acciaio / Stahl

C50 Hinge, 105° opening and plates for screwing  
 Cerniera C50 apertura 105° e basetta a vite  
 Topfscharnier C50, Öffnung 105°, Montageplatte zum Schrauben



Size	Cod.		Cod.			
	<b>10187</b>	<b>07</b>	2	<b>10186</b>	<b>07</b>	20

Steel / Acciaio / Stahl

X10 Hinge, 95° opening, plates for screwing  
 Cerniera a scodellino X10, apertura 95°, basette a vite  
 Topfscharnier X10, Öffnung 95°, Montageplatte zum Schrauben



Size	Cod.		
	<b>10161</b>	<b>07</b>	20
	<b>10162</b>	<b>07</b>	20
	<b>10163</b>	<b>07</b>	20

Steel / Acciaio / Stahl

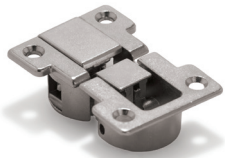
X 10 Hinge, 95° opening, Euro screw  
 Cerniera a scodellino X10, apertura 95°, basette Euro  
 Topfscharnier X10, Öffnung 95°, Montageplatte Euro



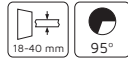
Size	Cod.		
	<b>10164</b>	<b>07</b>	20
	<b>10165</b>	<b>07</b>	20
	<b>10166</b>	<b>07</b>	20

Steel / Acciaio / Stahl

Hinge Ankor  
Cerniera Ankor  
Topfscharnier Ankor



Cod.			
10188	07	2	
Zamak / Zama / Zamak			



Hinge Secreter  
Cerniera Secreter  
Topfscharnier Secreter



Cod.			
10189	07	2	
Zamak / Zama / Zamak			

Batch hinges for glass door, inner edge  
Cerniera per anta in vetro, lato interno  
Glastürscharnier-Set, Innenkante

Cod.				
10158	11	64	1	
Zamak / Zama / Zamak				



Batch hinges for glass door, central part  
Cerniera per anta in vetro, ubicazione centrale  
Glastürscharnier-Set, Mitte

Cod.				
10159	11	64	1	
Zamak / Zama / Zamak				



Batch Interior hinge with cover for glass doors  
Cerniera interiore per porta in vetro  
Glastürscharnier-Set, Innenseite

Cod.				
10160	25	1		
Steel / Acciaio / Stahl				



## Locks and latches Serrature e chiusure / Schlösser und Verschlüsse

Cylinder lock for drawer  
Serratura per cassetto  
Zylinderschloss für Schublade



Cod.			
20312	11	1	
Zamak / Zama / Zamak			

Cylinder lock for glass door  
Serratura a cilindro per anta in vetro  
Zylinderschloss für Glastür



Cod.			
20310	11	1	
Zamak / Zama / Zamak			

Cylinder lock for glass door  
Serratura a cilindro per anta in vetro  
Zylinderschloss für Glastür



Cod.			
20311	11	1	
Zamak / Zama / Zamak			

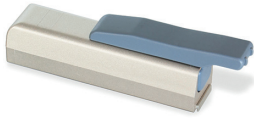
Revalock magnetic safety lock for doors and drawers  
Chiusura magnetica di sicurezza per mobile Revalock  
Magnetischer Sicherheitsverschluss für Möbel Revalock



Cod.			
89329	20	1	
Plastic / Tecnoplastica / Kunststoff			



Mildy shock absorber piston for hinged doors  
 Pistone ammortizzatore per ante Mildy  
 Türdämpfer für Scharnertüren Mildy



Cod.		
12759	24	10
Plastic / Tecnoplastica / Kunststoff		

Minidamp 2 Shock absorber pistons for hinged door  
 Pistone per porta a battente Minidamp 2  
 Türdämpfer für Scharnertüren Minidamp 2



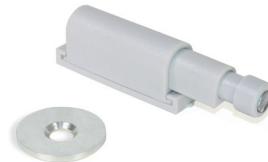
Cod.		
12750	21	10
Plastic / Tecnoplastica / Kunststoff		

Push Latch Latches for doors  
 Chiusura push per mobile Push Latch  
 Verschluss für Türen Push Latch



Cod.		
12779	21	10
Plastic / Tecnoplastica / Kunststoff		

Push Latch magnetic closing for doors  
 Chiusura magnetica per ante Push Latch  
 Magnetverschluss für Türen Push Latch



Cod.		
12778	21	10
Steel and plastic / Acciaio e tecnoplastica / Stahl und Kunststoff		

Push Latch Latches for doors  
 Chiusura push per mobile Push Latch  
 Verschluss für Türen Push Latch



Cod.		
12752	21	10
Plastic / Tecnoplastica / Kunststoff		

Push Latch magnetic closing for doors  
 Chiusura magnetica per ante Push Latch  
 Magnetverschluss für Türen Push Latch



Cod.		
12780	21	10
Steel and plastic / Acciaio e tecnoplastica / Stahl und Kunststoff		

Pushmatic Latches for doors  
 Chiusura push per mobile Pushmatic  
 Verschluss für Türen Pushmatic



Cod.		
12777	21	10
Plastic / Tecnoplastica / Kunststoff		



Magnetic closing for doors  
 Chiusura magnetica per ante  
 Magnetverschluss für Türen



Cod.		
12753	15	20
Steel and plastic / Acciaio e tecnoplastica / Stahl und Kunststoff		



Push Latch Latches for doors  
Chiusura push per mobile Push Latch  
Verschluss für Türen Push Latch



Cod. 				
12781	21	23	10	
Plastic / Tecnoplastica / Kunststoff				



Push Latch magnetic closing for doors  
Chiusura magnetica per ante Push Latch  
Magnetverschluss für Türen Push Latch



Cod. 				
12782	21	23	10	
Steel and plastic / Acciaio e tecnoplastica / Stahl und Kunststoff				



Push Latch Latches for doors  
Chiusura push per mobile Push Latch  
Verschluss für Türen Push Latch



Cod. 				
12783	21	23	10	
Plastic / Tecnoplastica / Kunststoff				



Push Latch magnetic closing for doors  
Chiusura magnetica per ante Push Latch  
Magnetverschluss für Türen Push Latch



Cod. 				
12784	21	23	10	
Steel and plastic / Acciaio e tecnoplastica / Stahl und Kunststoff				



Push Latch Latches for doors  
Chiusura push per mobile Push Latch  
Verschluss für Türen Push Latch

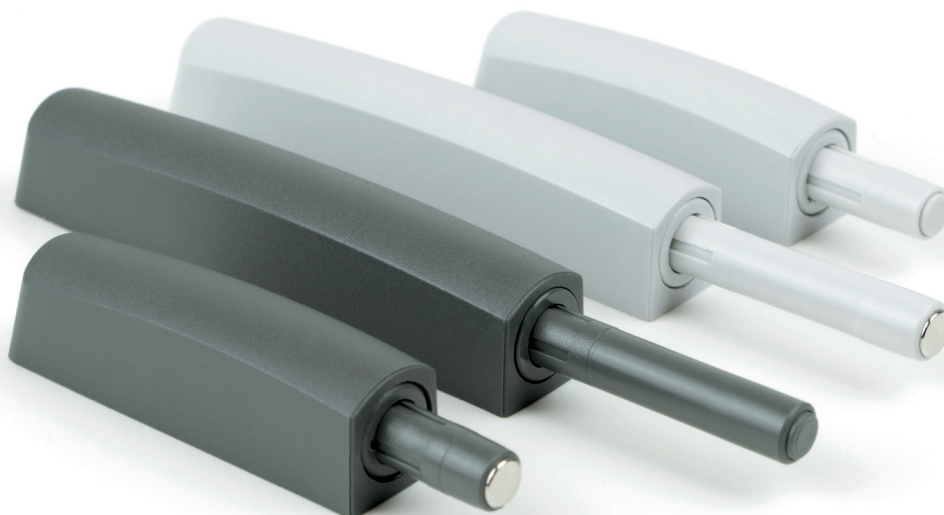


Cod. 				
12785	21	23	10	
Plastic / Tecnoplastica / Kunststoff				

Push Latch magnetic closing for doors  
Chiusura magnetica per ante Push Latch  
Magnetverschluss für Türen Push Latch



Cod. 				
12786	21	23	10	
Steel and plastic / Acciaio e tecnoplastica / Stahl und Kunststoff				



Fast Latch lock for furniture  
Chiusura a cricchetto per mobile  
Türschnäpper Fast Latch für Möbel



Cod.			
12788	15	4	
12754	15	10	

Steel and plastic / Acciaio e tecnoplastica / Stahl und Kunststoff

Silent latch for furniture  
Chiusura a battente silenziosa per mobile  
Leiser Türschnäpper für Möbel



Cod.			
12755	05	10	

Steel and plastic / Acciaio e tecnoplastica / Stahl und Kunststoff

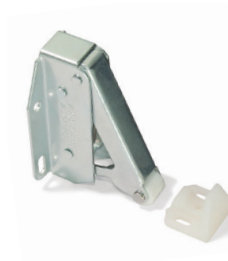
Fastener lever locks for furniture  
Chiusura a leva per mobile  
Hebelverschluss Spanner für Möbel



Cod.			
10155	05	10	

Steel / Acciaio / Stahl

Fast Latch lock for furniture  
Chiusura a cricchetto per mobile  
Türschnäpper Tip Latch für Möbel

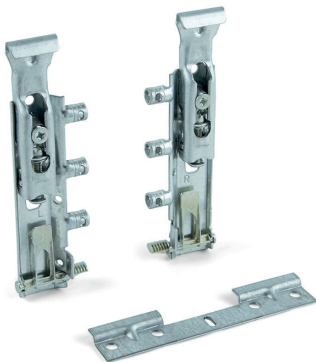


Cod.			
12787	05	10	

Steel and plastic / Acciaio e tecnoplastica / Stahl und Kunststoff

## Hangers for high units Appendiabiti per moduli alti / Aufhänger für hohe Module

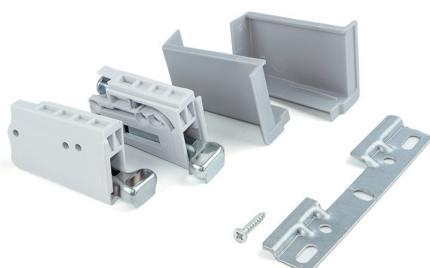
Levelup hidden wardrobe hangers with plate  
Reggipensile a scomparsa per anta di armadio Levelup con piastrina  
träger für hohe Module Levelup mit Flacheisen



Cod.			
40086	05	1	

Steel / Acciaio / Stahl

Hook hanger for high units  
Reggipensile per moduli alti Hook  
Aufhänger für hohe Module Hook



Cod.			
40267	21	1	

Steel and plastic / Acciaio e tecnoplastica / Stahl und Kunststoff



## Eccentrics and hooks Eccentrici e agganci / Exzenter und Haken

Luna Joining clamp for shelf supports, D. 20, 13 mm  
Giunzione per mensole Luna, D. 20, 13 mm  
Tablarverbinder für Regale Luna, D. 20 mm, 13 mm



bolt Ø x L	Cod.			
4,2 x 11	<b>40225</b>	<b>15</b>	<b>16</b>	20
6 x 9	<b>40226</b>	<b>15</b>	<b>16</b>	20

Steel and plastic / Acciaio e tecnoplastica /  
Stahl und Kunststoff

T15 cams and dowels kit with Fit bolts and caps  
Kit di eccentrici T15 con perni Fit e coperture  
Verbindergehäuse-Kit T15 mit Bolzen Fit und Abdeckungen



	Cod.			
13	<b>40268</b>	<b>15</b>		20
16	<b>40269</b>	<b>15</b>		20
19	<b>40270</b>	<b>15</b>		20

Steel, plastic and zamak / Acciaio,  
tecnoplasticae e zama / Stahl,  
Kunststoff und zamak

T15 Cams and dowels kit with bolts, D. 6 mm  
Kit di eccentrici T15 con perni D. 6 mm  
Verbindergehäuse-Kit T15 mit Bolzen D. 6 mm



	Cod.			
13	<b>40200</b>	<b>15</b>		20
16	<b>40202</b>	<b>15</b>		20
19	<b>40204</b>	<b>15</b>		20

Steel, plastic and zamak / Acciaio,  
tecnoplasticae e zama / Stahl,  
Kunststoff und zamak

T15 Cams and dowels kit with bolts and M6 bolt  
Kit di eccentrici T15 con perni e bussole  
Verbindergehäuse-Kit T15 mit Bolzen und Muttern M6



	Cod.			
13	<b>40201</b>	<b>15</b>		20
16	<b>40203</b>	<b>15</b>		20
19	<b>40205</b>	<b>15</b>		20

Steel, plastic and zamak / Acciaio,  
tecnoplasticae e zama / Stahl,  
Kunststoff und zamak

Cams and dowels kit and bolt M8  
Kit eccentrici Big con bussole e perni M8  
Verbindergehäuse-Kit Big mit Bolzen und Muttern M8



Ø	Cod.			
35	<b>40206</b>	<b>15</b>		10

Steel, plastic and zamak / Acciaio,  
tecnoplasticae e zama / Stahl,  
Kunststoff und zamak

Concealed hinge joining system kit, D. 35 mm and M8 bolts  
Kit aggancio di unione D. 35 mm, e bussola M8  
Tablarverbinder-Kit D. 35 mm und Muttern M8



Ø	Cod.			
35	<b>40207</b>	<b>01</b>		10

Steel, plastic and zamak / Acciaio,  
tecnoplasticae e zama / Stahl,  
Kunststoff und zamak

Fix concealed hinge joining system D. 20 x 12.5 mm and D. 6 mm bolts  
Kit scodellino di unione Fix D. 20 x 12,5 mm e perni D. 6 mm  
Haken für die Befestigung von Regalen Fix D. 20 x 12.5 mm und Bolzen D. 6 mm



bolt Ø x L	Cod.			
6 x 8	<b>40272</b>	<b>07</b>		20
6 x 11	<b>40273</b>	<b>07</b>		20

Steel, plastic and zamak / Acciaio,  
tecnoplasticae e zama / Stahl,  
Kunststoff und zamak

Block System hooks for fastening shelves H 12 mm  
Agganci per fissaggio di mensole Block System H 12 mm  
Haken für die Befestigung von Regalen Block System H. 12 mm



H	Cod.			
12	<b>40271</b>	<b>15</b>		100

Plastic / Tecnoplastica / Kunststoff



Felt pads for furniture  
 Feltrini adesivi per mobile  
 Selbstklebende Möbelgleiter aus Filz

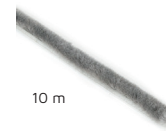
Emuca self-adhesive dust excluder for doors and windows  
 Guarnizione a spazzola antipolvere autoadesiva Emuca per ante e finestre  
 Selbstklebender Abdichtungstreifen mit Bürste für Türen und Fenster



Un.	Size	Cod.	16	1	Un.	Size	Cod.	16	10
150	Ø 16	20380	16	1	1.500	Ø 16	20211	16	10
150	Ø 20	20381	16	1	1.500	Ø 20	20212	16	10
108	Ø 24	20382	16	1	1.080	Ø 24	20213	16	10
63	Ø 30	20383	16	1	630	Ø 30	20214	16	10
36	Ø 34	20384	16	1	360	Ø 34	20215	16	10
36	Ø 40	20385	16	1	360	Ø 40	20216	16	10
150	20 x 20	20386	16	1	1.500	20 x 20	20217	16	10
96	25 x 25	20387	16	1	960	25 x 25	20218	16	10
63	30 x 30	20388	16	1	630	30 x 30	20219	16	10
3	100 x 250	20389	16	1	30	100 x 250	20220	16	10

Fibre / Fibra / Faser

Fibre / Fibra / Faser



10 m

H	Cod.	21	1
7	70893	21	1
9	70894	21	1
17	70895	21	1

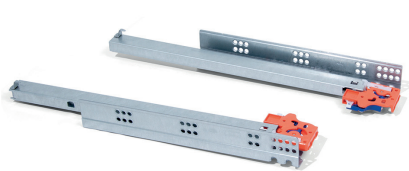
Plastic / Tecnoplastica / Kunststoff



**Drawer slides**  
**Guide per cassetti / Schubladenführungen**

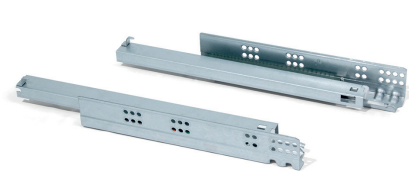
Set of Slippe Concealed drawer runners, soft closing, total extraction with hook  
 Guide a scomparsa per cassetti Slippe, a rotelle, a chiusura soft, estrazione totale e aggancio  
 Satz versteckte Führungen Slippe für Schublade, Rollschub, sanftes Schließen, Vollauszug, zum Einhängen

Set of Slippe concealed drawer runners, soft closing, total extraction  
 Guide a scomparsa per cassetti Slippe, a rotelle, a chiusura soft, estrazione totale  
 Satz versteckte Führungen Slippe für Schublade, Rollschub, sanftes Schließen, Vollauszug



Depth	Cod.	05	1
290	40026	05	1
340	40027	05	1
390	40028	05	1
440	40029	05	1
490	40030	05	1
540	40084	05	1
590	40085	05	1

Steel / Acciaio / Stahl



Depth	Cod.	05	1
240	40081	05	1
290	41041	05	1
340	41042	05	1
390	41043	05	1
440	41044	05	1
490	41045	05	1
540	40082	05	1
590	40083	05	1

Steel / Acciaio / Stahl



Set of Slippe concealed drawer runners, total extraction, push system  
 Guide a scomparsa per cassetti Slippe, a rotelle, chiusura soft, estrazione totale, sistema push  
 Satz versteckter Führungen Slippe für Schubladen, Rollschub, Vollauszug, Push-System

Set of Slippe concealed drawer runners, partial extraction, push system  
 Guide a scomparsa per cassetti Slippe, a rotelle, chiusura soft, estrazione parziale, sistema push  
 Satz versteckte Führungen Slippe für Schubladen, Rollschub, Teilauszug, Push-System



Depth	Cod.	05	1
240	30020	05	1
290	30021	05	1
340	30022	05	1
390	30023	05	1
440	30024	05	1
490	30025	05	1

Steel / Acciaio / Stahl



Depth	Cod.	05	1
240	41030	05	1
290	41031	05	1
340	41032	05	1
390	41033	05	1
440	41034	05	1
490	41035	05	1

Steel / Acciaio / Stahl



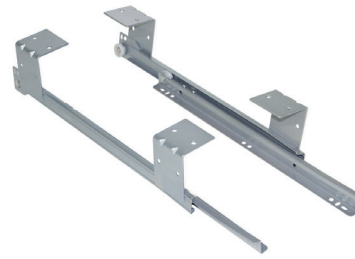
Set of Silver concealed drawer runners, soft close, partial extraction  
 Guide a scomparsa per cassetti Silver, a rotelle, chiusura soft, estrazione parziale  
 Satz versteckte Führungen für Schubladen Silver, Rollschub, sanftes Schließen, Teilauszug



Depth	Cod.			
240	30190	05	05	1
290	30191	05	05	1
340	30192	05	05	1
390	30193	05	05	1
440	30194	05	05	1
490	30195	05	05	1

Steel / Acciaio / Stahl

Set of ball bearing keyboard runners in steel  
 Guida portatastiera a rotelle in acciaio  
 Satz Rollenführungen für Tastatur, Stahl



Cod.			
30260	25	05	1

Steel / Acciaio / Stahl

Set of ball bearing drawer runner T30 with partial extraction  
 Guide per cassetti, a rotelle, ad estrazione parziale T30  
 Satz Führungen für Schubladen, Rollschub, nach unten schließend, mit Teilauszug T30



L	Cod.			
500	43890	12	14 25	1
550	43891	12	14 25	1
600	43892	12	14 25	1
800	43893	12	14 25	1
250	30196	12	14 25	5
300	30076	12	14 25	5
350	30077	12	14 25	5
400	30078	12	14 25	5
450	30079	12	14 25	5
500	30080	12	14 25	5
550	30197	12	14 25	5
600	30198	12	14 25	5
800	30199	12	14 25	5

Steel / Acciaio / Stahl

Soft closing system for drawer with T30 ball bearing runners  
 Meccanismo di chiusura soft per cassetti con guide a rotelle T30  
 Dämpfungssystem für Schubladen mit Rollschubführungen T30



L	Cod.			
250 - 300	30429	21	25	2
350 - 800	30430	21	25	2

Plastic / Tecnoplastica / Kunststoff



Set of ball bearing drawer runner, total extraction, soft close, 45 mm  
 Guide per cassetti, a sfera, chiusura soft, estrazione totale, 45 mm  
 Satz Führungen für Schublade, Kugelauszug, Vollauszug, sanftes Schließen, 45 mm



L	Cod.				L	Cod.			
300	43015	05	05	1	300	30510	05	05	5
350	43016	05	05	1	350	30511	05	05	5
400	43017	05	05	1	400	30512	05	05	5
450	43018	05	05	1	450	30513	05	05	5
500	43019	05	05	1	500	30514	05	05	5
550	43020	05	05	1	550	30518	05	05	5
600	43021	05	05	1	600	30519	05	05	5
650	43022	05	05	1	650	30591	05	05	5

Steel / Acciaio / Stahl

Steel / Acciaio / Stahl

Set of ball bearing drawer runner, total extraction, 45 mm, with brackets  
 Guide per cassetti, a sfera, estrazione totale, 45 mm, con squadra  
 Satz Führungen für Schubladen, Kugelauszug, Vollauszug, 45 mm, mit Winkeln



L	Cod.			
300	43004	05	05	1
350	43005	05	05	1
400	43006	05	05	1
450	43007	05	05	1
500	43008	05	05	1
600	43009	05	05	1

Steel / Acciaio / Stahl

Set of ball bearing runners with total extraction, height 45 mm  
 Guide per cassetti, a sfera, ad estrazione totale, 45 mm  
 Satz Führungen für Schubladen, Kugelvollauszug, 45 mm



L	Cod.			
250	42240	05		1
300	41771	05		1
350	41772	05		1
400	41773	05		1
450	41774	05		1
500	41775	05		1
600	41776	05		1
650	41777	05		1
250	30431	05		5
300	30432	05		5
350	30433	05		5
400	30434	05		5
450	30435	05		5
500	30436	05		5
600	30437	05		5
650	30438	05		5

Steel / Acciaio / Stahl

Set of ball bearing drawer runner with partial extraction, 17 mm  
 Guide per cassetti, a sfera, ad estrazione parziale, 17 mm  
 Satz Führungen für Schubladen, Kugelteilauszug, 17 mm



L	Cod.			
182	30095	05		5
214	30096	05		5
246	30097	05		5
278	30098	05		5
310	30099	05		5
342	30100	05		5
374	30092	05		5
438	30093	05		5

Steel / Acciaio / Stahl

## Legs, feet and levellers Gambe, piedini e registrabili / Beine, Füße und Nivellierer

Adjustable table legs, D. 80 mm, Steel  
 Gambe per tavolo, D. 80 mm, Acciaio  
 Tischbein, D. 80 mm, Stahl



L	Cod.				
710	30481	11	25	51	1
870	30482	11	25	51	1
1.100	30483	11	25	51	1

Steel / Acciaio / Stahl

Adjustable legs with wheel and brake D. 60 mm  
 Gambe regolabili con rotella e freno D. 60 mm  
 Tischbein verstellbar mit Rolle und Bremse D. 60 mm



Cod.			
30616	25		1

Steel / Acciaio / Stahl

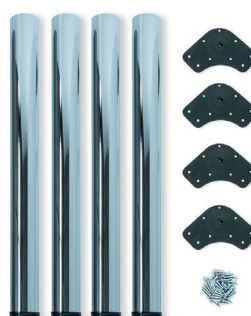
Adjustable table legs, D. 60 mm, Steel  
 Gambe per tavolo, D. 60 mm, Acciaio  
 Tischbein, D. 60 mm, Stahl



L	Cod.					
870	30480	11	14	25	51	1

Steel / Acciaio / Stahl

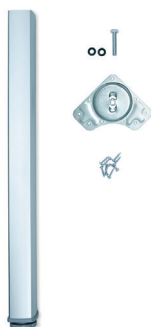
Adjustable table legs, D. 60 mm, Steel  
 Gambe per tavolo, D. 60 mm, Acciaio  
 Tischbeine, D. 60 mm, Stahl



L	Cod.						
710	20345	11	12	14	25	51	4
830	20342	11	-	-	25	51	4

Steel / Acciaio / Stahl

Adjustable table leg Fitwid  
 Gambe regolabili per tavolo Fitwid  
 Tischbein Fitwid, höhenverstellbar



L	Cod.		
710	32456	62	1
830	32458	62	1

Aluminium / Alluminio / Aluminium

Adjustable table legs, D. 80 mm, Aluminium  
 Gambe per tavolo, D. 80 mm, Alluminio  
 Tischbein höhenverstellbar, D. 80 mm, Aluminium



Ø	L	Cod.		
80	710	31124	62	1
80	830	31125	62	1
80	870	31217	62	1

Aluminium / Alluminio / Aluminium

Conus table leg, D. 60 mm, Steel  
 Gambe per tavolo Conus D. 60 mm in acciaio  
 Tischbein Conus D. 60 mm aus Stahl



Cod.		
30689	25	1

Steel and plastic /  
 Acciaio e tecnoplastica  
 / Stahl und Kunststoff



Adjustable feet Bone for furniture  
Piedino regolabile per mobile  
Nivellierfuß Bone für Möbel



H	Cod.			
100	<b>39995</b>	<b>17</b>		1
120	<b>39990</b>	<b>17</b>		1
150	<b>39994</b>	<b>17</b>		1
100	<b>20324</b>	<b>17</b>		10
120	<b>20325</b>	<b>17</b>		10
150	<b>20326</b>	<b>17</b>		10

Plastic / Tecnoplastica / Kunststoff

Adjustable feet Bone for furniture  
Piedino regolabile per mobile  
Nivellierfuß Bone für Möbel



H	Cod.			
100	<b>20224</b>	<b>17</b>		1
120	<b>20225</b>	<b>17</b>		1
150	<b>20226</b>	<b>17</b>		1

Plastic / Tecnoplastica / Kunststoff

Kit Adjustable feet for furniture Prisma  
Piedino regolabile per mobile Prisma  
Nivellierfuß für Möbel Prisma



H	Cod.			
90	<b>20317</b>	<b>62</b>		4
130	<b>20318</b>	<b>62</b>		4
150	<b>20319</b>	<b>62</b>		4

Aluminium and zamak / Alluminio e zama / Aluminium und zamak

Adjustable feet for furniture, D. 40 mm, Aluminium  
Piedino livellatore per mobile D. 40 mm, Alluminio  
Nivellierfuß für Möbel, D. 40 mm, Aluminium



H	Cod.			
140	<b>20343</b>	<b>63</b>		4
160	<b>20344</b>	<b>63</b>		4

Steel and plastic / Acciaio e tecnoplastica / Stahl und Kunststoff

Furniture feet Smartfeet  
Piedino per mobile Smartfeet  
Möbelfuß Smartfeet



H	Cod.				
100 - 110	<b>20233</b>	<b>11</b>	<b>12</b>	<b>14</b>	4
140 - 150	<b>20234</b>	<b>11</b>	<b>12</b>	<b>14</b>	4

Plastic / Tecnoplastica / Kunststoff

Furniture feet Smartfeet  
Piedino per mobile Smartfeet  
Möbelfuß Smartfeet



H	Cod.				
100 - 110	<b>20235</b>	<b>11</b>	<b>12</b>	<b>14</b>	2
140 - 150	<b>20236</b>	<b>11</b>	<b>12</b>	<b>14</b>	2

Plastic / Tecnoplastica / Kunststoff

Furniture feet Alumix 1  
Piedino per mobile Alumix 1  
Möbelfuß Alumix1



H	Cod.			
80	<b>20396</b>	<b>25</b>		4
100	<b>20397</b>	<b>25</b>		4
120	<b>20398</b>	<b>25</b>		4

Plastic / Tecnoplastica / Kunststoff

Furniture feet Alumix 8  
Piedino per mobile Alumix 8  
Möbelfuß Alumix8



H	Cod.			
12	<b>31188</b>	<b>25</b>		4
24	<b>31189</b>	<b>25</b>		4
12	<b>20394</b>	<b>25</b>		20
24	<b>20395</b>	<b>25</b>		20

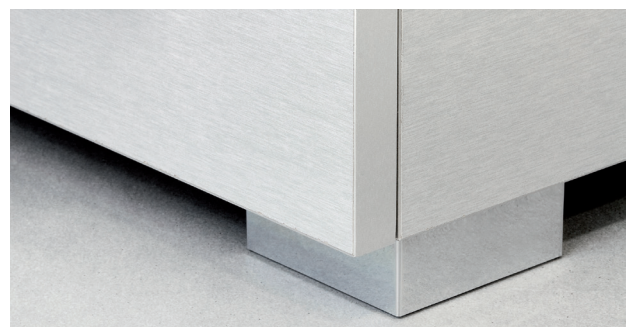
Plastic / Tecnoplastica / Kunststoff

Furniture feet Alumix 7  
Piedino per mobile Alumix 7  
Möbelfuß Alumix 7



H	Cod.			
100	<b>20230</b>	<b>25</b>		4
120	<b>20231</b>	<b>25</b>		4
150	<b>20232</b>	<b>25</b>		4
100	<b>20393</b>	<b>25</b>		20
120	<b>20391</b>	<b>25</b>		20
150	<b>20392</b>	<b>25</b>		20

Plastic / Tecnoplastica / Kunststoff



Adjustable feet for furniture with hexagonal base M6, with bolt  
 Piedino regolabile a base esagonale M6 con bussola  
 Nivellierfuß mit sechseckigem Fußteller, M6, mit Verstellerschraube



H	Cod.		
31	<b>20200</b>	<b>15</b>	20

Steel and plastic / Acciaio e tecnoplastica / Stahl und Kunststoff

Adjustable feet for furniture with hexagonal base M6  
 Piedino regolabile per mobile, base esagonale  
 Nivellierfuß für Möbel mit sechseckigem Fußteller, M6



H	Cod.		
20	<b>20201</b>	<b>05</b>	20
25	<b>20202</b>	<b>05</b>	20
30	<b>20203</b>	<b>05</b>	20

Steel and plastic / Acciaio e tecnoplastica / Stahl und Kunststoff

Adjustable feet for furniture with interior adjustment M10  
 Piedino regolabile per mobile, base circolare, M10  
 Nivellierfuß für Möbel mit inneren Regulierung, M10



H	Cod.		
38	<b>20208</b>	<b>05</b>	20
46	<b>20209</b>	<b>05</b>	20
61	<b>20210</b>	<b>05</b>	20

Steel and plastic / Acciaio e tecnoplastica / Stahl und Kunststoff

Adjustable feet for furniture with hexagonal base M8  
 Regolabili per mobile M8, base esagonale e regolazione esterna  
 Nivellierfuß mit sechseckigem Fußteller, M8



H	Cod.		
38	<b>20206</b>	<b>05</b>	20

Steel and plastic / Acciaio e tecnoplastica / Stahl und Kunststoff

Adjustable feet for furniture, circular base M6  
 Piedino regolabile per mobile, base circolare, M6  
 Nivellierfuß für Möbel mit rundem Fußteller, M6



Ø	Cod.		
35	<b>20204</b>	<b>25</b>	20
43	<b>20205</b>	<b>25</b>	20

Steel and plastic / Acciaio e tecnoplastica / Stahl und Kunststoff

Adjustable feet for furniture with circular base, M10  
 Piedini regolabili con base circolare M10, D. 43 mm  
 Nivellierfuß für Möbel mit rundem Fußteller, M10



H	Cod.		
37	<b>20207</b>	<b>64</b>	10

Steel and plastic / Acciaio e tecnoplastica / Stahl und Kunststoff

Ledown2 Circular leveller D12x76  
 Regolabili Ledown2 circolari D12x76  
 Runder Nivellierer Ledown2, D. 12 mm, H. 76 mm



H	Cod.		
70	<b>20227</b>	<b>05</b>	10

Steel and plastic / Acciaio e tecnoplastica / Stahl und Kunststoff

**Max.**  
250 kg

Furniture leveller M10  
 Regolabili per mobile M10  
 Nivellierfuß für Möbel M10



H	Cod.		
46	<b>20306</b>	<b>05</b>	10

Steel and plastic / Acciaio e tecnoplastica / Stahl und Kunststoff

Nails sliders for furniture  
 Pattini di protezione con chiodo per mobile  
 Möbelgleiter mit Nagel



Cod.				
<b>20303</b>	<b>15</b>	<b>16</b>	<b>17</b>	100
<b>20304</b>	<b>15</b>	<b>16</b>	<b>17</b>	1.000

Steel and plastic / Acciaio e tecnoplastica / Stahl und Kunststoff

**Pistons and springs**  
**Pistoni e braccetti / Türdämpfer und Klappenhalter**

Spring for lift-up door Agile  
 Braccetto per ante a ribalta verso l'alto Agile  
 Klappenhalter für Hubtür Agile



Size	Cod.			
580 - 1.250	<b>12130</b>	15	23	1
960 - 2.040	<b>12131</b>	15	23	1
1.800 - 3.500	<b>12132</b>	15	23	1
3.200 - 9.000	<b>12135</b>	15	23	1

Steel and plastic / Acciaio e tecnoplastica / Stahl und Kunststoff



Batch of NSDX springs for lift-up doors  
 Kit Braccetti pensili per ante a ribalta verso l'alto NSDX  
 Klappenhalter-Set für Hubtüren NSDX



Size	Cod.			
20 - 70 kg x cm	<b>12756</b>	07		1

Steel and zamak / Acciaio e zama / Stahl und Zamak



Batch of NSDX springs for folding doors  
 Braccetti a ribalta NSDX  
 Klappenhalter-Set für Klapptüren NSDX



Size	Cod.			
20 - 70 kg x cm	<b>12757</b>	07		1

Steel and zamak / Acciaio e zama / Stahl und Zamak

Batch of NSDX springs for cabinet doors  
 Braccetto cassapanca NSDX  
 Klappenhalter-Set für Truhentüren NSDX



Size	Cod.			
20 - 70 kg x cm	<b>12758</b>	07		1

Steel and zamak / Acciaio e zama / Stahl und Zamak



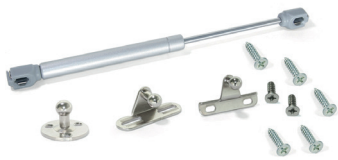
Springs for folding doors  
Braccetti per porte a battente  
Klappenhalter für Klapptüren

Cod.		
<b>10156</b>	<b>62</b>	<b>2</b>

Aluminium and steel  
Alluminio e acciaio  
Aluminium und Stahl



Gas struts for lift-up doors  
Pistone a gas per ante a ribalta verso l'alto con forza  
Türdämpfer mit Gasdruck für Hubtüren



Size	Cod.		
5 kg - 100 mm	<b>10059</b>	<b>25</b>	1
8 kg - 100 mm	<b>10057</b>	<b>25</b>	1
11 kg - 100 mm	<b>10058</b>	<b>25</b>	1
5 kg - 80 mm	<b>10109</b>	<b>25</b>	1
8 kg - 80 mm	<b>10056</b>	<b>25</b>	1
11 kg - 80 mm	<b>10080</b>	<b>25</b>	1
5 kg - 100 mm	<b>12744</b>	<b>25</b>	10
8 kg - 100 mm	<b>12742</b>	<b>25</b>	10
11 kg - 100 mm	<b>12743</b>	<b>25</b>	10
5 kg - 80 mm	<b>12749</b>	<b>25</b>	10
8 kg - 80 mm	<b>12741</b>	<b>25</b>	10
11 kg - 80 mm	<b>12745</b>	<b>25</b>	10

Steel and plastic / Acciaio e tecnoplastica /  
Stahl und Kunststoff

Gas struts for lift-up doors  
Pistone a gas per ante a ribalta verso l'alto con forza  
Türdämpfer mit Gasdruck für Hubtüren



Size	Cod.		
5 kg - 100 mm	<b>12760</b>	<b>25</b>	20
8 kg - 100 mm	<b>12761</b>	<b>25</b>	20
11 kg - 100 mm	<b>12762</b>	<b>25</b>	20
5 kg - 80 mm	<b>12763</b>	<b>25</b>	20
8 kg - 80 mm	<b>12764</b>	<b>25</b>	20
11 kg - 80 mm	<b>12765</b>	<b>25</b>	20

Steel and plastic / Acciaio e tecnoplastica /  
Stahl und Kunststoff

Gas struts for folding doors  
Pistone per ante a ribalta con forza  
Türdämpfer mit Gasdruck für Klapptüren



Size	Cod.		
12 kg - 100 mm	<b>10082</b>	<b>25</b>	1
6 kg - 80 mm	<b>10055</b>	<b>25</b>	1
12 kg - 80 mm	<b>10081</b>	<b>25</b>	1
12 kg - 100 mm	<b>12747</b>	<b>25</b>	10
6 kg - 80 mm	<b>12740</b>	<b>25</b>	10
12 kg - 80 mm	<b>12746</b>	<b>25</b>	10

Steel and plastic / Acciaio e tecnoplastica /  
Stahl und Kunststoff

Gas struts for folding doors  
Pistone per ante a ribalta con forza  
Türdämpfer mit Gasdruck für Klapptüren



Size	Cod.		
6 kg - 100 mm	<b>12766</b>	<b>25</b>	20
12 kg - 100 mm	<b>12767</b>	<b>25</b>	20
6 kg - 100 mm	<b>12768</b>	<b>25</b>	20
12 kg - 100 mm	<b>12769</b>	<b>25</b>	20

Steel and plastic / Acciaio e tecnoplastica /  
Stahl und Kunststoff

Lateral hitch for doors with gas struts  
Aggancio laterale per ante con pistoni  
Seitlicher Befestiger für Türen mit Türdämpfer



Pivot	Cod.		
Yes	<b>12770</b>	<b>07</b>	20
No	<b>12771</b>	<b>07</b>	20

Steel / Acciaio / Stahl

Hook for doors with gas strut  
Aggancio per ante a pistone  
Befestiger für Tür mit Türdämpfer



Type	Cod.		
For wood / aluminum	<b>12772</b>	<b>25</b>	20
For aluminum	<b>12773</b>	<b>25</b>	20

Steel / Acciaio / Stahl



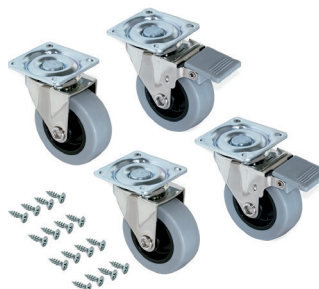
Slip transparent caster wheels with a mounting plate  
Ruote Slip con piastra per montaggio  
Rollen Slip mit Anschraubplatte



∅	Cod.		
50	<b>20360</b>	<b>20</b>	1
75	<b>20361</b>	<b>20</b>	1

Steel and plastic / Acciaio e tecnoplastica / Stahl und Kunststoff

Caster wheels Slip 2 with a mounting plate  
Ruote Slip 2 con piastra per montaggio  
Rollen Slip 2 mit Anschraubplatte



∅	Cod.		
50	<b>20362</b>	<b>21</b>	1
75	<b>20363</b>	<b>21</b>	1
100	<b>20030</b>	<b>21</b>	1
50 (M8 x 15)	<b>20371</b>	<b>21</b>	1

Steel and plastic / Acciaio e tecnoplastica / Stahl und Kunststoff



Caster wheels Slip with a mounting plate  
Ruote Slip con piastra per montaggio  
Rollen Slip mit Anschraubplatte



∅	Cod.		
50	<b>20369</b>	<b>64</b>	1
75	<b>20370</b>	<b>64</b>	1

Steel and plastic / Acciaio e tecnoplastica / Stahl und Kunststoff

Caster wheels Silent  
Ruote Silent  
Rollen Silent



∅	Cod.		
75	<b>20372</b>	<b>21</b>	1
75 (M10 x 20)	<b>20373</b>	<b>21</b>	1

Steel and plastic / Acciaio e tecnoplastica / Stahl und Kunststoff



Caster wheels Bowl with a mounting plate  
Ruote Bowl con piastra per montaggio  
Rollen Bowl mit Anschraubplatte



∅	Cod.		
50	<b>20364</b>	<b>21</b>	1
75	<b>20365</b>	<b>21</b>	1

Steel and plastic / Acciaio e tecnoplastica / Stahl und Kunststoff

Caster wheels for chest of drawers  
Ruote per cassetiera  
Rollen für Schublade



∅	Cod.		
50	<b>20366</b>	<b>17</b>	1
40	<b>20367</b>	<b>17</b>	1

Steel and plastic / Acciaio e tecnoplastica / Stahl und Kunststoff

Caster wheels Bowl with a mounting plate  
Ruote Bowl con piastra per montaggio  
Rollen Bowl mit Anschraubplatte



∅	Cod.		
30	<b>20368</b>	<b>17</b>	1

Steel and plastic / Acciaio e tecnoplastica / Stahl und Kunststoff

Caster wheels for chest of drawers  
Ruote per cassetiera  
Rollen für Schublade



∅	Cod.		
40	<b>20378</b>	<b>17</b>	1

Steel and plastic / Acciaio e tecnoplastica / Stahl und Kunststoff

Mak caster wheels D. 80 mm with a mounting plate  
 Rotelle Mak D. 80 mm con piastra di montaggio  
 Rollen Mak, D. 80 mm, mit Anschraubplatte



Ø	Cod.		
80	20379	21	1

Steel and plastic / Acciaio e tecnoplastica / Stahl und Kunststoff

Auxiliary caster wheels, D. 13 mm for rotating cover  
 Rotelle ausiliari per mobile, D. 13 mm per piano girevole  
 Hilfsrollen für Möbel D. 13 mm für Schwenkplatte



Ø	Cod.		
80	20399	05	20

Steel and plastic / Acciaio e tecnoplastica / Stahl und Kunststoff

## Shelf supports Reggipiani / Regalstützen

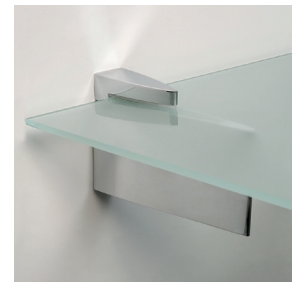
Zipp 2 Shelf support for Wood/Glass  
 Supporto Zipp 2 per mensola in legno o vetro  
 Bodenträger Zipp 2 für Holz- oder Glasregale



Cod.		
40096	25	2

Plastic and zamak / Tecnoplastica e zama / Kunststoff und Zamak

Zipp 3 Shelf support for Wood/Glass  
 Supporto Zipp 3 per mensola in legno o vetro  
 Bodenträger Zipp 3 für Holz- oder Glasregale



Cod.		
40097	25	2

Plastic and zamak / Tecnoplastica e zama / Kunststoff und Zamak

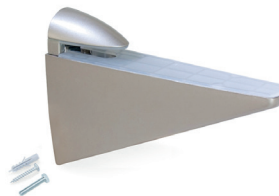
Aguila Shelf support for Wood/Glass  
 Supporto Aguila per mensola in legno o vetro  
 Bodenträger Aguila für Holz- oder Glasregale



Cod.		
40093	25	2

Plastic and zamak / Tecnoplastica e zama / Kunststoff und Zamak

Halcon Shelf support for Wood/Glass  
 Reggipiano per mensole in legno/vetro Halcón  
 Bodenträger Halcón für Holz- oder Glasregale



Cod.			
40092	24	25	2

Plastic and zamak / Tecnoplastica e zama / Kunststoff und Zamak

Venecia Shelf support for Wood/Glass  
 Supporto Venezia per mensola in legno o vetro  
 Bodenträger Venecia für Holz- oder Glasregale



Cod.		
40089	25	2

Plastic and zamak / Tecnoplastica e zama / Kunststoff und Zamak

Squad 2 Shelf support for Wood/Glass  
 Supporto Squad 2 per mensola in legno o vetro  
 Bodenträger Squad 2 für Holz- oder Glasregale



Cod.		
40091	25	2

Plastic and zamak / Tecnoplastica e zama / Kunststoff und Zamak

Mirlo Shelf support for Wood/Glass  
 Supporto Mirlo per mensola in legno o vetro  
 Bodenträger Mirlo für Holz- oder Glasregale



Cod.			
40095	25		2

Plastic and zamak /  
 Tecnoplastica e zama /  
 Kunststoff und Zamak

Azor shelf support for wood/glass  
 Reggipiano per mensole di legno/vetro Azor  
 Bodenträger Azor für Holz- oder Glasregale



Cod.			
40094	24	25	2

Plastic and zamak /  
 Tecnoplastica e zama /  
 Kunststoff und Zamak

Pelicano shelf support for Wood/Glass  
 Supporto Pelicano per mensola in legno o vetro  
 Bodenträger Pelicano für Holz- oder Glasregale



Cod.			
40090	25		2

Plastic and zamak /  
 Tecnoplastica e zama /  
 Kunststoff und Zamak

Hidden shelf support for wood  
 Supporto a scomparsa Phantom per mensola in legno  
 unsichtbarer Bodenträger Phantom für Holzregal



Cod.			
40099	25		2

Steel / Acciaio / Stahl

21AD Shelf support for Wood, D. 5 mm  
 Supporto per mensole in legno 21A D. 5 mm  
 Bodenträger für Holzregal 21A D. 5 mm



∅	Cod.			
5	40227	07		50

Zamak / Zama / Zamak

102 Straight shelf holder brackets for wood, D. 5 mm  
 Squadra reggimensola con perno scanalato 102 per legno D. 5 mm  
 Bodenträger mit kanneliertem Bolzen 102 D. 5 mm für Holz



∅	Cod.			
5	40229	07		50

Zamak / Zama / Zamak

074 Straight shelf holder brackets for wood D. 5 mm  
 Squadra reggimensola con perno liscio 074 per legno D. 5 mm  
 Bodenträger mit ebenem Bolzen 074 D. 5 mm für Holz



∅	Cod.			
5	40228	07		50

Zamak / Zama / Zamak

103 Shelf supports for wood with 2 bolt, D. 5 mm  
 Supporto a due perni per mensola in legno 103 D. 5 mm  
 Bodenträger mit 2 Bolzen für Holzregale 103 D. 5 mm



∅	Cod.			
5	40230	07		50

Zamak / Zama / Zamak

Shelf support for Wood, teaspoon  
 Reggipiano per mensole in legno, a cucchiaino  
 Bodenträger für Holzregale, Löffelform



∅	Cod.			
3	40231	07		50
5	40232	07		50

Zamak / Zama / Zamak

623 Tubular shelf support, D. 5 mm for Wood  
 Reggipiani tondo 623 D. 5 mm per legno  
 Bodenträger Röhrenform 623 D. 5 mm für Holz



∅	Cod.			
5	40233	07		50

Zamak / Zama / Zamak

097 Tubular shelf support, D. 3 mm for Wood  
 Reggipiani tondo 097 D. 3 mm per legno  
 Bodenträger Röhrenform 097 D. 3 mm für Holz



∅	Cod.			
3	40234	07		50

Zamak / Zama / Zamak

Shelf support for wood, with pivot  
 Reggipiano per mensola in legno, con perno  
 Bodenträger transparent für Holzregale, mit Zapfen



∅	Cod.			
3	40235	20		50
5	40236	20		50

Steel and plastic / Acciaio  
 e tecnoplastica / Stahl und  
 Kunststoff

Evo Shelf support for glass  
Reggipiano per piani in vetro Evo  
Bodenträger für Glasregale Evo



Ø	Cod.		
5	40244	07	50

Zamak / Zama / Zamak



138 Shelf support for glass, D. 5 mm  
Reggipiano per piani in vetro 138 D. 5 mm  
Bodenträger für Glasregale 138 D. 5 mm



Ø	Cod.		
5	40238	07	50

Plastic and zamak /  
Tecnoplastica e zama /  
Kunststoff und Zamak

557 Shelf support for glass  
Reggipiano per mensole in vetro  
Bodenträger für Glasregale



Ø	Cod.		
3	40239	20	50
5	40240	20	50

Steel and plastic / Acciaio  
e tecnoplastica / Stahl und  
Kunststoff

21B Shelf support for glass D. 5 mm  
Reggipiano per piani in vetro 21B D. 5 mm  
Bodenträger für Glasregale 21B D. 5 mm



Ø	Cod.		
5	40237	07	50

Plastic and zamak /  
Tecnoplastica e zama /  
Kunststoff und Zamak

561 Shelf support for glass, D. 5 mm  
Reggipiano per piani in vetro 561 D. 5 mm  
Bodenträger für Glasregale 561 D. 5 mm



Ø	Cod.		
5	40246	07	50

Plastic and zamak /  
Tecnoplastica e zama /  
Kunststoff und Zamak

San Remo Shelf support for glass, D. 5 mm  
Reggipiano per piani in vetro San Remo D. 5 mm  
Bodenträger für Glasregale San Remo D. 5 mm



Ø	Cod.		
5	40241	07	50

Plastic and zamak /  
Tecnoplastica e zama /  
Kunststoff und Zamak

Portofino Shelf support for glass, D. 5 mm  
Reggipiano per piani in vetro Portofino D. 5 mm  
Bodenträger für Glasregale Portofino D. 5 mm



Ø	Cod.		
5	40245	07	50

Plastic and zamak /  
Tecnoplastica e zama /  
Kunststoff und Zamak

540 Transparent shelf support for glass  
Supporto trasparente per mensole in vetro 540  
Bodenträger transparent für Glasregale 540



Ø	Cod.		
5	40247	20	50

Plastic / Tecnoplastica /  
Kunststoff

Shelf support for glass with rubber  
Reggipiano per mensole in vetro, con gomma  
Bodenträger für Glasregale, mit Gummi



Ø	Cod.		
3	40242	07	50
5	40243	07	50

Steel and plastic / Acciaio  
e tecnoplastica / Stahl und  
Kunststoff

Orlando furniture handle  
Maniglia per mobile Orlando  
Möbelgriff Orlando



L	Cod.		
128	<b>92904</b>	<b>51</b>	1
160	<b>93527</b>	<b>51</b>	1
192	<b>92903</b>	<b>51</b>	1
224	<b>93528</b>	<b>51</b>	1
256	<b>92902</b>	<b>51</b>	1
320	<b>92901</b>	<b>51</b>	1
384	<b>92900</b>	<b>51</b>	1
448	<b>92925</b>	<b>51</b>	1
128	<b>91635</b>	<b>51</b>	10
160	<b>91636</b>	<b>51</b>	10
192	<b>91637</b>	<b>51</b>	10
224	<b>91638</b>	<b>51</b>	10
256	<b>91639</b>	<b>51</b>	10
320	<b>91640</b>	<b>51</b>	10
384	<b>91641</b>	<b>51</b>	10
448	<b>91642</b>	<b>51</b>	10

Steel / Acciaio / Stahl



Seoul furniture handle  
Maniglia per mobile Seoul  
Möbelgriff Seoul



L	Cod.		
128	<b>93081</b>	<b>51</b>	1
192	<b>93082</b>	<b>51</b>	1
128	<b>91643</b>	<b>51</b>	20
192	<b>91644</b>	<b>51</b>	20

Steel / Acciaio / Stahl

Porto furniture handle  
Maniglia per mobile Porto  
Möbelgriff Porto



L	Cod.		
128	<b>92978</b>	<b>51</b>	1
160	<b>92979</b>	<b>51</b>	1
192	<b>92980</b>	<b>51</b>	1
224	<b>92981</b>	<b>51</b>	1
256	<b>92982</b>	<b>51</b>	1
128	<b>91645</b>	<b>51</b>	25
160	<b>91646</b>	<b>51</b>	25
192	<b>91647</b>	<b>51</b>	20
224	<b>91648</b>	<b>51</b>	20
256	<b>91649</b>	<b>51</b>	20

Steel / Acciaio / Stahl

Coimbra furniture handle  
Maniglia per mobile Coimbra  
Möbelgriff Coimbra



L	Cod.		
96	<b>92988</b>	<b>11</b>	<b>64</b> 1
128	<b>92989</b>	<b>11</b>	<b>64</b> 1
96	<b>91633</b>	<b>11</b>	<b>64</b> 20
128	<b>91634</b>	<b>11</b>	<b>64</b> 20

Steel / Acciaio / Stahl



Setubal furniture handle  
Maniglia per mobile Setubal  
Möbelgriff Setubal



L	Cod.			
32	<b>93002</b>	<b>51</b>		1
128	<b>93004</b>	<b>51</b>		1
32	<b>91660</b>	<b>51</b>		25
128	<b>91661</b>	<b>51</b>		25

Aluminium / Alluminio / Aluminium



Dublin furniture handle  
Maniglia per mobile Dublin  
Möbelgriff Dublin



L	Cod.			
64	<b>93031</b>	<b>62</b>		1
128	<b>93032</b>	<b>62</b>		1
160	<b>93033</b>	<b>62</b>		1
64	<b>91657</b>	<b>62</b>		25
128	<b>91658</b>	<b>62</b>		25
160	<b>91659</b>	<b>62</b>		25

Aluminium / Alluminio / Aluminium

Glasgow furniture handle  
Maniglia per mobile Glasgow  
Möbelgriff Glasgow



L	Cod.			
64	<b>93035</b>	<b>62</b>		1
64	<b>91629</b>	<b>62</b>		25

Aluminium / Alluminio / Aluminium

Tulip1 adhesive furniture handle  
Maniglia adesiva per mobile Tulip1  
Selbstklebender Möbelgriff Tulip1



L	Cod.			
64	<b>91621</b>	<b>62</b>		20
94	<b>91622</b>	<b>62</b>		20
126	<b>91623</b>	<b>62</b>		20
158	<b>91624</b>	<b>62</b>		20

Aluminium / Alluminio / Aluminium

Tulip2 adhesive furniture handle  
Maniglia adesiva per mobile Tulip2  
Selbstklebender Möbelgriff Tulip2



L	Cod.			
62	<b>91625</b>	<b>62</b>		20
94	<b>91626</b>	<b>62</b>		20
126	<b>91627</b>	<b>62</b>		20
158	<b>91628</b>	<b>62</b>		20

Aluminium / Alluminio / Aluminium

Bristol furniture handle  
Maniglia per mobile Bristol  
Möbelgriff Bristol

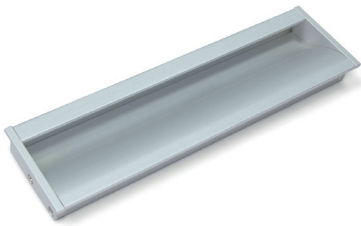


L	Cod.			
160	<b>92945</b>	<b>11</b>	<b>62</b>	1
256	<b>92946</b>	<b>11</b>	<b>62</b>	1
160	<b>91631</b>	<b>11</b>	<b>62</b>	20
256	<b>91632</b>	<b>11</b>	<b>62</b>	20

Aluminium / Alluminio / Aluminium



Bologna furniture handle  
Maniglia per mobile Bologna  
Möbelgriff Bologna



L	Cod.		
160	<b>92922</b>	<b>62</b>	1
160	<b>91630</b>	<b>62</b>	20

Aluminium / Alluminio / Aluminium

Verona Furniture knob  
Pomolo Verona per mobile  
Möbelknopf Verona



H	Cod.		
25	<b>91671</b>	<b>62</b>	25

Aluminium / Alluminio / Aluminium

Como furniture handle  
Maniglia per mobile Como  
Möbelgriff Como



L	Cod.		
96	<b>91604</b>	<b>25</b>	25

ABS - PVC

Bari furniture handle  
Maniglia per mobile Bari  
Möbelgriff Bari



L	Cod.		
64	<b>91605</b>	<b>25</b>	25
96	<b>91606</b>	<b>25</b>	25
128	<b>91607</b>	<b>25</b>	25
160	<b>91608</b>	<b>25</b>	25

ABS - PVC

Kyoto furniture handle  
Maniglia per mobile Kyoto  
Möbelgriff Kyoto



L	Cod.		
96	<b>93031</b>	<b>51 52</b>	1
128	<b>93032</b>	<b>51 52</b>	1
160	<b>93033</b>	<b>51 52</b>	1
96	<b>93557</b>	<b>51 52</b>	20
128	<b>93558</b>	<b>51 52</b>	20
160	<b>93559</b>	<b>51 52</b>	20

Zamak / Zama / Zamak

Kobe furniture handle  
Maniglia per mobile Kobe  
Möbelgriff Kobe



L	Cod.		
96	<b>93560</b>	<b>51 52</b>	1
128	<b>93561</b>	<b>51 52</b>	1
160	<b>93562</b>	<b>51 52</b>	1
96	<b>91694</b>	<b>51 52</b>	20
128	<b>91695</b>	<b>51 52</b>	20
160	<b>91696</b>	<b>51 52</b>	20

Zamak / Zama / Zamak



Fuji furniture handle  
Maniglia per mobile Fuji  
Möbelgriff Fuji



L	Cod.			
96	93539	25	51	1
128	93540	25	51	1
160	93549	25	51	1
96	91610	25	51	25
128	91611	25	51	25
160	91662	25	51	25

Zamak / Zama / Zamak

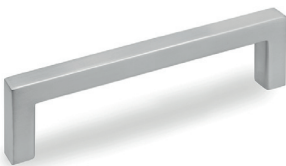
Montreal furniture handle  
Maniglia per mobile Montreal  
Möbelgriff Montreal



L	Cod.				
128	92917	11	25	51	1
160	92918	11	25	51	1
128	91653	11	25	51	20
160	91654	11	25	51	20

Zamak / Zama / Zamak

Habana furniture handle  
Maniglia per mobile Habana  
Möbelgriff Habana



L	Cod.			
128	92986	51		1
160	92987	51		1
128	91612	51		25
160	91613	51		25

Zamak / Zama / Zamak



Shanghai furniture handle  
Maniglia per mobile Shanghai  
Möbelgriff Shanghai



L	Cod.			
128	93158	51	64	1
128	91651	51	64	25

Zamak / Zama / Zamak

Tenerife furniture handle  
Maniglia per mobile Tenerife  
Möbelgriff Tenrife



L	Cod.				
128	93152	11	25	51	1
128	91618	11	25	51	25

Zamak / Zama / Zamak

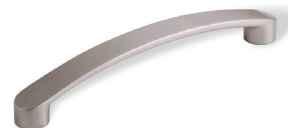
Bombay furniture handle  
Maniglia per mobile Bombay  
Möbelgriff Bombay



L	Cod.			
128	92921	25	51	1
128	91609	25	51	20

Zamak / Zama / Zamak

Minneapolis furniture handle  
Maniglia per mobile Minneapolis  
Möbelgriff Minneapolis



L	Cod.			
160	93155	51		1
160	91656	51		25

Zamak / Zama / Zamak

Papua furniture handle  
Maniglia per mobile Papua  
Möbelgriff Papua



L	Cod.			
76	93491	08	68	1
76	91603	08	68	20

Zamak / Zama / Zamak

Nairobi furniture handle  
Maniglia per mobile Nairobi  
Möbelgriff Nairobi



L	Cod.			
96	93493	08		1
96	91602	08		20

Zamak / Zama / Zamak



Nagoya furniture handle  
Maniglia Nicaragua per mobile  
Möbelgriff Nagoya



Cod.				
93556	51	52	1	
91664	51	52	10	

Zamak / Zama / Zamak

Lima furniture knob  
Pomolo Lima per mobile  
Möbelknopf Lima



Cod.				
93552	51		1	
91663	51		25	

Zamak / Zama / Zamak

Tucson furniture knob  
Pomolo per mobile Tucson  
Möbelknopf Tucson



Cod.				
92920	11	51	64	1
91650	11	51	64	25

Zamak / Zama / Zamak

Milano furniture knob  
Pomolo per mobile Milano  
Möbelknopf Milano



Cod.				
91655	51		25	

Zamak / Zama / Zamak

Santiago furniture knob  
Pomolo per mobile Santiago  
Möbelknopf Santiago



Cod.				
92995	51		1	
91652	51		25	

Zamak / Zama / Zamak

Reno furniture knob  
Pomolo per mobile Reno  
Möbelknopf Reno



Cod.				
91617	64		25	

Zamak / Zama / Zamak

Oregon furniture knob  
Pomolo per mobile Oregon  
Möbelknopf Oregon



Cod.				
92985	13	51	1	
91615	13	51	25	

Zamak / Zama / Zamak

Panama furniture knob  
Pomolo per mobile Panama  
Möbelknopf Panamá



Cod.				
92919	11	51	1	
91616	11	51	20	

Zamak / Zama / Zamak

Nime furniture knob  
Pomolo per mobile Nimes  
Möbelknopf Nimes



Cod.				
92977	51		1	
91614	51		25	

Zamak / Zama / Zamak

Vienna furniture knob  
Pomolo per mobile Vienna  
Möbelknopf Vienna



Ø	Cod.			
20	92983	-	51	1
25	92984	-	51	1
20	91619	13	51	25
25	91620	-	51	25

Zamak / Zama / Zamak

Mali Furniture knob  
Pomolo per mobile Mali  
Möbelknopf Mali



Cod.				
93470	08	14	1	
91600	08	14	25	

Zamak / Zama / Zamak

Marrakech furniture handle  
Maniglia per mobile Marrakech  
Möbelgriff Marrakech



Cod.				
93489	08	14	1	
91601	08	14	20	

Zamak / Zama / Zamak

## Screws, nuts and brackets

### Perno, bussola y squadra / Schrauben, Muttern und Winkel

XZ self-tapping screw with Pozidrive flathead  
Vite autofilettante XZ con testa piana Pozidrive  
Verbindungsschraube XZ mit Flachkopf Pozidrive



Ø	L	Cod.		
3,5	16	<b>40278</b>	<b>05</b>	1.000
3,5	20	<b>40279</b>	<b>05</b>	1.000
3,5	30	<b>40280</b>	<b>05</b>	500
4	16	<b>40281</b>	<b>05</b>	500
4	20	<b>40282</b>	<b>05</b>	500
4	30	<b>40283</b>	<b>05</b>	500

Steel / Acciaio / Stahl

Pozidrive flathead euro screw  
Vite Euro con testa piana Pozidrive  
Euroschraube mit Flachkopf Pozidrive



Ø	L	Cod.		
6,2	11	<b>40274</b>	<b>05 07</b>	500
6,2	13	<b>40275</b>	<b>05 07</b>	500

Steel / Acciaio / Stahl

Extra flat head screw and M4 bolt  
Vite maschio e femmina M4 con testa extrapiana  
Gewindeschrauben mit extraflachem Kopf und Hülsenmuttern M4



Ø	L	Cod.		
10	14	<b>40248</b>	<b>07</b>	50
10	20	<b>40249</b>	<b>07</b>	50
10	25	<b>40250</b>	<b>07</b>	50
10	30	<b>40251</b>	<b>07</b>	50
10	35	<b>40252</b>	<b>07</b>	50
10	40	<b>40253</b>	<b>07</b>	50

Steel / Acciaio / Stahl

Self-tapping screw with Allen flathead screw  
Vite autofilettante con testa piana Allen  
Verbindungsschraube mit Flachkopf Allen



Ø	L	Cod.		
7	50	<b>40276</b>	<b>05</b>	500
5	50	<b>40277</b>	<b>05</b>	500

Steel / Acciaio / Stahl

Barbed bolt  
Bussola ragno  
Einschlagmutter



M	Cod.		
6	<b>40254</b>	<b>05</b>	20
8	<b>40255</b>	<b>05</b>	20
10	<b>40256</b>	<b>05</b>	20
6	<b>40188</b>	<b>05</b>	50
8	<b>40189</b>	<b>05</b>	50
10	<b>40190</b>	<b>05</b>	50

Steel / Acciaio / Stahl

Nut for countersunk holes  
Bussola per fori svasati  
Mutter für Senkbohrungen



M	Cod.		
6	<b>40286</b>	<b>01 05</b>	100
8	<b>40287</b>	<b>01 05</b>	100

Zamak / Zama / Zamak

M4 Brass expandable nuts  
Bussola ad espansione M4 in ottone  
Ausdehnbare Mutter M4 aus Messing



M	Cod.		
4	<b>40284</b>	<b>02</b>	100

Latón / Lation / Latão

M6 Brass expandable nuts with a sphere in their interior  
Bussola ad espansione M6 in ottone con sfera interna  
Ausdehnbare Mutter M6 aus Messing mit innerer Kugel



M	Cod.		
6	<b>40285</b>	<b>02</b>	100

Latón / Lation / Latão

Bolt for screwing  
Bussola per avvitare  
Schraubenmutter



M	Cod.		
8	<b>40180</b>	<b>05</b>	50
10	<b>40181</b>	<b>05</b>	50

Steel / Acciaio / Stahl

Flange bolt  
Bussola con testa  
Hutmutter



M	Cod.		
6	<b>40182</b>	<b>05</b>	50
8	<b>40183</b>	<b>05</b>	50
10	<b>40184</b>	<b>05</b>	50

Steel / Acciaio / Stahl

01 Natural zamak / Zama grezza / Natürliches Zamak  
02 Natural Brass / Ottone naturale / Messing  
05 Zinc plated / Zincato / Verzinkt  
07 Nickel plated / Nichelato / Vernickelt  
15 White plastic / Plastica bianca / Weisser Kunststoff

16 Brown / Marrone / Braun  
17 Black plastic / Plastica nera / Schwarzer Kunststoff  
19 Oak effect / Finitura rovere / Effekt Eiche  
20 Transparent / Trasparente / Transparent  
21 Grey plastic / Plastica grigia / Grauer Kunststoff

26 Cherry effect / Finitura ciliegio / Effekt Kirsche  
27 Grey textile effect / Effetto tessuto grigio / Grauer Textil-Effekt  
28 Beige textile effect / Effetto tessuto beige / Beiger Textil-Effekt  
30 Beech effect / Effetto faggio / Buche gebeizt  
78 Beech wood / Legno faggio / Buchenholz  
83 Wenge effect / Effetto wengé / Wenge gebeizt

Wooden dowels  
Spine in legno  
Holzdübel



Ø	L	Cod.		
6	30	40220	78	100
8	30	40221	78	100
8	35	40222	78	100
8	40	40223	78	100
10	40	40224	78	100
6	30	40293	78	1.000
8	30	40294	78	1.000
8	35	40295	78	1.000
8	40	40296	78	1.000
10	40	40297	78	1.000

Wood / Legno / Holz

Adhesive bumpers  
Paracolpi adesivo  
Schutzpuffer, selbstklebend



Ø	L	Cod.		
10	3	40260	20	500
7	1,5	40261	20	500
10	1,5	40262	20	500

Plastic / Tecnoplastica / Kunststoff

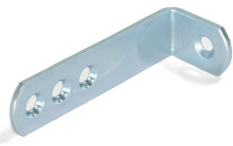
Adhesive screw covers  
Tappi Copriforo adesivo  
Abdeckkappe für Schrauben, selbstklebend



Ø	Cod.												
13	40263	15	16	17	19	21	23	26	27	28	30	83	1.000
13	40264	15	16	17	19	21	23	26	27	28	30	83	200
20	40265	15	16	17	19	21	23	26	27	28	30	83	900
20	40266	15	16	17	19	21	23	26	27	28	30	83	150

Plastic / Tecnoplastica / Kunststoff

Furniture brackets 70 x 22,5 mm  
Squadra di unione per mobile 70 x 22,5 mm  
Montagewinkel für Möbel, 70 x 22.5 mm



Size	Cod.		
70 x 22,5	40213	05	50

Steel / Acciaio / Stahl

Furniture brackets, 34 x 23,5 mm  
Squadra di unione per mobile, 34 x 23,5 mm  
Montagewinkel für Möbel, 34 x 23.5 mm



Size	Cod.		
34 x 23,5	40211	05	50

Steel / Acciaio / Stahl

Furniture brackets 42 x 42 mm  
Squadra di unione per mobile 42 x 42 mm  
Montagewinkel für Möbel, 42 x 42 mm



Size	Cod.		
42 x 42	40215	05	50

Steel / Acciaio / Stahl

Furniture brackets, 20 x 20,7 mm  
Squadra di unione per mobile 20,5 x 20,7 mm  
Montagewinkel für Möbel, 20.5 x 20.7 mm



Size	Cod.		
34 x 23,5	40209	07	50

Zamac / Zama / Zamak

Jointing Plates for furniture  
Piastra di unione 4 fori per mobile  
Verbindungsplatte für Möbelerückwand



Cod.		
40217	05	50

Steel / Acciaio / Stahl

Pre-mounted triangular fixing for wardrobe backs  
Fermaschiena triangolare pre-montato per armadi, Acciaio e Plastica, 50 u.  
Rückwandverbinder dreieckig, vormontiert



Cod.		
40216	17	50

Acero y plástico /  
Acier et plastique /  
Aço e plástico

Circular clamp for rear wardrobe  
Fermaschiena circolare per armadio  
Verbindungsklammer rund für Möbelerückwand



Cod.		
40218	05	50

Steel / Acciaio / Stahl

Rectangular clamp for rear wardrobe  
Fermaschiena rettangolare per armadio  
Verbindungsklammer rechteckig für Möbelerückwand



Cod.		
40219	05	50

Steel / Acciaio / Stahl

## Simbology / Simbologia / Symbolik

Cod. Code + Finishing Codice + Finitura Code + Ausführung	With CE certificate Con certificato CE Mit CE-Zertifizierung	Can be connected to various led lights Possibilità di connettere varie lampade Lichtquellen	Comes with remote control Dispone di telecomando Verfügt über Fernsteuerung
Soft closing Chiusura Soft Sanft schließend	Degree of protection Grado di protezione Schutzgrad	Manual cut Taglio manuale Manueller Schnitt	Timer Temporizzatore Zeitschalter
Thickness Spessore Dicke	Energy efficiency class Classe d'efficacità energetica Energieeffizienzklasse	Minimum distance of illuminated objects Distanza minima degli oggetti illuminati Mindestabstand beleuchteter Objekte	Dimmer Dimmer Dimmer
Espesor Epaisseur Espessura	AMP connection Connessione AMP AMP-Verbindung	Built-in lights Lampada ad incasso Einbauleuchte	Detection angle of sensor Angolo d'azione del sensore Erkennungswinkel des Sensors
Full overlay hinge Collo dritto Aufliegendes Topfscharnier	Longitude of cable Lunghezza cavo Kabellänge	Surface lights Lampada a superficie Anbauleuchte	Detection range of sensor Raggio d'azione del sensore Erkennungsbereich des Sensors
Overlay hinge Collo Mittelwinkel Topfscharnier	Includes the elements for the assembly Include gli elementi per il montaggio Enthält Montagezubehör	Diameter of holes Diametro di lavorazione Bohrlochdurchmesser	Maximum length 5 m. Lunghezza massima 5 m. Maximale Länge 5 m.
Insert hinge Collo alto Innenliegendes Topfscharnier	Beam angle Fascio di luce Lichtstrahl	LED light Lampada LED LED-Leuchte	

	3.000 - 3.900 K Luce calda Warm light Warmes Licht
	4.000 - 5.000 K Luce naturale Natural light Natürliches Licht
	5.100 - 7.000 K Luce fredda Cold light Kaltes Licht

	Use constant voltage converter Utilizzare convertitore a tensione costante Mit Konstant-Spannungswandler verwenden
	Without need to use LED-driver Senza necessità di utilizzare LED driver Kein LED-Konverter erforderlich

	Runs off batteries Funziona con pile Batteriebetrieben
	Comes with sensor Dispone di sensore Verfügt über Sensor

## Finishing / Finitura / Farbe

Natural zamak Zama grezza Natürliches Zamak	Black painted Verniciato nero Schwarz lackiert	Matt nickel Nichel opaco Mattes Nickel	Natural aluminium Alluminio naturale Natürliches Aluminium
Natural Brass Ottone naturale Messing	White plastic Plastica bianca Weisser Kunststoff	Metal-grey Grigio metallizzato Metallgrau lackiert	Matt anodized Anodizzato opaco Matt eloxiert
Zinc plated Zincato Verzinkt	Brown Marrone Braun	Cherry effect Finitura ciliegio Effekt Kirsche	Matt chrome plated Cromo opaco Matt verchromt
Nickel plated Nichelato Vernickelt	Black plastic Plastica nera Schwarzer Kunststoff	Grey textile effect Effetto tessuto grigio Grauer Textil-Effekt	Inox Inox Inox
Bronzed Bronzato Bronze	Oak effect Finitura rovere Effekt Eiche	Beige textile effect Effetto tessuto beige Beiger Textil-Effekt	Old silver Argento antico Altsilber
Brassed Ottonato Messing	Transparent Trasparente Transparent	Beech effect Effetto faggio Buche gebeizt	Anodizzato inox Inox eloxiert Rostfrei eloxiert
Chrome plated Cromo Verchromt	Grey plastic Plastica grigia Grauer Kunststoff	Anthracite grey Grigio antracite Anthrazitgrau	Beech wood Legno faggio Buchenholz
White painted Verniciato bianco Weiss lackiert	Oak effect Finitura rovere Effekt Eiche	Satin finished anodized Nichel satinato Transparentes Nickel	Wenge effect Effetto wenge Wenge gebeizt
Moka painted Verniciato moka Mokka lackiert	Anthracite grey Grigio antracite Anthrazitgrau	Titanium Titanium Titanium	

A large rectangular area with a light gray background, containing 25 horizontal lines for writing notes.

[emucaonline.com/en](http://emucaonline.com/en)  
[emucaonline.com/it](http://emucaonline.com/it)  
[emucaonline.com/de](http://emucaonline.com/de)



CERTIQALITY  
È MEMBRO DELLA  
FEDERAZIONE CISO



06/2019