

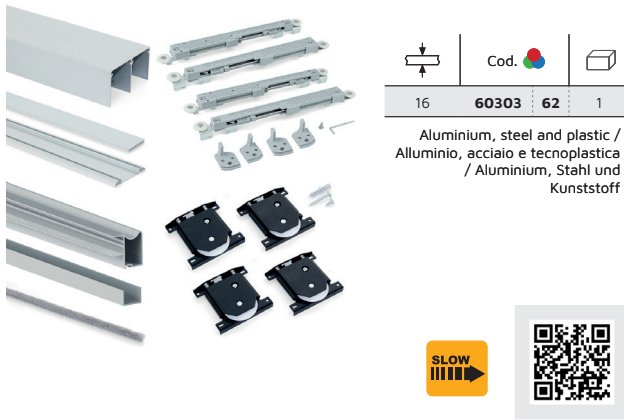
Wardrobe Armadio / Schrank



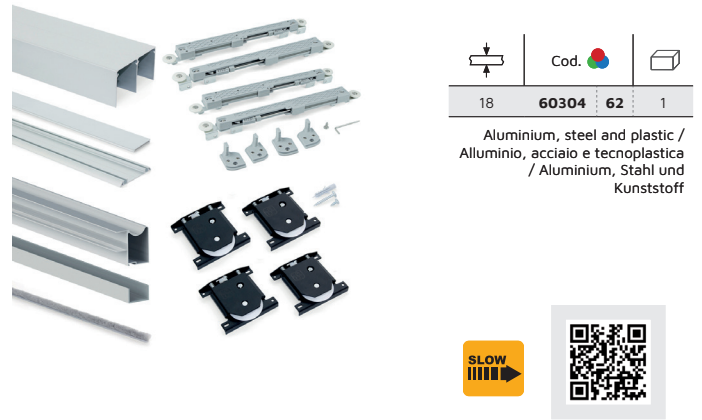
Fittings kits for wardrobes

Kit di garnizioni per armadio / Kits für Schrankbeschläge

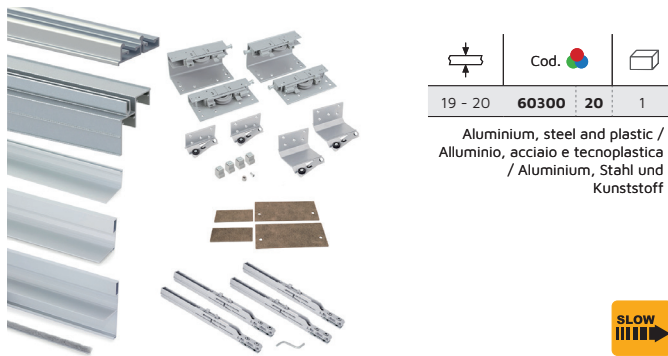
Sliding system for wardrobe 2 bottom sliding doors Placard with Wave16 profiles and soft closing
 Sistema scorrevole per armadio 2 ante a scorrimento inferiore Placard con profili Wave16 e chiusura soft
 Schiebetürensysteem für Schrank mit 2 Türen Laufrollen untere Schiene Placard mit Profilen Wave16 und sanftem Schließen



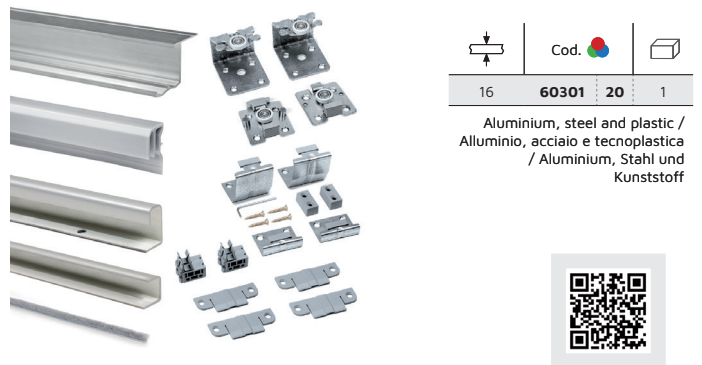
Sliding system for wardrobe 2 bottom sliding doors Placard with Wave18 profiles and soft closing
 Sistema scorrevole per armadio 2 ante a scorrimento inferiore Placard con profili Wave18 e chiusura soft
 Schiebetürensysteem für Schrank mit zwei Türen Laufrollen untere Schiene Placard mit Profilen Wave16 und sanftem Schließen



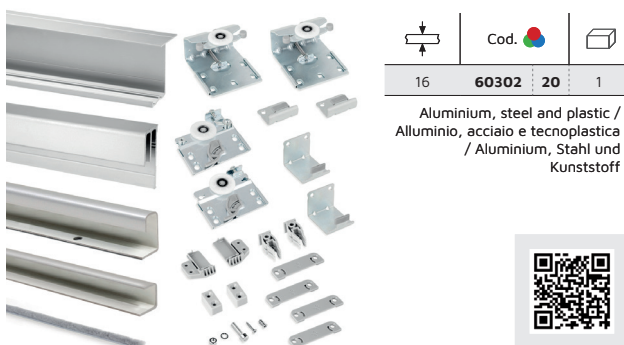
Sliding system for wardrobe 2 sliding hang doors Space+ with Free rapid profiles and soft closing
 Sistema scorrevole per armadio 2 ante sospese Space+ con profili Free rapid e chiusura soft
 Schiebetürensysteem für Schrank mit 2 aufgehängten Schiebetüren Space+ mit Profilen Free rapid und sanftem Schließen



Sliding system for wardrobe 2 sliding hang doors Supereco with Styl profiles
 Sistema scorrevole per armadio 2 ante sospese Supereco con profili Styl
 Schiebetürensysteem für Schrank mit 2 aufgehängten Schiebetüren Supereco mit Profilen Styl



Sliding system for wardrobe 2 sliding hang doors Neco with Styl profiles
 Sistema scorrevole per armadio 2 ante sospese Neco con profili Styl
 Schiebetürensysteem für Schrank mit 2 aufgehängten Schiebetüren Neco mit Profilen Styl



Interior organisation of wardrobes and dressing rooms

Organizzatori interni per armadi e cabine armadio / Innenorganisation von Schränken und Kleiderschränken

Wardrobe bars and hangers / Barre d'armadio e appendiabiti / Schrank- und Kleiderstangen

Sling Lift pull down wardrobe rail
Appendiabiti saliscendi per armadio Sling
Kleiderlift Sling



A	Cod.	11	15	52	
450-600	70300	11	15	52	1
600-830	70301	11	15	52	1
830-1.150	70302	11	15	52	1

Steel and plastic / Acciaio e tecnoplastica /
Stahl und Kunststoff



Side supplement for Sling Lift pull down wardrobe rail
Spessore laterale per appendiabiti saliscendi Sling
Seitlicher Abstandhalter für Kleiderlift Sling



Cod.	15	25	38	1
70303	15	25	38	1

Plastic / Tecnoplastica / Kunststoff



Hang Lift pull down wardrobe rail
Appendiabiti saliscendi per armadio Hang
Kleiderlift Hang



A	Cod.	11	13	1
450-600	92837	11	13	1
600-830	92838	11	13	1
830-1.150	92839	11	13	1

Steel and plastic / Acciaio e tecnoplastica / Stahl
und Kunststoff



Side supplement for Hang Lift pull down wardrobe rail
Spessore laterale per appendiabiti saliscendi Hang
Seitlicher Abstandhalter für Kleiderlift Hang



Cod.	25	13	1
92803	25	13	1

Plastic / Tecnoplastica /
Kunststoff

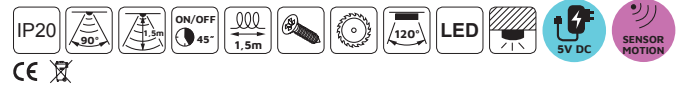


Castor Hanging wardrobe bar with LED light, removable battery and motion sensor
 Barra appendiabiti per armadi Castor con luce LED, batteria rimovibile e sensore di movimento
 Schrankstange Castor mit LED-Licht, herausnehmbarer Batterie und Bewegungssensor



A	Lumen	WATT	Colour	LEDs	Cod.		
558	30 lm	0,6 W	4.000 K	30	50740	13	62
708	35 lm	0,7 W	4.000 K	45	50741	13	62
858	45 lm	0,9 W	4.000 K	60	50742	13	62
1.008	50 lm	1 W	4.000 K	75	50743	13	62
1.158	55 lm	1,2 W	4.000 K	90	50744	13	62

Aluminium and plastic / Alluminio etecnoplastica / Aluminium und Kunststoff



Polux Hanging wardrobe bar with LED light with motion sensor
 Barra appendiabiti per armadi Polux con luce LED con sensore di movimento
 Schrankstange Polux mit LED-Licht mit Bewegungssensor



A	Lumen	WATT	Colour	LEDs	Cod.		
558	125 lm	2,6 W	4.000 K	32	50745	62	1
708	160 lm	3,3 W	4.000 K	41	50746	62	1
858	190 lm	4 W	4.000 K	50	50747	62	1
1.008	230 lm	4,8 W	4.000 K	59	50748	62	1
1.158	260 lm	5,5 W	4.000 K	68	50749	62	1

Aluminium and plastic / Alluminio etecnoplastica / Aluminium und Kunststoff



Moka extractable hanger for wardrobe
 Appendiabiti estraibile per armadio Moka
 Ausziehbare Kleiderstange für Schränke Moka



Cod.		
69387	13	1

Aluminium and plastic / Alluminio etecnoplastica / Aluminium und Kunststoff



Keeper extractable hanger for wardrobe
 Appendiabiti estraibile per armadio Keeper
 Ausziehbare Kleiderstange Keeper für Schränke



Cod.		
69163	62	1

Aluminium / Alluminio / Aluminium

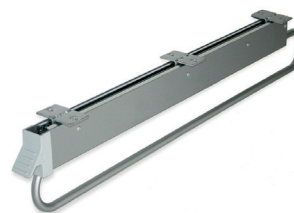
Self extractable hanger wardrobes
 Appendiabiti estraibile per armadi Self
 Ausziehbare Kleiderstange Self



L	Cod.		
300	62109	25	1
350	62108	25	1
400	62107	25	1
450	62106	25	1

Steel and plastic / Acciaio e tecnoplastica / Stahl und Kunststoff

Self extractable hanger for very deep wardrobes
 Appendiabiti estraibile per armadi a grande profondità Self
 Ausziehbare Kleiderstange für tiefe Schränke Self



L	Cod.		
800	70057	62	1

Steel and plastic / Acciaio e tecnoplastica / Stahl und Kunststoff

Wardrobe hanging rail, round, D. 28 mm
 Kit tubo rotondo per armadio, D. 28 mm
 Set mit runder Schrankstange D. 28 mm



L	Cod.			
950	70621	13	62	1
1.400	70622	13	62	1

Aluminium and zamak / Alluminio e zama / Aluminium und zamak



Silk Oval wardrobe hanging rail with rubber
 Kit tubo ovale per armadio con gomma Silk
 Set mit ovaler Schrankstange mit Gummi Silk



L	Cod.			
950	70611	62		1
1.400	70612	62		1

Aluminium and plastic / Alluminio etecnoplastica / Aluminium und Kunststoff

Oval wardrobe hanging rail kit, 30x15 mm, Aluminium
 Kit tubo ovale per armadio 30x15 mm Alluminio
 Set mit ovaler Schrankstange 30 x 15 mm aus Aluminium



L	Cod.			
950	70614	62		1
1.400	70615	62		1

Aluminium and zamak / Alluminio e zama / Aluminium und zamak

OvalWardrobe hanging rail kit, 30x15 mm, Steel
 Kit tubo ovale per armadio 30x15 mm Acciaio
 Set mit ovaler Schrankstange 30 x 15 mm aus Stahl



L	Cod.			
950	70616	11		1
1.400	70617	11		1

Steel and zamak / Acciaio e zama / Stahl und Zamak



Mini wardrobe rail end support
Reggitubo per appendiabiti da armadio mini
Schrankrohlager mini



Cod.				
70608	07	25		10
70624	07	25		50

Zamak / Zama / Zamak

Centre support for hanging rail
Supporto centrale per bastone appendiabiti
Schrankrohr-Mittelstütze



Cod.				
70610	07	25		10
70625	07	25		25

Zamak / Zama / Zamak

Wardrobe rail end support, Zamak
Supporto per appendiabiti da armadio in zama
Schrankrohlager aus Zamak



Cod.				
70651	07			10
70652	07			50

Zamak / Zamak / Zamak

Wardrobe rail end support
Supporto per appendiabiti da armadio
Schrankrohlager



Cod.				
70632	07			50

Steel / Acciaio / Stahl

Wardrobe rail end support to top mount
Supporto per appendiabiti da armadio con montaggio superiore
Schrankrohlager zur Montage oben



Cod.				
70626	07	25		10
70627	07	25		50

Zamak / Zama / Zamak



Silk wardrobe rail end support
Supporto per appendiabiti da armadio Silk
Schrankrohlager Silk

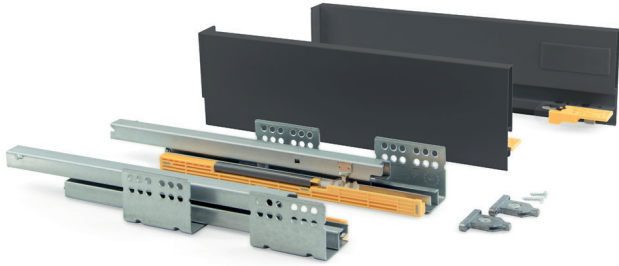


Cod.				
70609	25			5
70659	25			25

Plastic / Tecnoplastica / Kunststoff



Kitchen and bathroom Concept drawer kit
Cassetto per mobile e bagno Concept
Schubladen-Kit für Küche und Bad Concept



	Depth	Cod.			
	300	31001	12	35	1
	350	31002	12	35	1
	400	31003	12	35	1
	450	31004	12	35	1
	500	31005	12	35	1
	300	31007	12	35	1
	350	31008	12	35	1
	400	31009	12	35	1
	450	31010	12	35	1
	500	31011	12	35	1
	350	31014	12	35	1
	400	31015	12	35	1
	450	31016	12	35	1
	500	31017	12	35	1

Steel / Acciaio / Stahl

Set of gallery rails for Concept kitchen and bathroom drawers
Set di astine per cassetto da cucina e bagno Concept
Satz Relinge für Schubladen für Küche und Bad Concept



Depth	Cod.			
300	31101	12	35	1
350	31102	12	35	1
400	31103	12	35	1
450	31104	12	35	1
500	31105	12	35	1

Steel / Acciaio / Stahl

Lokbox joint for fastening the drawer bottom to the front
Meccanismo Lokbox per fissare il fondo del cassetto al fronte
Verbindung Lokbox zur Fixierung des Schubladenbodens an der Front



Cod.			
30492	21	20	

Plastic / Tecnoplastica / Kunststoff



Kitchen and bathroom Vantage-Q drawer kit
 Cassetto per mobile e bagno Vantage-Q
 Schubladen-Kit für Küche und Bad Vantage-Q



	Depth	Cod.			
	350	30153	12	25	1
	400	30154	-	25	1
	450	30155	12	25	1
	500	30156	12	25	1

Steel / Acciaio / Stahl

	Depth	Cod.			
	350	30184	12	25	1
	400	30623	-	25	1
	450	30185	12	25	1
	500	30186	12	25	1

Steel / Acciaio / Stahl

	Depth	Cod.			
	350	30187	12	25	1
	400	30624	-	25	1
	450	30188	12	25	1
	500	30189	12	25	1

Steel / Acciaio / Stahl

Mounting templates for Vantage-Q
 Sagoma di montaggio per astina cassetto Vantage Q
 Montageplakette für Relinge der Schublade Vantage-Q



Cod.		
41919	21	1

Plastic / Tecnoplastica / Kunststoff



Cod.		
41918	21	1

Plastic / Tecnoplastica / Kunststoff



Kitchen and bathroom Ultrabox drawer kit
Cassetto per mobile e bagno Ultrabox
Schubladen-Kit für Küche und Bad Ultrabox



Depth	Cod.	25	1	Depth	Cod.	25	1	Depth	Cod.	25	1
270	43873	25	1	270	43937	25	1	270	43939	25	1
350	43874	25	1	350	43938	25	1	350	43940	25	1
400	43875	25	1	400	43878	25	1	400	43881	25	1
450	43876	25	1	450	43879	25	1	450	43882	25	1
500	43877	25	1	500	43880	25	1	500	43883	25	1
270	30410	25	10	270	30413	25	10	270	30416	25	10
350	30027	25	10	350	30030	25	10	350	30033	25	10
400	30411	25	10	400	30414	25	10	400	30417	25	10
450	30028	25	10	450	30031	25	10	450	30034	25	10
500	30029	25	10	500	30032	25	10	500	30035	25	10



Steel / Acciaio / Stahl

Steel / Acciaio / Stahl

Steel / Acciaio / Stahl

Soft closing system for Ultrabox drawer L 250-300 mm
Meccanismo di chiusura soft per cassetto Ultrabox L 350 - 500 mm
Dämpfungssystem für Schublade Ultrabox L. 350-500 mm



L	Cod.	21	2
350 - 500	30428	21	2

Plastic / Tecnoplastica / Kunststoff

Set of gallery rails for Ultrabox kitchen and bathroom drawers
Set di astine per cassetto da cucina e bagno Ultrabox
Satz Relinge für Schublade für Küche und Bad Ultrabox



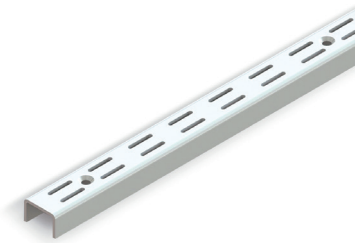
Depth	Cod.	25	1
350	43942	25	1
400	43936	25	1
450	43935	25	1
500	43934	25	1
350	30036	25	10
400	30418	25	10
450	30037	25	10
500	30040	25	10

Steel / Acciaio / Stahl



Shelf components for dressing rooms / Composizioni di pensili per cabine armadio / Regalkomponenten für Kleiderschränke

Jagmet wardrobe profiles with double slot 951 mm
 Profili armadio Jagmet a cremagliera doppia 951 mm
 Schrankprofile Jagmet mit doppelter Rille 951 mm



L	Cod.		
951	79079	12	10

Steel / Acciaio / Stahl

Jagmet wardrobe profiles with single slot 1.000 mm
 Profili armadio Jagmet a cremagliera semplice 1000 mm
 Schrankprofile Jagmet mit einfacher Rille 1.000 mm



L	Cod.		
1.000	79078	12	10

Steel / Acciaio / Stahl

Jagmet shelf support for profiles with 32 mm gap
 Supporto ripiano per armadio Jagmet profilo passo 32 mm
 Regalträger Jagmet für Profil mit Durchlass 32 mm



L	Cod.		
170	79160	12	1
220	79161	12	1
270	79162	12	1
320	79181	12	1
370	79163	12	1
470	79182	12	1
170	79085	12	20
220	79086	12	20
270	79087	12	20
320	79088	12	20
370	79089	12	20
470	79090	12	20

Steel / Acciaio / Stahl

Jagmet shelf support for profiles with 50 mm gap
 Supporto ripiano per armadio Jagmet profilo passo 50 mm
 Regalträger Jagmet für Profil mit Durchlass 50 mm



L	Cod.		
200	79170	12	1
250	79156	12	1
300	79157	12	1
350	79158	12	1
400	79159	12	1
200	79080	12	20
250	79081	12	20
300	79082	12	20
350	79083	12	20
400	79084	12	20

Steel / Acciaio / Stahl



Moka Wardrobe interior organising kit
Kit Cofre organizzatore interni di armadio Moka
Schrankorganisator-Kit Moka



Module	Cod.		
600	70888	13	1

Aluminium, wood, plastic and steel
Alluminio, legno, tecnoplastica e acciaio
Aluminium, Holz, Kunststoff und Stahl



Moka pull out metal drawer kit
Kit cassetto metallico Moka
Metallshubladen-Kit Moka



Module	Cod.		
600	70879	13	1
800	70880	13	1
900	70881	13	1

Aluminium, plastic and steel
Alluminio, tecnoplastica e acciaio
Aluminium, Kunststoff und Stahl



Moka jewelry organizer drawer kit for inside wardrobe
Kit cassetto portagioielli per interni di armadio Moka
Schmuckschubladen-Kit für Schränke Moka



Module	Cod.		
600	70885	13	1
800	70886	13	1
900	70887	13	1

Aluminium, wood, plastic and steel
Alluminio, legno, tecnoplastica e acciaio
Aluminium, Holz, Kunststoff und Stahl



Moka kit with runners, clothing basket and auxiliary trays for 600 mm unit
Kit di guide, cesto per biancheria e vaschette ausiliari Moka per modulo 600 mm
Kit aus Führungen, Wäschekorb und Hilfsablagen Moka für Modul 600 mm



Module	Cod.		
600	70889	13	1

Aluminium, plastic and tissue
Alluminio, tecnoplastica e tessuto
Aluminium, Kunststoff und Stoff



Moka pull out wire drawer kit
Kit cassetto in filo metallico Moka
Drahtschubladen-Kit Moka



Module	Cod.		
600	70876	13	1
800	70877	13	1
900	70878	13	1

Aluminium, plastic and steel
Alluminio, tecnoplastica e acciaio
Aluminium, Kunststoff und Stahl



Moka Pull out trouser rack kit
Kit porta pantaloni Moka
Hosenbügel-Kit Moka



Module	Cod.		
600	70890	13	1
800	70891	13	1
900	70892	13	1

Aluminium, plastic and steel
Alluminio, tecnoplastica e acciaio
Aluminium, Kunststoff und Stahl



Moka pull out shoe rack kit
Kit cassetto porta scarpe Moka
Schuhfach-Kit Moka

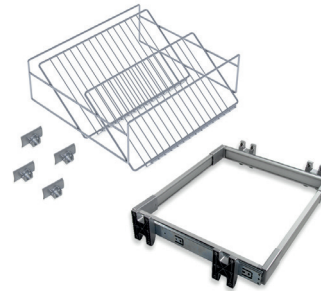


Module	Cod.		
600	70882	13	1
800	70883	13	1
900	70884	13	1

Aluminium, plastic and steel
Alluminio, tecnoplastica e acciaio
Aluminium, Kunststoff und Stahl



Keeper pull out shoe rack kit
Kit porta scarpe estraibile Keeper
Ausziehbares Schuhfach-Kit Keeper



Module	Cod.		
600	70663	62	1
800	70664	62	1
900	70665	62	1

Aluminium, plastic and steel
Alluminio, tecnoplastica e acciaio
Aluminium, Kunststoff und Stahl

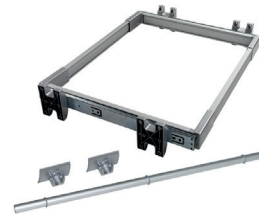
Keeper metal drawer kit
Kit cassetto metallico Keeper
Metallschubladen-Kit Keeper



Module	Cod.		
600	70660	62	1
800	70661	62	1
900	70662	62	1

Aluminium, plastic and steel
Alluminio, tecnoplastica e acciaio
Aluminium, Kunststoff und Stahl

Keeper pull out trouser hanger kit
Kit porta pantaloni Keeper
Hosenbügel-Kit Keeper



Module	Cod.		
600	70666	62	1
800	70667	62	1
900	70668	62	1

Aluminium, plastic and steel
Alluminio, tecnoplastica e acciaio
Aluminium, Kunststoff und Stahl

Other wardrobe accessories / Altri accessori per armadio / Weitere Accessoires für Schränke

Moka extractable lateral tie rack
Porta cravatte laterale estraibile Moka
Ausziehbarer seitlicher Krawattenhalter Moka



Cod.		
69388	13	1

Aluminium and plastic
Alluminio etecnoplastica
Aluminium und
Kunststoff



Moka extractable mirror for inside wardrobe
Specchio estraibile per interni di armadio Moka
Ausziehbarer Innenspiegel für Schränke Moka



Side	Cod.		
1.130 x 440	69386	13	1

Steel and plastic / Acciaio e tecnoplastica / Stahl und Kunststoff



Keeper extractable mirror for inside wardrobe
Specchio estraibile per interni di armadio Keeper
Ausziehbarer Innenspiegel für Schränke Keeper



Side	Cod.		
900 x 440	70619	62	1

Aluminium, glass and steel /
Alluminio, vetro e acciaio / Aluminium, Glas
und Stahl

Keeper extractable lateral tie rack
Porta cravatte laterale estraibile Keeper
Ausziehbarer seitlicher Krawattenhalter Keeper



Cod.		
79138	62	1

Aluminium and plastic
/ Alluminio etecnoplastica / Aluminium und
Kunststoff

Keeper extractable lateral belt holder
Porta cinture laterale estraibile Keeper
Ausziehbarer seitlicher Gürtelhalter Keeper



Cod.			
79139	62	1	

Aluminium and plastic
/ Alluminio e tecnoplastica / Aluminium und Kunststoff

Self pull-out lateral tie
Porta cravatte laterale estraibile Self
Ausziehbarer seitlicher Krawattenhalter Self



Cod.			
62110	25	1	

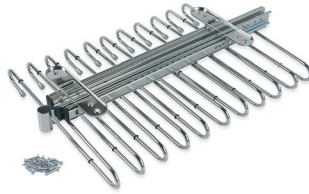
Steel and plastic /
Acciaio e tecnoplastica
/ Stahl und Kunststoff

Trouser rack / Porta pantaloni / Hosenbügel

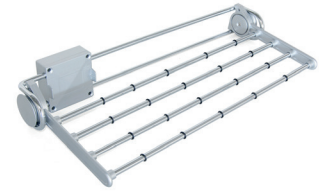
pull-out trouser rack
Porta pantaloni estraibile
Ausziehbarer Hosenbügel



Self pull-out trouser rack
Porta pantaloni estraibile Self
Ausziehbarer Hosenbügel Self



Self pull-out lateral trouser rack
Porta pantaloni laterale estraibile Self
Ausziehbarer seitlicher Hosenbügel Self



Hand	Cod.			
Left	69128	13	25	1
Right	69234	13	25	1

Steel and plastic / Acciaio e tecnoplastica / Stahl und Kunststoff

Cod.			
70178	11	1	

Steel and plastic /
Acciaio e tecnoplastica
/ Stahl und Kunststoff

Cod.			
62111	25	1	

Steel and plastic /
Acciaio e tecnoplastica
/ Stahl und Kunststoff

Shoes rack / Porta scarpe / Schuhfächer

Moka pull out lateral shoe rack kit
Porta scarpe laterale estraibile Moka
Ausziehbares seitliches Schuhfach Moka



Hand	Cod.			
Left	69384	13	1	
Right	69385	13	1	

Steel / Acciaio / Stahl



Moka pull out shoe rack drawer kit
Kit cassetto porta scarpe estraibile Moka
Ausziehbare Schuhschublade Moka



Module	Cod.			
600	69360	13	1	
800	69361	13	1	
900	69362	13	1	

Steel / Acciaio / Stahl



Keeper extractable lateral shoe rack
Porta scarpe laterale estraibile Keeper
Ausziehbares seitliches Schuhfach Keeper



Cod.			
79137	25	1	

Steel and plastic /
Acciaio e tecnoplastica
/ Stahl und Kunststoff

Self shoe rack for inside wardrobe
Porta scarpe per interni di armadio Self
Schuhfach Self für Schränke




Cod.			
62112	25	1	

Steel and plastic /
Acciaio e tecnoplastica
/ Stahl und Kunststoff





See our section of fittings for closet
 Guarda la nostra sezione di ferramenta per armadio **P. 26** 
 Sehen Sie sich unsere Beschläge für Schrank

Lighting
Illuminazione
Beleuchtung



Volans LED spotlight with natural light
Faretto LED Volans con luce naturale
LED-Anbauleuchte Volans mit natürlichem Licht



Lumen	WATT	Colour	LEDs	Cod.	
250 lm	4 W	4.000 K	1	50532	62

Aluminium and plastic / Alluminio e tecnoplastica / Aluminium und Kunststoff



Crux-in LED spotlight for embedding with cool light
Faretto LED Crux-in da incasso a luce fredda
LED-Einbauleuchte Crux-in mit kaltem Licht



Lumen	WATT	Colour	LEDs	Cod.	
110 lm	1,8 W	6.000 K	24	59152	25 51
127 lm	1,8 W	4.500 K	24	59153	- 51

Plastic / Tecnoplastica / Kunststoff



Crux-in LED spotlight with support and cool light
Faretto LED Crux-in con supporto a luce fredda
LED-Spot Crux-in mit Stütze und kaltem Licht



Lumen	WATT	Colour	LEDs	Cod.	
110 lm	1,8 W	6.000 K	24	50729	25 51
127 lm	1,8 W	4.500 K	24	50730	- 51

Plastic / Tecnoplastica / Kunststoff



Sunled LED spotlight for embedding with cool white light
Faretto LED Sunled ad incasso con luce fredda
LED-Einbauleuchte Sunled mit kaltem Licht



Lumen	WATT	Colour	LEDs	Cod.	
300 lm	3,8 W	6.000 K	15	51450	25

Plastic / Tecnoplastica / Kunststoff



Sunled LED semi-embedded spotlight with cool light
Faretto LED Sunled a semincasso con luce fredda
LED-Einbauleuchte Sunled mit kaltem Licht



Lumen	WATT	Colour	LEDs	Cod.	
300 lm	3,8 W	6.500 K	15	51452	25

Plastic / Tecnoplastica / Kunststoff



Sunled LED surface spotlight with cool light
Faretto LED Sunled da superficie con luce fredda
LED-Anbauleuchte Sunled mit kaltem Licht



Lumen	WATT	Colour	LEDs	Cod.	
300 lm	3,8 W	6.000 K	15	51451	25

Plastic / Tecnoplastica / Kunststoff

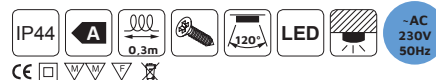


Sagittarius LED lamp over mirror 40 mm, cool light
 Applique LED per specchio da bagno Sagittarius 40 mm a luce fredda
 LED-Anbauleuchte für Badspiegel Sagittarius 40 mm mit kaltem Licht

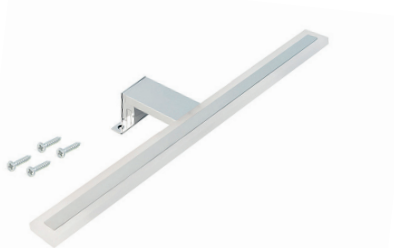


A	Lumen	WATT	Colour	LEDs	Cod.	
40	380 lm	5 W	6.000 K	30	51457	11

Aluminium and plastic / Alluminio eteplastica / Aluminium und Kunststoff



Sagittarius LED lamp over mirror, cool light
 Applique LED per specchio da bagno Sagittarius, luce fredda
 LED-Anbauleuchte für Badspiegel Sagittarius mit kaltem Licht

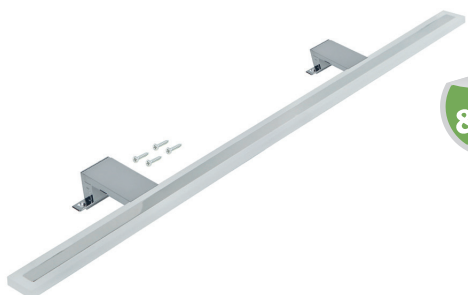


A	Lumen	WATT	Colour	LEDs	Cod.	
300	550 lm	7 W	6.000 K	60	51458	11
450	530 lm	7 W	6.000 K	60	51459	11

Aluminium and plastic / Alluminio eteplastica / Aluminium und Kunststoff

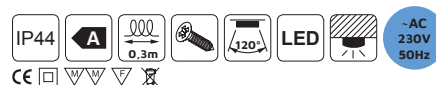


Sagittarius LED lamp over mirror 800 mm, cool light
 Applique LED per specchio da bagno Sagittarius 800 mm a luce fredda
 LED-Anbauleuchte für Badspiegel Sagittarius 800 mm mit kaltem Licht

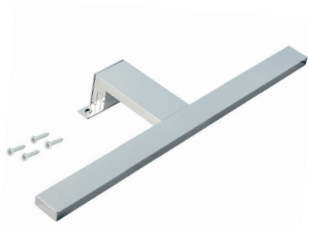


A	Lumen	WATT	Colour	LEDs	Cod.	
800	900 lm	14 W	6.000 K	120	51461	11

Aluminium and plastic / Alluminio eteplastica / Aluminium und Kunststoff



Aquarius LED lamp over mirror, cool light
 Applique LED per specchio da bagno Aquarius, luce fredda
 LED-Anbauleuchte für Badspiegel Aquarius mit kaltem Licht

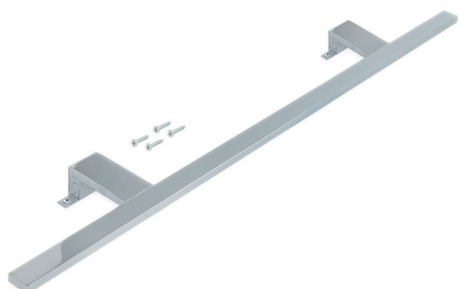


A	Lumen	WATT	Colour	LEDs	Cod.	
300	520 lm	7 W	6.000 K	60	51453	11
450	480 lm	7 W	6.000 K	60	51454	11

Aluminium and plastic / Alluminio eteplastica / Aluminium und Kunststoff



Aquarius LED lamp over mirror 800 mm, cool light
 Applique LED per specchio da bagno Aquarius 800 mm a luce fredda
 LED-Anbauleuchte für Badspiegel Aquarius 800 mm mit kaltem Licht



A	Lumen	WATT	Colour	LEDs	Cod.	
800	800 lm	14 W	6.000 K	120	51456	11

Aluminium and plastic / Alluminio eteplastica / Aluminium und Kunststoff

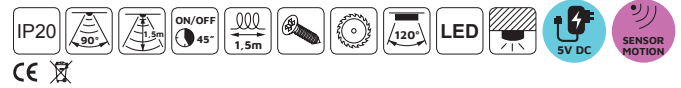


Castor Hanging wardrobe bar with LED light, removable battery and motion sensor
 Barra appendibili per armadi Castor con luce LED, batteria rimovibile e sensore di movimento
 Schrankstange Castor mit LED-Licht, herausnehmbarer Batterie und Bewegungssensor



A	Lumen	WATT	Colour	LEDs	Cod.			
558	30 lm	0,6 W	4.000 K	30	50740	13	62	1
708	35 lm	0,7 W	4.000 K	45	50741	13	62	1
858	45 lm	0,9 W	4.000 K	60	50742	13	62	1
1.008	50 lm	1 W	4.000 K	75	50743	13	62	1
1.158	55 lm	1,2 W	4.000 K	90	50744	13	62	1

Aluminium and plastic / Alluminio eteplastica / Aluminium und Kunststoff



Polux Hanging wardrobe bar with LED light with motion sensor
 Barra appendibili per armadi Polux con luce LED con sensore di movimento
 Schrankstange Polux mit LED-Licht mit Bewegungssensor



A	Lumen	WATT	Colour	LEDs	Cod.			
558	125 lm	2,6 W	4.000 K	32	50745	62		1
708	160 lm	3,3 W	4.000 K	41	50746	62		1
858	190 lm	4 W	4.000 K	50	50747	62		1
1.008	230 lm	4,8 W	4.000 K	59	50748	62		1
1.158	260 lm	5,5 W	4.000 K	68	50749	62		1

Aluminium and plastic / Alluminio eteplastica / Aluminium und Kunststoff



Constant-voltage converter for LED lights
 Convertitore di tensione costante per illuminazioni LED
 Konstant-Spannungswandler für LED-Leuchtkörper



WATT	A	B	C	Input	Output	Cod.		
6 W	17	96	41	100-240V AC - 50-60Hz	12V DC	70809	20	10
15 W	17	96	41	100-240V AC - 50-60Hz	12V DC	70014	20	10
30 W	31	120	53	100-240V AC - 50-60Hz	12V DC	70013	20	10
50 W	31	120	53	100-240V AC - 50-60Hz	12V DC	50084	20	10
72 W	38	153	60	100-240V AC - 50-60Hz	12V DC	50085	20	10

Plastic / Tecnoplastica / Kunststoff



Constant-voltage converter for LED lights
 Convertitore di tensione costante per illuminazioni LED
 Konstant-Spannungswandler für LED-Leuchtkörper



WATT	A	B	C	Input	Output	Cod.		
100 W	30	129	97	100-240V AC - 50-60Hz	12V DC	52033	20	5
200 W	30	215	115	100-240V AC - 50-60Hz	12V DC	52034	20	5

Steel / Acciaio / Stahl



Diflex LED batten with touch sensor and cool light
 Applique LED Diflex con sensore touch a luce fredda
 LED-Anbauleuchte Diflex mit Touch-Sensor und kaltem Licht



A	Lumen	WATT	Colour	LEDs	Cod.		
350	101 lm	2,4 W	6.000 K	27	50727	62	1
550	182 lm	4,3 W	6.000 K	54	50728	62	1

Aluminium and plastic / Alluminio etecnoplastica / Aluminium und Kunststoff

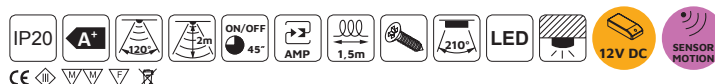


Persei LED batten with movement sensor and cool white light
 Applique LED Persei con sensore di movimento a luce fredda
 LED-Anbauleuchte Persei mit Bewegungssensor und kaltem Licht



A	Lumen	WATT	Colour	LEDs	Cod.		
395	225 lm	2,7 W	6.000 K	27	50720	62	1
595	305 lm	4,2 W	6.000 K	42	50721	62	1
395	211 lm	2,7 W	3.000 K	27	50722	62	1
595	286 lm	4,2 W	3.000 K	42	50726	62	1

Aluminium and plastic / Alluminio etecnoplastica / Aluminium und Kunststoff

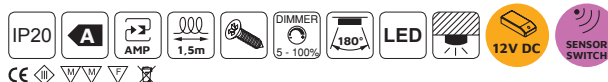


Kuma LED reading light, square, flexible arm, 2 USB and voltage converter
 Applique quadrato Kuma con braccio flessibile e 2 porte USB, e convertitore di tensione costante
 LED-Wandleuchte quadratisch Kuma mit flexiblem Arm, 2 USB-Anschlüssen und Konstant-Spannungswandler



Lumen	WATT	Colour	LEDs	Cod.		
285 lm	5 W	4.000 K	24	50147	15	17
285 lm	5 W	4.000 K	24	50148	15	17

Plastic / Tecnoplastica / Kunststoff

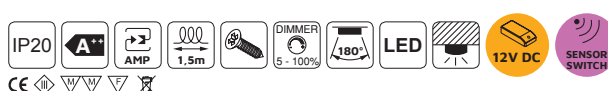


Kuma LED reading light with flexible arm, 2 USB ports and voltage converter
 Applique rotonda Kuma con braccio flessibile, 2 porte USB e convertitore di tensione costante
 LED-Wandleuchte rund Kuma mit flexiblem Arm, 2 USB-Anschlüssen und Konstant-Spannungswandler



Lumen	WATT	Colour	LEDs	Cod.		
150 lm	2,1 W	4.000 K	16	50146	15	17
150 lm	2,1 W	4.000 K	16	50149	15	17

Plastic / Tecnoplastica / Kunststoff



Hidra LED spotlight ultra-slim with 15W power converter
 Luminarie LED estrafine Hidra con convertitore da 15W
 Extraschmale LED-Einbauleuchten Hidra mit Konverter 15W



Lumen	WATT	Colour	LEDs	Cod.	
130 lm	2 W	6.000 K	24	50736 : 25	3

Aluminium and plastic / Alluminio etecnoplastica / Aluminium und Kunststoff



Merak LED spotlight with 6W power converter
 Luminarie LED Merak con convertitore da 6W
 LED-Anbauleuchte Merak mit Konverter 6W



Lumen	WATT	Colour	LEDs	Cod.	
60 lm	0,8 W	4.000 K	1	50735 : 25	6

Plastic / Tecnoplastica / Kunststoff



Polaris directional LED lights with 15W power converter
 Luminarie LED orientabili Polaris con convertitore da 15W
 LED-Einbauleuchte ausrichtbar Polaris mit Konverter 15W



Lumen	WATT	Colour	LEDs	Cod.	
95 lm	1,2 W	4.000 K	1	50738 : 62	6

Aluminium / Alluminio / Aluminium



Alcor embeddable LED lights with 15W power converter
 Luce LED ad incasso Alcor con convertitore da 15W
 LED-Einbauleuchte Alcor mit Konverter 15W



Lumen	WATT	Colour	LEDs	Cod.	
95 lm	1,2 W	4.000 K	1	50739 : 62	6

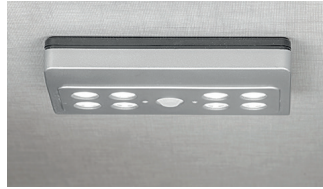
Aluminium / Alluminio / Aluminium



Battery operated LED lights

Illuminazione LED con batteria / LED-Beleuchtung mit Batteriebetrieb

Draco battery-powered LED light with movement sensor and cool light
 Luce LED a batterie Draco con sensore di movimento e luce fredda
 LED-Anbauleuchte batteriebetrieben Draco mit Bewegungssensor und kaltem Licht



Lumen	WATT	Colour	LEDs	Cod.	
45 lm	0,48 W	6.500 K	8	50530	25

Plastic / Tecnoplastica / Kunststoff



Drawled Battery-powered LED light for inside drawers with vibration sensor and cool light
 Luce LED a batterie per interno di cassetti Drawled con sensore a vibrazione e luce fredda
 LED-Einbauleuchte batteriebetrieben für Schubladeninnenseiten Drawled mit Vibrationsensor und kaltem Licht



Lumen	WATT	Colour	LEDs	Cod.	
28 lm	0,6 W	7.000 K	4	50063	25

Plastic / Tecnoplastica / Kunststoff



Phoenix LED light with movement sensor and cool light
 Luce LED a batterie Phoenix con sensore di movimento e luce fredda
 LED-Anbauleuchte batteriebetrieben Phoenix mit Bewegungssensor und kaltem Licht



Lumen	WATT	Colour	LEDs	Cod.	
30 lm	0,6 W	7.000 K	6	50041	25

Plastic / Tecnoplastica / Kunststoff



Kraz Rechargeable LED light with movement sensor
 Luminaria LED ricaricabile Kraz con sensore di movimento
 LED-Anbauleuchte aufladbar Kraz mit Bewegungssensor



Lumen	WATT	Colour	LEDs	Cod.	
85 lm	1 W	4.000 K	9	50286	25

Plastic / Tecnoplastica / Kunststoff



Crater Rechargeable LED light with movement sensor
 Luminaria LED ricaricabile Crater con sensore di movimento
 LED-Anbauleuchte aufladbar Crater mit Bewegungssensor



Lumen	WATT	Colour	LEDs	Cod.	
110 lm	1 W	4.000 K	28	50239	25

Plastic / Tecnoplastica / Kunststoff



Switches and sensors Interruttori e sensori / Schalter und Sensoren

Switch for embedding
Interruttore da incasso
Lichtschalter zum Einbetten



Cod.	15	17	25
96381	15	17	1
50710	15	17	10

Plastic / Tecnoplastica / Kunststoff

CE

Wardrobe door switch
Interruttore per anta di armadio
Lichtschalter für Schranktür



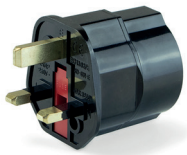
Cod.	15	17	25
96424	15	17	1
50709	15	17	10

Plastic / Tecnoplastica / Kunststoff

CE

Chargers and connectors Caricatori e connettori / Ladegeräte und Stecker

EU plug adapted for the UK
Adattatore spina UE per UK
Zwischenstecker für Anschlüsse EU zu GB

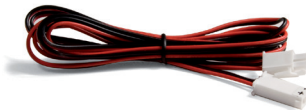


Cod.	17	25
50106	17	1

Plastic / Tecnoplastica / Kunststoff

CE

12V AMP extension cable
Prolunga AMP 12V
12V AMP Verlängerungskabel



Cod.	17	25
92698	17	1

Plastic / Tecnoplastica / Kunststoff

AMP

CE

UK plug adapted for the EU
Adattatore spina UK per UE
Zwischenstecker für Anschlüsse GB zu EU



Cod.	17	25
50107	17	1

Plastic / Tecnoplastica / Kunststoff

CE

Plug Round connector with 2 USB ports for embedding into furniture
Connettore rotondo Plugy con 2 porte USB a incasso nel mobile
USB-Ladeanschluss rund Plugy mit 2 USB-Anschlüssen zum Einbetten in Möbel



Input	Output	Cod.	14	25
12V DC	5V DC	50706	14	25

Plastic / Tecnoplastica / Kunststoff



Plug Square connector with 2 USB ports for embedding into furniture
Connettore quadrato Plugy con 2 porte USB ad incastro nel mobile
Ladegerät quadratisch Plugy mit 2 USB-Anschlüssen zur Einbettung in Möbel



Input	Output	Cod.	14	25
12V DC	5V DC	50055	14	25

Plastic / Tecnoplastica / Kunststoff

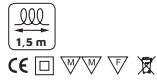


Airtop wireless charger for mobiles
 Caricatore wireless per cellulari Airtop
 Drahtloses Ladegerät für Smartphones Airtop



Cod.		1	
50175	17	1	

Plastic / Tecnoplastica / Kunststoff

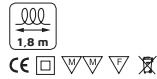


Vertikal Retractable 3 plug connector with 2 USB for embedding
 Torretta con 3 prese Vertikal con 2 usb, a scomparsa, EU
 3-Fach-Steckdose Vertikal mit 2 USB-Anschlüssen, versenkbar, ausziehbar



Type	Cod.	1	
EU	50099	25	1
UK	50096	25	1

Plastic / Tecnoplastica / Kunststoff

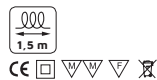


Multi-plug connector Atom for embedding in desk
 Multipresa Atom da incasso nella scrivania
 Mehrfachstecker Atom für Schreibtisch



Type	Cod.	1	
EU	50297	14	25

Steel, plastic and zamak / Acciaio, tecnoplasticae e zama / Stahl, Kunststoff und zamak



Multi-plug connector Atom for embedding in desk
 Multipresa Atom da incasso nella scrivania
 Mehrfachstecker Atom für Schreibtisch



Type	Cod.	1	
EU	50295	14	25

Steel, plastic and zamak / Acciaio, tecnoplasticae e zama / Stahl, Kunststoff und zamak



Cable organizers Passacavi / Kabelkanäle

Quadrum desk cable grommet, rectangular
Passacavi da tavolo Quadrum, rettangolare
Kabeldurchlass Quadrum für Tische, rechteckig

L	Cod.			
160 x 80	50100	62		1
160 x 80	50704	62		5
269 x 80	50124	62		1
269 x 80	50132	62		5

Aluminium / Alluminio / Aluminium



Plaswire desk cable grommet
Passacavi da tavolo Plaswire
Kabeldurchlass Plaswire für Tische

L	Cod.				
85 x 85	50125	11	12	14	1
85 x 85	50472	11	12	14	5

Plastic / Tecnoplastica / Kunststoff



Plaswire desk cable grommet
Passacavi da tavolo Plaswire
Kabeldurchlass Plaswire für Tische

L	Cod.				
152 x 61	50126	11	12	14	1
152 x 61	50473	11	12	14	5

Plastic / Tecnoplastica / Kunststoff



Circum round cable grommet
Passacavi Circum
Kabeldurchlass Circum, rund



Ø	Cod.				
60	50067	11	64		1
60	50708	11	64		8
80	50225	11	64		1
80	50732	11	64		7

Zamak / Zama / Zamak

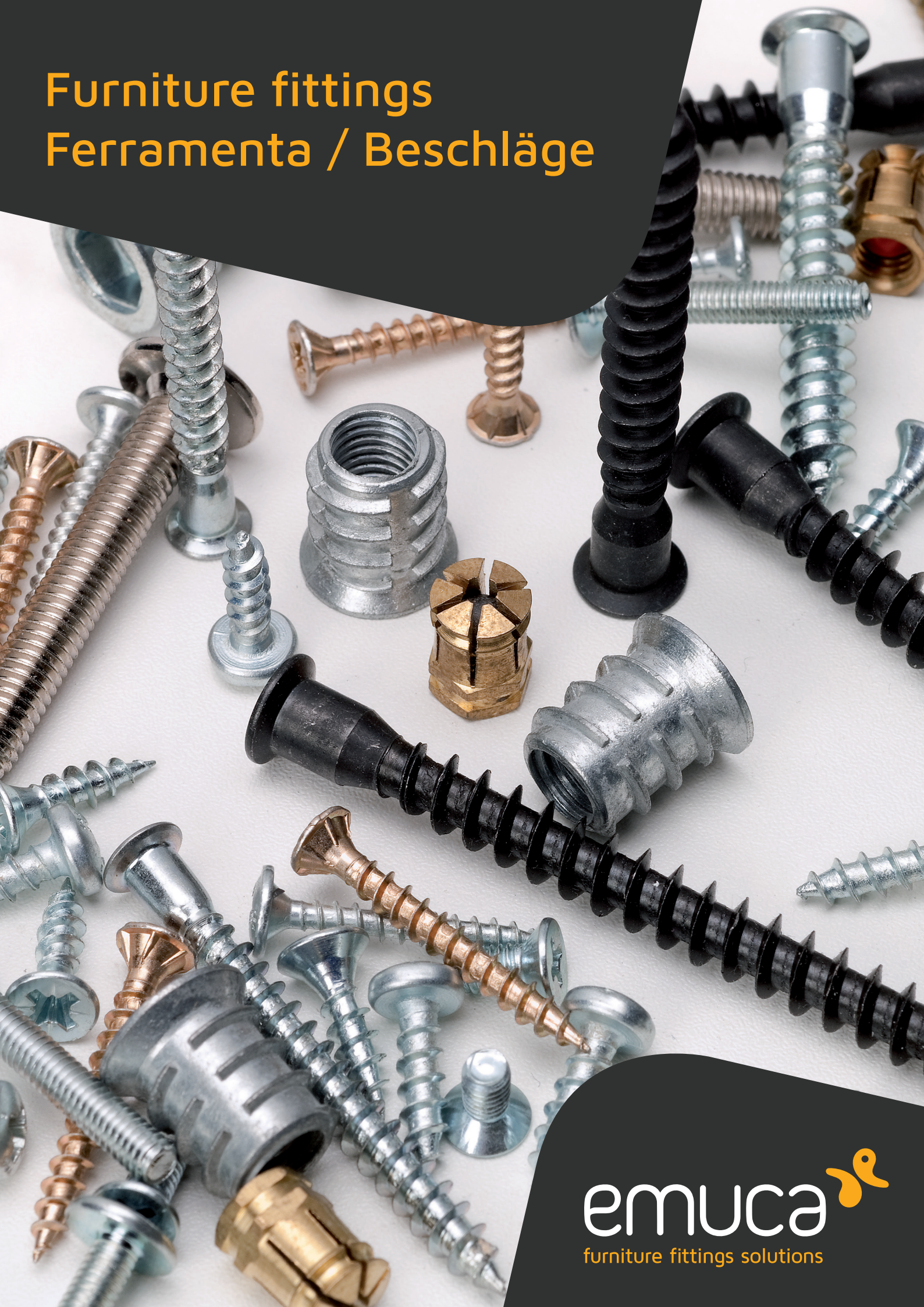
Round cable grommet
Passacavi circolare
Kabeldurchlass, rund



Ø	Cod.				
60	31963	15	17	21	20
80	31964	-	17	21	4

Plastic / Tecnoplastica / Kunststoff

Furniture fittings Ferramenta / Beschläge



Hinges and supplements Cerniere e basette / Scharniere und Zusätze

X91 Hinge with soft close, 100° opening, plates for screwing
Cerniera a scodellino X91, chiusura ammortizzata, basette con regolazione eccentrica per vite
Topfscharnier X91, sanftes Schließen, Öffnung 100°, Montageplatte zum Schrauben



Size	Cod.		Cod.	
	10133	07	2	10113 07 20
	10134	07	2	10114 07 20
	10135	07	2	10115 07 20

Steel / Acciaio / Stahl

X91 Hinge, soft close, 100° opening, Euro screw
Cerniera a scodellino X91, chiusura ammortizzata, apertura 100°, basette Euro
Topfscharnier X91, sanftes Schließen, Öffnung 100°, Montageplatte Euro



Size	Cod.		Cod.	
	10136	07	2	10116 07 20
	10137	07	2	10117 07 20
	10138	07	2	10118 07 20

Steel / Acciaio / Stahl

X91N Hinge, 100° opening, plates for screwing
Cerniera a scodellino X91N, apertura 100°, basetta a vite
Topfscharnier X91N, Öffnung 100°, Montageplatte zum Schrauben



Size	Cod.	
	10110 07	20
	10111 07	20
	10112 07	20

Steel / Acciaio / Stahl

X91N Hinge, 100° opening, with Euro screw
Cerniera a scodellino X91N, apertura 100°, basette Euro
Topfscharnier X91N, Öffnung 100°, Montageplatte Euro



Size	Cod.	
	10124 07	20
	10125 07	20
	10126 07	20

Steel / Acciaio / Stahl

X91 Hinge, soft close, 90° angular arm, plates for screwing

Cerniera a scodellino X91, chiusura ammortizzata, braccio angolare 90°, bassetta a vite
Topfscharnier X91, sanftes Schließen, Winkelarm 90°, Montageplatte zum Schrauben



Angle	Cod.		
90°	10146	07	2
90°	10120	07	10

Steel / Acciaio / Stahl



X91 Hinge, soft close, 90° angular arm, Euro screw

Cerniera a scodellino X91, chiusura ammortizzata, braccio angolare 90°, bassetta Euro
Topfscharnier X91, sanftes Schließen, Winkelarm 90°, Montageplatte Euro



Angle	Cod.		
90°	10148	07	2
90°	10123	07	10

Steel / Acciaio / Stahl



X91 Hinge, soft close, 45° angular arm, plates for screwing

Cerniera a scodellino X91, chiusura ammortizzata, braccio angolare 45°, bassetta a vite
Topfscharnier X91, sanftes Schließen, Winkelarm 45°, Montageplatte zum Schrauben



Angle	Cod.		
45°	10145	07	2
45°	10119	07	10

Steel / Acciaio / Stahl



X91 Hinge, soft close, 45° angular arm, Euro screw

Cerniera a scodellino X91, chiusura ammortizzata, braccio angolare 45°, bassetta Euro
Topfscharnier X91, sanftes Schließen, Winkelarm 45°, Montageplatte Euro



Angle	Cod.		
45°	10147	07	2
45°	10122	07	10

Steel / Acciaio / Stahl



X91 Hinge, soft close, 165° opening, plates for screwing

Cerniera a scodellino X91, chiusura ammortizzata, apertura 165°, bassetta a vite
Topfscharnier X91, sanftes Schließen, Öffnung 165°, Montageplatte zum Schrauben



Size	Cod.			Cod.		
	10149	07	2	10127	07	20
	10150	07	2	10128	07	20
	10151	07	2	10129	07	20

Steel / Acciaio / Stahl

X91 Hinge, soft close, 165° opening, Euro screw

Cerniera a scodellino X91, chiusura ammortizzata, apertura 165°, bassetta Euro
Topfscharnier X91, sanftes Schließen, Öffnung 165°, Montageplatte Euro



Size	Cod.			Cod.		
	10152	07	2	10130	07	20
	10153	07	2	10131	07	20
	10154	07	2	10132	07	20

Steel / Acciaio / Stahl

X95 Hinge, 110° opening and plates for screwing
 Cerniera X95, apertura 110° e basetta a vite
 Topfscharnier X95, Öffnung 110°, Montageplatte zum Schrauben



Size	Cod.		
	10174	07	20
	10175	07	20
	10176	07	20

Steel / Acciaio / Stahl

X95 Hinge, 110° opening and Euro screws
 Cerniera X95 con apertura 110° e basetta Euro
 Topfscharnier X95, Öffnung 110°, Montageplatte Euro



Size	Cod.		
	10177	07	20
	10178	07	20
	10179	07	20

Steel / Acciaio / Stahl

C50 Hinge, 105° opening and plates for screwing
 Cerniera C50 apertura 105° e basetta a vite
 Topfscharnier C50, Öffnung 105°, Montageplatte zum Schrauben



Size	Cod.		Cod.			
	10187	07	2	10186	07	20

Steel / Acciaio / Stahl

X10 Hinge, 95° opening, plates for screwing
 Cerniera a scodellino X10, apertura 95°, basette a vite
 Topfscharnier X10, Öffnung 95°, Montageplatte zum Schrauben



Size	Cod.		
	10161	07	20
	10162	07	20
	10163	07	20

Steel / Acciaio / Stahl

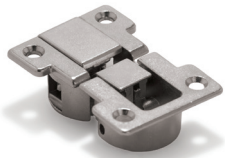
X 10 Hinge, 95° opening, Euro screw
 Cerniera a scodellino X10, apertura 95°, basette Euro
 Topfscharnier X10, Öffnung 95°, Montageplatte Euro



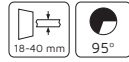
Size	Cod.		
	10164	07	20
	10165	07	20
	10166	07	20

Steel / Acciaio / Stahl

Hinge Ankor
Cerniera Ankor
Topfscharnier Ankor



Cod.			
10188	07	2	
Zamak / Zama / Zamak			



Hinge Secreter
Cerniera Secreter
Topfscharnier Secreter



Cod.			
10189	07	2	
Zamak / Zama / Zamak			

Batch hinges for glass door, inner edge
Cerniera per anta in vetro, lato interno
Glastürscharnier-Set, Innenkante

Cod.				
10158	11	64	1	
Zamak / Zama / Zamak				



Batch hinges for glass door, central part
Cerniera per anta in vetro, ubicazione centrale
Glastürscharnier-Set, Mitte

Cod.				
10159	11	64	1	
Zamak / Zama / Zamak				



Batch Interior hinge with cover for glass doors
Cerniera interiore per porta in vetro
Glastürscharnier-Set, Innenseite

Cod.				
10160	25	1		
Steel / Acciaio / Stahl				



Locks and latches Serrature e chiusure / Schlösser und Verschlüsse

Cylinder lock for drawer
Serratura per cassetto
Zylinderschloss für Schublade



Cod.			
20312	11	1	
Zamak / Zama / Zamak			

Cylinder lock for glass door
Serratura a cilindro per anta in vetro
Zylinderschloss für Glastür



Cod.			
20310	11	1	
Zamak / Zama / Zamak			

Cylinder lock for glass door
Serratura a cilindro per anta in vetro
Zylinderschloss für Glastür



Cod.			
20311	11	1	
Zamak / Zama / Zamak			

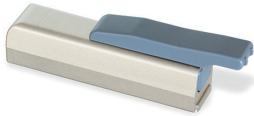
Revalock magnetic safety lock for doors and drawers
Chiusura magnetica di sicurezza per mobile Revalock
Magnetischer Sicherheitsverschluss für Möbel Revalock



Cod.			
89329	20	1	
Plastic / Tecnoplastica / Kunststoff			



Mildy shock absorber piston for hinged doors
 Pistone ammortizzatore per ante Mildy
 Türdämpfer für Scharnertüren Mildy



Cod.		
12759	24	10
Plastic / Tecnoplastica / Kunststoff		

Minidamp 2 Shock absorber pistons for hinged door
 Pistone per porta a battente Minidamp 2
 Türdämpfer für Scharnertüren Minidamp 2



Cod.		
12750	21	10
Plastic / Tecnoplastica / Kunststoff		

Push Latch Latches for doors
 Chiusura push per mobile Push Latch
 Verschluss für Türen Push Latch



Cod.		
12779	21	10
Plastic / Tecnoplastica / Kunststoff		

Push Latch magnetic closing for doors
 Chiusura magnetica per ante Push Latch
 Magnetverschluss für Türen Push Latch



Cod.		
12778	21	10
Steel and plastic / Acciaio e tecnoplastica / Stahl und Kunststoff		

Push Latch Latches for doors
 Chiusura push per mobile Push Latch
 Verschluss für Türen Push Latch



Cod.		
12752	21	10
Plastic / Tecnoplastica / Kunststoff		

Push Latch magnetic closing for doors
 Chiusura magnetica per ante Push Latch
 Magnetverschluss für Türen Push Latch



Cod.		
12780	21	10
Steel and plastic / Acciaio e tecnoplastica / Stahl und Kunststoff		

Pushmatic Latches for doors
 Chiusura push per mobile Pushmatic
 Verschluss für Türen Pushmatic



Cod.		
12777	21	10
Plastic / Tecnoplastica / Kunststoff		



Magnetic closing for doors
 Chiusura magnetica per ante
 Magnetverschluss für Türen



Cod.		
12753	15	20
Steel and plastic / Acciaio e tecnoplastica / Stahl und Kunststoff		



Push Latch Latches for doors
Chiusura push per mobile Push Latch
Verschluss für Türen Push Latch



Cod. 				
12781	21	23	10	
Plastic / Tecnoplastica / Kunststoff				



Push Latch magnetic closing for doors
Chiusura magnetica per ante Push Latch
Magnetverschluss für Türen Push Latch



Cod. 				
12782	21	23	10	
Steel and plastic / Acciaio e tecnoplastica / Stahl und Kunststoff				



Push Latch Latches for doors
Chiusura push per mobile Push Latch
Verschluss für Türen Push Latch



Cod. 				
12783	21	23	10	
Plastic / Tecnoplastica / Kunststoff				



Push Latch magnetic closing for doors
Chiusura magnetica per ante Push Latch
Magnetverschluss für Türen Push Latch



Cod. 				
12784	21	23	10	
Steel and plastic / Acciaio e tecnoplastica / Stahl und Kunststoff				



Push Latch Latches for doors
Chiusura push per mobile Push Latch
Verschluss für Türen Push Latch

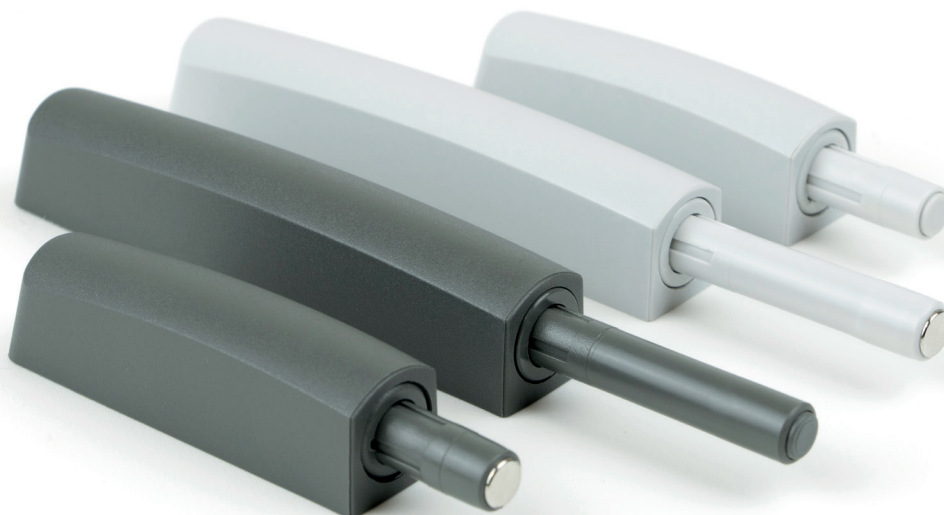


Cod. 				
12785	21	23	10	
Plastic / Tecnoplastica / Kunststoff				

Push Latch magnetic closing for doors
Chiusura magnetica per ante Push Latch
Magnetverschluss für Türen Push Latch



Cod. 				
12786	21	23	10	
Steel and plastic / Acciaio e tecnoplastica / Stahl und Kunststoff				



Fast Latch lock for furniture
Chiusura a cricchetto per mobile
Türschnäpper Fast Latch für Möbel



Cod.			
12788	15	4	
12754	15	10	

Steel and plastic / Acciaio e tecnoplastica / Stahl und Kunststoff

Silent latch for furniture
Chiusura a battente silenziosa per mobile
Leiser Türschnäpper für Möbel



Cod.			
12755	05	10	

Steel and plastic / Acciaio e tecnoplastica / Stahl und Kunststoff

Fastener lever locks for furniture
Chiusura a leva per mobile
Hebelverschluss Spanner für Möbel



Cod.			
10155	05	10	

Steel / Acciaio / Stahl

Fast Latch lock for furniture
Chiusura a cricchetto per mobile
Türschnäpper Tip Latch für Möbel



Cod.			
12787	05	10	

Steel and plastic / Acciaio e tecnoplastica / Stahl und Kunststoff

Hangers for high units Appendiabiti per moduli alti / Aufhänger für hohe Module

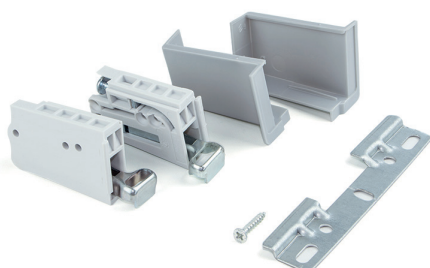
Levelup hidden wardrobe hangers with plate
Reggipensile a scomparsa per anta di armadio Levelup con piastrina
träger für hohe Module Levelup mit Flacheisen



Cod.			
40086	05	1	

Steel / Acciaio / Stahl

Hook hanger for high units
Reggipensile per moduli alti Hook
Aufhänger für hohe Module Hook



Cod.			
40267	21	1	

Steel and plastic / Acciaio e tecnoplastica / Stahl und Kunststoff



Eccentrics and hooks Eccentrici e agganci / Exzenter und Haken

Luna Joining clamp for shelf supports, D. 20, 13 mm
Giunzione per mensola Luna, D. 20, 13 mm
Tablarverbinder für Regale Luna, D. 20 mm, 13 mm



bolt Ø x L	Cod.			
4,2 x 11	40225	15	16	20
6 x 9	40226	15	16	20

Steel and plastic / Acciaio e tecnoplastica /
Stahl und Kunststoff

T15 cams and dowels kit with Fit bolts and caps
Kit di eccentrici T15 con perni Fit e coperture
Verbindergehäuse-Kit T15 mit Bolzen Fit und Abdeckungen



	Cod.			
13	40268	15		20
16	40269	15		20
19	40270	15		20

Steel, plastic and zamak / Acciaio,
tecnoplasticae e zama / Stahl,
Kunststoff und zamak

T15 Cams and dowels kit with bolts, D. 6 mm
Kit di eccentrici T15 con perni D. 6 mm
Verbindergehäuse-Kit T15 mit Bolzen D. 6 mm



	Cod.			
13	40200	15		20
16	40202	15		20
19	40204	15		20

Steel, plastic and zamak / Acciaio,
tecnoplasticae e zama / Stahl,
Kunststoff und zamak

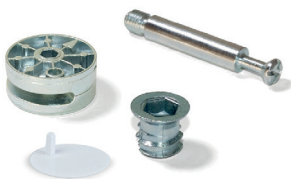
T15 Cams and dowels kit with bolts and M6 bolt
Kit di eccentrici T15 con perni e bussole
Verbindergehäuse-Kit T15 mit Bolzen und Muttern M6



	Cod.			
13	40201	15		20
16	40203	15		20
19	40205	15		20

Steel, plastic and zamak / Acciaio,
tecnoplasticae e zama / Stahl,
Kunststoff und zamak

Cams and dowels kit and bolt M8
Kit eccentrici Big con bussole e perni M8
Verbindergehäuse-Kit Big mit Bolzen und Muttern M8



Ø	Cod.			
35	40206	15		10

Steel, plastic and zamak / Acciaio,
tecnoplasticae e zama / Stahl,
Kunststoff und zamak

Concealed hinge joining system kit, D. 35 mm and M8 bolts
Kit aggancio di unione D. 35 mm, e bussola M8
Tablarverbinder-Kit D. 35 mm und Muttern M8



Ø	Cod.			
35	40207	01		10

Steel, plastic and zamak / Acciaio,
tecnoplasticae e zama / Stahl,
Kunststoff und zamak

Fix concealed hinge joining system D. 20 x 12.5 mm and D. 6 mm bolts
Kit scodellino di unione Fix D. 20 x 12,5 mm e perni D. 6 mm
Haken für die Befestigung von Regalen Fix D. 20 x 12.5 mm und Bolzen D. 6 mm



bolt Ø x L	Cod.			
6 x 8	40272	07		20
6 x 11	40273	07		20

Steel, plastic and zamak / Acciaio,
tecnoplasticae e zama / Stahl,
Kunststoff und zamak

Block System hooks for fastening shelves H 12 mm
Agganci per fissaggio di mensola Block System H 12 mm
Haken für die Befestigung von Regalen Block System H. 12 mm



H	Cod.			
12	40271	15		100

Plastic / Tecnoplastica / Kunststoff

Felt pads for furniture
 Feltrini adesivi per mobile
 Selbstklebende Möbelgleiter aus Filz

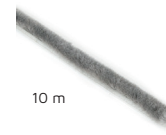
Emuca self-adhesive dust excluder for doors and windows
 Guarnizione a spazzola antipolvere autoadesiva Emuca per ante e finestre
 Selbstklebender Abdichtungstreifen mit Bürste für Türen und Fenster



Un.	Size	Cod.	16	21	Un.	Size	Cod.	16	21
150	Ø 16	20380	16	1	1.500	Ø 16	20211	16	10
150	Ø 20	20381	16	1	1.500	Ø 20	20212	16	10
108	Ø 24	20382	16	1	1.080	Ø 24	20213	16	10
63	Ø 30	20383	16	1	630	Ø 30	20214	16	10
36	Ø 34	20384	16	1	360	Ø 34	20215	16	10
36	Ø 40	20385	16	1	360	Ø 40	20216	16	10
150	20 x 20	20386	16	1	1.500	20 x 20	20217	16	10
96	25 x 25	20387	16	1	960	25 x 25	20218	16	10
63	30 x 30	20388	16	1	630	30 x 30	20219	16	10
3	100 x 250	20389	16	1	30	100 x 250	20220	16	10

Fibre / Fibra / Faser

Fibre / Fibra / Faser



10 m

H	Cod.	16	21
7	70893	21	1
9	70894	21	1
17	70895	21	1

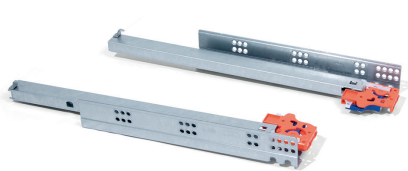
Plastic / Tecnoplastica / Kunststoff



Drawer slides
Guide per cassetti / Schubladenführungen

Set of Slippe Concealed drawer runners, soft closing, total extraction with hook
 Guide a scomparsa per cassetti Slippe, a rotelle, a chiusura soft, estrazione totale e aggancio
 Satz versteckte Führungen Slippe für Schublade, Rollschub, sanftes Schließen, Vollauszug, zum Einhängen

Set of Slippe concealed drawer runners, soft closing, total extraction
 Guide a scomparsa per cassetti Slippe, a rotelle, a chiusura soft, estrazione totale
 Satz versteckte Führungen Slippe für Schublade, Rollschub, sanftes Schließen, Vollauszug



Depth	Cod.	05	16
290	40026	05	1
340	40027	05	1
390	40028	05	1
440	40029	05	1
490	40030	05	1
540	40084	05	1
590	40085	05	1

Steel / Acciaio / Stahl



Depth	Cod.	05	16
240	40081	05	1
290	41041	05	1
340	41042	05	1
390	41043	05	1
440	41044	05	1
490	41045	05	1
540	40082	05	1
590	40083	05	1

Steel / Acciaio / Stahl



Set of Slippe concealed drawer runners, total extraction, push system
 Guide a scomparsa per cassetti Slippe, a rotelle, chiusura soft, estrazione totale, sistema push
 Satz versteckter Führungen Slippe für Schubladen, Rollschub, Vollauszug, Push-System

Set of Slippe concealed drawer runners, partial extraction, push system
 Guide a scomparsa per cassetti Slippe, a rotelle, chiusura soft, estrazione parziale, sistema push
 Satz versteckte Führungen Slippe für Schubladen, Rollschub, Teilauszug, Push-System



Depth	Cod.	05	16
240	30020	05	1
290	30021	05	1
340	30022	05	1
390	30023	05	1
440	30024	05	1
490	30025	05	1

Steel / Acciaio / Stahl



Depth	Cod.	05	16
240	41030	05	1
290	41031	05	1
340	41032	05	1
390	41033	05	1
440	41034	05	1
490	41035	05	1

Steel / Acciaio / Stahl



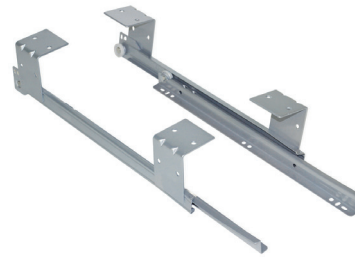
Set of Silver concealed drawer runners, soft close, partial extraction
 Guide a scomparsa per cassetti Silver, a rotelle, chiusura soft, estrazione parziale
 Satz versteckte Führungen für Schubladen Silver, Rollschub, sanftes Schließen, Teilauszug



Depth	Cod.			
240	30190	05	05	1
290	30191	05	05	1
340	30192	05	05	1
390	30193	05	05	1
440	30194	05	05	1
490	30195	05	05	1

Steel / Acciaio / Stahl

Set of ball bearing keyboard runners in steel
 Guida portatastiera a rotelle in acciaio
 Satz Rollenführungen für Tastatur, Stahl



Cod.			
30260	25	05	1

Steel / Acciaio / Stahl

Set of ball bearing drawer runner T30 with partial extraction
 Guide per cassetti, a rotelle, ad estrazione parziale T30
 Satz Führungen für Schubladen, Rollschub, nach unten schließend, mit Teilauszug T30



L	Cod.			
500	43890	12	14 25	1
550	43891	12	14 25	1
600	43892	12	14 25	1
800	43893	12	14 25	1
250	30196	12	14 25	5
300	30076	12	14 25	5
350	30077	12	14 25	5
400	30078	12	14 25	5
450	30079	12	14 25	5
500	30080	12	14 25	5
550	30197	12	14 25	5
600	30198	12	14 25	5
800	30199	12	14 25	5

Steel / Acciaio / Stahl

Soft closing system for drawer with T30 ball bearing runners
 Meccanismo di chiusura soft per cassetti con guide a rotelle T30
 Dämpfungssystem für Schubladen mit Rollschubführungen T30



L	Cod.		
250 - 300	30429	21	2
350 - 800	30430	21	2

Plastic / Tecnoplastica / Kunststoff



Set of ball bearing drawer runner, total extraction, soft close, 45 mm
 Guide per cassetti, a sfera, chiusura soft, estrazione totale, 45 mm
 Satz Führungen für Schublade, Kugelauszug, Vollauszug, sanftes Schließen, 45 mm



L	Cod.			
300	43015	05	05	1
350	43016	05	05	1
400	43017	05	05	1
450	43018	05	05	1
500	43019	05	05	1
550	43020	05	05	1
600	43021	05	05	1
650	43022	05	05	1

Steel / Acciaio / Stahl

Set of ball bearing drawer runner, total extraction, 45 mm, with brackets
 Guide per cassetti, a sfera, estrazione totale, 45 mm, con squadra
 Satz Führungen für Schubladen, Kugelauszug, Vollauszug, 45 mm, mit Winkeln



L	Cod.		
300	43004	05	1
350	43005	05	1
400	43006	05	1
450	43007	05	1
500	43008	05	1
600	43009	05	1

Steel / Acciaio / Stahl

Set of ball bearing runners with total extraction, height 45 mm
 Guide per cassetti, a sfera, ad estrazione totale, 45 mm
 Satz Führungen für Schubladen, Kugelvollauszug, 45 mm



L	Cod.			
250	42240	05		1
300	41771	05		1
350	41772	05		1
400	41773	05		1
450	41774	05		1
500	41775	05		1
600	41776	05		1
650	41777	05		1
250	30431	05		5
300	30432	05		5
350	30433	05		5
400	30434	05		5
450	30435	05		5
500	30436	05		5
600	30437	05		5
650	30438	05		5

Steel / Acciaio / Stahl

Set of ball bearing drawer runner with partial extraction, 17 mm
 Guide per cassetti, a sfera, ad estrazione parziale, 17 mm
 Satz Führungen für Schubladen, Kugelteilauszug, 17 mm



L	Cod.			
182	30095	05		5
214	30096	05		5
246	30097	05		5
278	30098	05		5
310	30099	05		5
342	30100	05		5
374	30092	05		5
438	30093	05		5

Steel / Acciaio / Stahl

Legs, feet and levellers Gambe, piedini e registrabili / Beine, Füße und Nivellierer

Adjustable table legs, D. 80 mm, Steel
 Gambe per tavolo, D. 80 mm, Acciaio
 Tischbein, D. 80 mm, Stahl



L	Cod.				
710	30481	11	25	51	1
870	30482	11	25	51	1
1.100	30483	11	25	51	1

Steel / Acciaio / Stahl

Adjustable legs with wheel and brake D. 60 mm
 Gambe regolabili con rotella e freno D. 60 mm
 Tischbein verstellbar mit Rolle und Bremse D. 60 mm



Cod.			
30616	25		1

Steel / Acciaio / Stahl

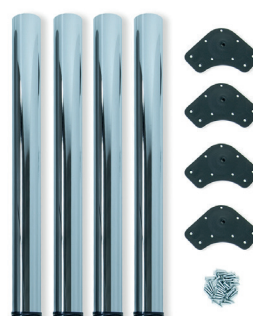
Adjustable table legs, D. 60 mm, Steel
 Gambe per tavolo, D. 60 mm, Acciaio
 Tischbein, D. 60 mm, Stahl



L	Cod.					
870	30480	11	14	25	51	1

Steel / Acciaio / Stahl

Adjustable table legs, D. 60 mm, Steel
 Gambe per tavolo, D. 60mm, Acciaio
 Tischbeine, D. 60 mm, Stahl



L	Cod.						
710	20345	11	12	14	25	51	4
830	20342	11	-	-	25	51	4

Steel / Acciaio / Stahl

Adjustable table leg Fitwid
 Gambe regolabili per tavolo Fitwid
 Tischbein Fitwid, höhenverstellbar



L	Cod.		
710	32456	62	1
830	32458	62	1

Aluminium / Alluminio / Aluminium

Adjustable table legs, D. 80 mm, Aluminium
 Gambe per tavolo, D. 80 mm, Alluminio
 Tischbein höhenverstellbar, D. 80 mm, Aluminium



Ø	L	Cod.		
80	710	31124	62	1
80	830	31125	62	1
80	870	31217	62	1

Aluminium / Alluminio / Aluminium

Conus table leg, D. 60 mm, Steel
 Gambe per tavolo Conus D. 60 mm in acciaio
 Tischbein Conus D. 60 mm aus Stahl



Cod.		
30689	25	1

Steel and plastic /
 Acciaio e tecnoplastica
 / Stahl und Kunststoff



Adjustable feet Bone for furniture
Piedino regolabile per mobile
Nivellierfuß Bone für Möbel



H	Cod.			
100	39995	17		1
120	39990	17		1
150	39994	17		1
100	20324	17		10
120	20325	17		10
150	20326	17		10

Plastic / Tecnoplastica / Kunststoff

Adjustable feet Bone for furniture
Piedino regolabile per mobile
Nivellierfuß Bone für Möbel



H	Cod.			
100	20224	17		1
120	20225	17		1
150	20226	17		1

Plastic / Tecnoplastica / Kunststoff

Kit Adjustable feet for furniture Prisma
Piedino regolabile per mobile Prisma
Nivellierfuß für Möbel Prisma



H	Cod.			
90	20317	62		4
130	20318	62		4
150	20319	62		4

Aluminium and zamak / Alluminio e zama / Aluminium und zamak

Adjustable feet for furniture, D. 40 mm, Aluminium
Piedino livellatore per mobile D. 40 mm, Alluminio
Nivellierfuß für Möbel, D. 40 mm, Aluminium



H	Cod.			
140	20343	63		4
160	20344	63		4

Steel and plastic / Acciaio e tecnoplastica / Stahl und Kunststoff

Furniture feet Smartfeet
Piedino per mobile Smartfeet
Möbelfuß Smartfeet



H	Cod.				
100 - 110	20233	11	12	14	4
140 - 150	20234	11	12	14	4

Plastic / Tecnoplastica / Kunststoff

Furniture feet Smartfeet
Piedino per mobile Smartfeet
Möbelfuß Smartfeet



H	Cod.				
100 - 110	20235	11	12	14	2
140 - 150	20236	11	12	14	2

Plastic / Tecnoplastica / Kunststoff

Furniture feet Alumix 1
Piedino per mobile Alumix 1
Möbelfuß Alumix1



H	Cod.			
80	20396	25		4
100	20397	25		4
120	20398	25		4

Plastic / Tecnoplastica / Kunststoff

Furniture feet Alumix 8
Piedino per mobile Alumix 8
Möbelfuß Alumix8



H	Cod.			
12	31188	25		4
24	31189	25		4
12	20394	25		20
24	20395	25		20

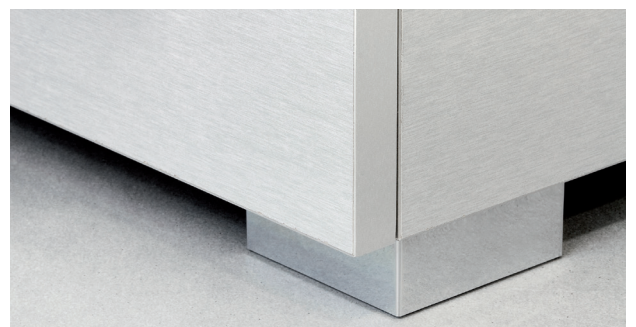
Plastic / Tecnoplastica / Kunststoff

Furniture feet Alumix 7
Piedino per mobile Alumix 7
Möbelfuß Alumix 7



H	Cod.			
100	20230	25		4
120	20231	25		4
150	20232	25		4
100	20393	25		20
120	20391	25		20
150	20392	25		20

Plastic / Tecnoplastica / Kunststoff



Adjustable feet for furniture with hexagonal base M6, with bolt
 Piedino regolabile a base esagonale M6 con bussola
 Nivellierfuß mit sechseckigem Fußteller, M6, mit Verstellerschraube



H	Cod.		
31	20200	15	20

Steel and plastic / Acciaio e tecnoplastica / Stahl und Kunststoff

Adjustable feet for furniture with hexagonal base M6
 Piedino regolabile per mobile, base esagonale
 Nivellierfuß für Möbel mit sechseckigem Fußteller, M6



H	Cod.		
20	20201	05	20
25	20202	05	20
30	20203	05	20

Steel and plastic / Acciaio e tecnoplastica / Stahl und Kunststoff

Adjustable feet for furniture with interior adjustment M10
 Piedino regolabile per mobile, base circolare, M10
 Nivellierfuß für Möbel mit inneren Regulierung, M10



H	Cod.		
38	20208	05	20
46	20209	05	20
61	20210	05	20

Steel and plastic / Acciaio e tecnoplastica / Stahl und Kunststoff

Adjustable feet for furniture with hexagonal base M8
 Regolabili per mobile M8, base esagonale e regolazione esterna
 Nivellierfuß mit sechseckigem Fußteller, M8



H	Cod.		
38	20206	05	20

Steel and plastic / Acciaio e tecnoplastica / Stahl und Kunststoff

Adjustable feet for furniture, circular base M6
 Piedino regolabile per mobile, base circolare, M6
 Nivellierfuß für Möbel mit rundem Fußteller, M6



Ø	Cod.		
35	20204	25	20
43	20205	25	20

Steel and plastic / Acciaio e tecnoplastica / Stahl und Kunststoff

Adjustable feet for furniture with circular base, M10
 Piedini regolabili con base circolare M10, D. 43 mm
 Nivellierfuß für Möbel mit rundem Fußteller, M10



H	Cod.		
37	20207	64	10

Steel and plastic / Acciaio e tecnoplastica / Stahl und Kunststoff

Ledown2 Circular leveller D12x76
 Regolabili Ledown2 circolari D12x76
 Runder Nivellierer Ledown2, D. 12 mm, H. 76 mm



H	Cod.		
70	20227	05	10

Steel and plastic / Acciaio e tecnoplastica / Stahl und Kunststoff

Max.
250 kg

Furniture leveller M10
 Regolabili per mobile M10
 Nivellierfuß für Möbel M10



H	Cod.		
46	20306	05	10

Steel and plastic / Acciaio e tecnoplastica / Stahl und Kunststoff

Nails sliders for furniture
 Pattini di protezione con chiodo per mobile
 Möbelgleiter mit Nagel



Cod.				
20303	15	16	17	100
20304	15	16	17	1.000

Steel and plastic / Acciaio e tecnoplastica / Stahl und Kunststoff

Pistons and springs Pistoni e braccetti / Türdämpfer und Klappenhalter

Spring for lift-up door Agile
Braccetto per ante a ribalta verso l'alto Agile
Klappenhalter für Hubtür Agile



Size	Cod.			
580 - 1.250	12130	15	23	1
960 - 2.040	12131	15	23	1
1.800 - 3.500	12132	15	23	1
3.200 - 9.000	12135	15	23	1

Steel and plastic / Acciaio e tecnoplastica / Stahl und Kunststoff



Batch of NSDX springs for lift-up doors
Kit Braccetti pensili per ante a ribalta verso l'alto NSDX
Klappenhalter-Set für Hubtüren NSDX



Size	Cod.		
20 - 70 kg x cm	12756	07	1

Steel and zamak / Acciaio e zama / Stahl und Zamak



Batch of NSDX springs for folding doors
Braccetti a ribalta NSDX
Klappenhalter-Set für Klapptüren NSDX



Size	Cod.		
20 - 70 kg x cm	12757	07	1

Steel and zamak / Acciaio e zama / Stahl und Zamak

Batch of NSDX springs for cabinet doors
Braccetto cassapanca NSDX
Klappenhalter-Set für Truhentüren NSDX



Size	Cod.		
20 - 70 kg x cm	12758	07	1

Steel and zamak / Acciaio e zama / Stahl und Zamak



Springs for folding doors
Braccetti per porte a battente
Klappenhalter für Klapptüren

Cod.			
10156	62		2

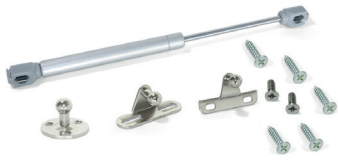
Aluminium and steel
Alluminio e acciaio
Aluminium und Stahl



Gas struts for lift-up doors
Pistone a gas per ante a ribalta verso l'alto con forza
Türdämpfer mit Gasdruck für Hubtüren

Size	Cod.		
5 kg - 100 mm	10059	25	1
8 kg - 100 mm	10057	25	1
11 kg - 100 mm	10058	25	1
5 kg - 80 mm	10109	25	1
8 kg - 80 mm	10056	25	1
11 kg - 80 mm	10080	25	1
5 kg - 100 mm	12744	25	10
8 kg - 100 mm	12742	25	10
11 kg - 100 mm	12743	25	10
5 kg - 80 mm	12749	25	10
8 kg - 80 mm	12741	25	10
11 kg - 80 mm	12745	25	10

Steel and plastic / Acciaio e tecnoplastica /
Stahl und Kunststoff



Gas struts for lift-up doors
Pistone a gas per ante a ribalta verso l'alto con forza
Türdämpfer mit Gasdruck für Hubtüren

Size	Cod.		
5 kg - 100 mm	12760	25	20
8 kg - 100 mm	12761	25	20
11 kg - 100 mm	12762	25	20
5 kg - 80 mm	12763	25	20
8 kg - 80 mm	12764	25	20
11 kg - 80 mm	12765	25	20

Steel and plastic / Acciaio e tecnoplastica /
Stahl und Kunststoff



Gas struts for folding doors
Pistone per ante a ribalta con forza
Türdämpfer mit Gasdruck für Klapptüren

Size	Cod.		
12 kg - 100 mm	10082	25	1
6 kg - 80 mm	10055	25	1
12 kg - 80 mm	10081	25	1
12 kg - 100 mm	12747	25	10
6 kg - 80 mm	12740	25	10
12 kg - 80 mm	12746	25	10

Steel and plastic / Acciaio e tecnoplastica /
Stahl und Kunststoff



Gas struts for folding doors
Pistone per ante a ribalta con forza
Türdämpfer mit Gasdruck für Klapptüren

Size	Cod.		
6 kg - 100 mm	12766	25	20
12 kg - 100 mm	12767	25	20
6 kg - 100 mm	12768	25	20
12 kg - 100 mm	12769	25	20

Steel and plastic / Acciaio e tecnoplastica /
Stahl und Kunststoff



Lateral hitch for doors with gas struts
Aggancio laterale per ante con pistoni
Seitlicher Befestiger für Türen mit Türdämpfer

Pivot	Cod.		
Yes	12770	07	20
No	12771	07	20

Steel / Acciaio / Stahl



Hook for doors with gas strut
Aggancio per ante a pistone
Befestiger für Tür mit Türdämpfer

Type	Cod.		
For wood / aluminum	12772	25	20
For aluminum	12773	25	20

Steel / Acciaio / Stahl



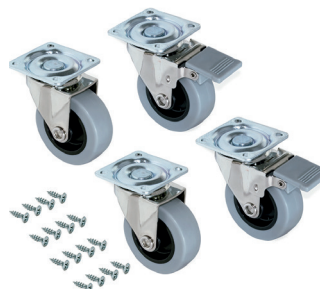
Slip transparent caster wheels with a mounting plate
Ruote Slip con piastra per montaggio
Rollen Slip mit Anschraubplatte



∅	Cod.		
50	20360	20	1
75	20361	20	1

Steel and plastic / Acciaio e tecnoplastica / Stahl und Kunststoff

Caster wheels Slip 2 with a mounting plate
Ruote Slip 2 con piastra per montaggio
Rollen Slip 2 mit Anschraubplatte



∅	Cod.		
50	20362	21	1
75	20363	21	1
100	20030	21	1
50 (M8 x 15)	20371	21	1

Steel and plastic / Acciaio e tecnoplastica / Stahl und Kunststoff



Caster wheels Slip with a mounting plate
Ruote Slip con piastra per montaggio
Rollen Slip mit Anschraubplatte



∅	Cod.		
50	20369	64	1
75	20370	64	1

Steel and plastic / Acciaio e tecnoplastica / Stahl und Kunststoff

Caster wheels Silent
Ruote Silent
Rollen Silent



∅	Cod.		
75	20372	21	1
75 (M10 x 20)	20373	21	1

Steel and plastic / Acciaio e tecnoplastica / Stahl und Kunststoff



Caster wheels Bowl with a mounting plate
Ruote Bowl con piastra per montaggio
Rollen Bowl mit Anschraubplatte



∅	Cod.		
50	20364	21	1
75	20365	21	1

Steel and plastic / Acciaio e tecnoplastica / Stahl und Kunststoff

Caster wheels for chest of drawers
Ruote per cassettera
Rollen für Schublade



∅	Cod.		
50	20366	17	1
40	20367	17	1

Steel and plastic / Acciaio e tecnoplastica / Stahl und Kunststoff

Caster wheels Bowl with a mounting plate
Ruote Bowl con piastra per montaggio
Rollen Bowl mit Anschraubplatte



∅	Cod.		
30	20368	17	1

Steel and plastic / Acciaio e tecnoplastica / Stahl und Kunststoff

Caster wheels for chest of drawers
Ruote per cassettera
Rollen für Schublade



∅	Cod.		
40	20378	17	1

Steel and plastic / Acciaio e tecnoplastica / Stahl und Kunststoff

Mak caster wheels D. 80 mm with a mounting plate
 Rotelle Mak D. 80 mm con piastra di montaggio
 Rollen Mak, D. 80 mm, mit Anschraubplatte



Ø	Cod.		
80	20379	21	1

Steel and plastic / Acciaio e tecnoplastica / Stahl und Kunststoff

Auxiliary caster wheels, D. 13 mm for rotating cover
 Rotelle ausiliari per mobile, D. 13 mm per piano girevole
 Hilfsrollen für Möbel D. 13 mm für Schwenkplatte



Ø	Cod.		
80	20399	05	20

Steel and plastic / Acciaio e tecnoplastica / Stahl und Kunststoff

Shelf supports Reggipiani / Regalstützen

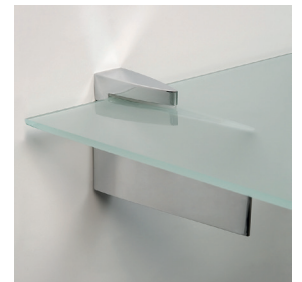
Zipp 2 Shelf support for Wood/Glass
 Supporto Zipp 2 per mensola in legno o vetro
 Bodenträger Zipp 2 für Holz- oder Glasregale



Cod.		
40096	25	2

Plastic and zamak / Tecnoplastica e zama / Kunststoff und Zamak

Zipp 3 Shelf support for Wood/Glass
 Supporto Zipp 3 per mensola in legno o vetro
 Bodenträger Zipp 3 für Holz- oder Glasregale



Cod.		
40097	25	2

Plastic and zamak / Tecnoplastica e zama / Kunststoff und Zamak

Aquila Shelf support for Wood/Glass
 Supporto Aquila per mensola in legno o vetro
 Bodenträger Aquila für Holz- oder Glasregale



Cod.		
40093	25	2

Plastic and zamak / Tecnoplastica e zama / Kunststoff und Zamak

Halcon Shelf support for Wood/Glass
 Reggipiano per mensole in legno/vetro Halcón
 Bodenträger Halcón für Holz- oder Glasregale



Cod.			
40092	24	25	2

Plastic and zamak / Tecnoplastica e zama / Kunststoff und Zamak

Venecia Shelf support for Wood/Glass
 Supporto Venezia per mensola in legno o vetro
 Bodenträger Venecia für Holz- oder Glasregale



Cod.		
40089	25	2

Plastic and zamak / Tecnoplastica e zama / Kunststoff und Zamak

Squad 2 Shelf support for Wood/Glass
 Supporto Squad 2 per mensola in legno o vetro
 Bodenträger Squad 2 für Holz- oder Glasregale



Cod.		
40091	25	2

Plastic and zamak / Tecnoplastica e zama / Kunststoff und Zamak

Mirlo Shelf support for Wood/Glass
 Supporto Mirlo per mensola in legno o vetro
 Bodenträger Mirlo für Holz- oder Glasregale



Cod.			
40095	25		2

Plastic and zamak /
 Tecnoplastica e zama /
 Kunststoff und Zamak

Azor shelf support for wood/glass
 Reggipiano per mensole di legno/vetro Azor
 Bodenträger Azor für Holz- oder Glasregale



Cod.			
40094	24	25	2

Plastic and zamak /
 Tecnoplastica e zama /
 Kunststoff und Zamak

Pelicano shelf support for Wood/Glass
 Supporto Pelicano per mensola in legno o vetro
 Bodenträger Pelicano für Holz- oder Glasregale



Cod.			
40090	25		2

Plastic and zamak /
 Tecnoplastica e zama /
 Kunststoff und Zamak

Hidden shelf support for wood
 Supporto a scomparsa Phantom per mensola in legno
 unsichtbarer Bodenträger Phantom für Holzregal



Cod.			
40099	25		2

Steel / Acciaio / Stahl

21AD Shelf support for Wood, D. 5 mm
 Supporto per mensole in legno 21A D. 5 mm
 Bodenträger für Holzregal 21A D. 5 mm



∅	Cod.			
5	40227	07		50

Zamak / Zama / Zamak

102 Straight shelf holder brackets for wood, D. 5 mm
 Squadra reggimensola con perno scanalato 102 per legno D. 5 mm
 Bodenträger mit kanneliertem Bolzen 102 D. 5 mm für Holz



∅	Cod.			
5	40229	07		50

Zamak / Zama / Zamak

074 Straight shelf holder brackets for wood D. 5 mm
 Squadra reggimensola con perno liscio 074 per legno D. 5 mm
 Bodenträger mit ebenem Bolzen 074 D. 5 mm für Holz



∅	Cod.			
5	40228	07		50

Zamak / Zama / Zamak

103 Shelf supports for wood with 2 bolt, D. 5 mm
 Supporto a due perni per mensola in legno 103 D. 5 mm
 Bodenträger mit 2 Bolzen für Holzregale 103 D. 5 mm



∅	Cod.			
5	40230	07		50

Zamak / Zama / Zamak

Shelf support for Wood, teaspoon
 Reggipiano per mensole in legno, a cucchiaino
 Bodenträger für Holzregale, Löffelform



∅	Cod.			
3	40231	07		50
5	40232	07		50

Zamak / Zama / Zamak

623 Tubular shelf support, D. 5 mm for Wood
 Reggipiani tondo 623 D. 5 mm per legno
 Bodenträger Röhrenform 623 D. 5 mm für Holz



∅	Cod.			
5	40233	07		50

Zamak / Zama / Zamak

097 Tubular shelf support, D. 3 mm for Wood
 Reggipiani tondo 097 D. 3 mm per legno
 Bodenträger Röhrenform 097 D. 3 mm für Holz



∅	Cod.			
3	40234	07		50

Zamak / Zama / Zamak

Shelf support for wood, with pivot
 Reggipiano per mensola in legno, con perno
 Bodenträger transparent für Holzregale, mit Zapfen



∅	Cod.			
3	40235	20		50
5	40236	20		50

Steel and plastic / Acciaio
 e tecnoplastica / Stahl und
 Kunststoff

Evo Shelf support for glass
Reggipiano per piani in vetro Evo
Bodenträger für Glasregale Evo



∅	Cod.		
5	40244	07	50

Zamak / Zama / Zamak



138 Shelf support for glass, D. 5 mm
Reggipiano per piani in vetro 138 D. 5 mm
Bodenträger für Glasregale 138 D. 5 mm



∅	Cod.		
5	40238	07	50

Plastic and zamak /
Tecnoplastica e zama /
Kunststoff und Zamak

557 Shelf support for glass
Reggipiano per mensole in vetro
Bodenträger für Glasregale



∅	Cod.		
3	40239	20	50
5	40240	20	50

Steel and plastic / Acciaio
e tecnoplastica / Stahl und
Kunststoff

21B Shelf support for glass D. 5 mm
Reggipiano per piani in vetro 21B D. 5 mm
Bodenträger für Glasregale 21B D. 5 mm



∅	Cod.		
5	40237	07	50

Plastic and zamak /
Tecnoplastica e zama /
Kunststoff und Zamak

561 Shelf support for glass, D. 5 mm
Reggipiano per piani in vetro 561 D. 5 mm
Bodenträger für Glasregale 561 D. 5 mm



∅	Cod.		
5	40246	07	50

Plastic and zamak /
Tecnoplastica e zama /
Kunststoff und Zamak

San Remo Shelf support for glass, D. 5 mm
Reggipiano per piani in vetro San Remo D. 5 mm
Bodenträger für Glasregale San Remo D. 5 mm



∅	Cod.		
5	40241	07	50

Plastic and zamak /
Tecnoplastica e zama /
Kunststoff und Zamak

Portofino Shelf support for glass, D. 5 mm
Reggipiano per piani in vetro Portofino D. 5 mm
Bodenträger für Glasregale Portofino D. 5 mm



∅	Cod.		
5	40245	07	50

Plastic and zamak /
Tecnoplastica e zama /
Kunststoff und Zamak

540 Transparent shelf support for glass
Supporto trasparente per mensole in vetro 540
Bodenträger transparent für Glasregale 540



∅	Cod.		
5	40247	20	50

Plastic / Tecnoplastica /
Kunststoff

Shelf support for glass with rubber
Reggipiano per mensole in vetro, con gomma
Bodenträger für Glasregale, mit Gummi



∅	Cod.		
3	40242	07	50
5	40243	07	50

Steel and plastic / Acciaio
e tecnoplastica / Stahl und
Kunststoff

Orlando furniture handle
Maniglia per mobile Orlando
Möbelgriff Orlando



L	Cod.		
128	92904	51	1
160	93527	51	1
192	92903	51	1
224	93528	51	1
256	92902	51	1
320	92901	51	1
384	92900	51	1
448	92925	51	1
128	91635	51	10
160	91636	51	10
192	91637	51	10
224	91638	51	10
256	91639	51	10
320	91640	51	10
384	91641	51	10
448	91642	51	10

Steel / Acciaio / Stahl



Seoul furniture handle
Maniglia per mobile Seoul
Möbelgriff Seoul



L	Cod.		
128	93081	51	1
192	93082	51	1
128	91643	51	20
192	91644	51	20

Steel / Acciaio / Stahl

Porto furniture handle
Maniglia per mobile Porto
Möbelgriff Porto



L	Cod.		
128	92978	51	1
160	92979	51	1
192	92980	51	1
224	92981	51	1
256	92982	51	1
128	91645	51	25
160	91646	51	25
192	91647	51	20
224	91648	51	20
256	91649	51	20

Steel / Acciaio / Stahl

Coimbra furniture handle
Maniglia per mobile Coimbra
Möbelgriff Coimbra



L	Cod.		
96	92988	11	64
128	92989	11	64
96	91633	11	64
128	91634	11	64

Steel / Acciaio / Stahl



Setubal furniture handle
Maniglia per mobile Setubal
Möbelgriff Setubal

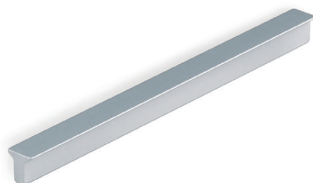


L	Cod.			
32	93002	51		1
128	93004	51		1
32	91660	51		25
128	91661	51		25

Aluminium / Alluminio / Aluminium



Dublin furniture handle
Maniglie per mobile Dublin
Möbelgriff Dublin



L	Cod.			
64	93031	62		1
128	93032	62		1
160	93033	62		1
64	91657	62		25
128	91658	62		25
160	91659	62		25

Aluminium / Alluminio / Aluminium

Glasgow furniture handle
Maniglia per mobile Glasgow
Möbelgriff Glasgow



L	Cod.			
64	93035	62		1
64	91629	62		25

Aluminium / Alluminio / Aluminium

Tulip1 adhesive furniture handle
Maniglia adesiva per mobile Tulip1
Selbstklebender Möbelgriff Tulip1



L	Cod.			
64	91621	62		20
94	91622	62		20
126	91623	62		20
158	91624	62		20

Aluminium / Alluminio / Aluminium

Tulip2 adhesive furniture handle
Maniglia adesiva per mobile Tulip2
Selbstklebender Möbelgriff Tulip2



L	Cod.			
62	91625	62		20
94	91626	62		20
126	91627	62		20
158	91628	62		20

Aluminium / Alluminio / Aluminium

Bristol furniture handle
Maniglia per mobile Bristol
Möbelgriff Bristol

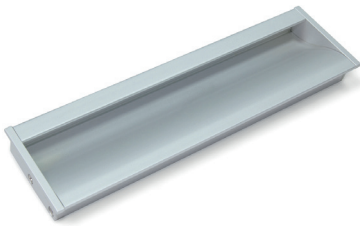


L	Cod.			
160	92945	11	62	1
256	92946	11	62	1
160	91631	11	62	20
256	91632	11	62	20

Aluminium / Alluminio / Aluminium



Bologna furniture handle
Maniglia per mobile Bologna
Möbelgriff Bologna



L	Cod.		
160	92922	62	1
160	91630	62	20

Aluminium / Alluminio / Aluminium

Verona Furniture knob
Pomolo Verona per mobile
Möbelknopf Verona



H	Cod.		
25	91671	62	25

Aluminium / Alluminio / Aluminium

Como furniture handle
Maniglia per mobile Como
Möbelgriff Como



L	Cod.		
96	91604	25	25

ABS - PVC

Bari furniture handle
Maniglia per mobile Bari
Möbelgriff Bari



L	Cod.		
64	91605	25	25
96	91606	25	25
128	91607	25	25
160	91608	25	25

ABS - PVC

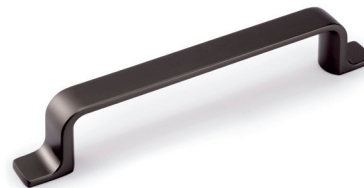
Kyoto furniture handle
Maniglia per mobile Kyoto
Möbelgriff Kyoto



L	Cod.		
96	93031	51 52	1
128	93032	51 52	1
160	93033	51 52	1
96	93557	51 52	20
128	93558	51 52	20
160	93559	51 52	20

Zamak / Zama / Zamak

Kobe furniture handle
Maniglia per mobile Kobe
Möbelgriff Kobe

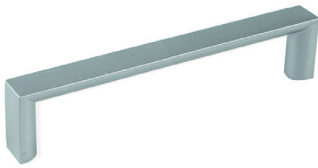




L	Cod.		
96	93560	51 52	1
128	93561	51 52	1
160	93562	51 52	1
96	91694	51 52	20
128	91695	51 52	20
160	91696	51 52	20

Zamak / Zama / Zamak



Fuji furniture handle
Maniglia per mobile Fuji
Möbelgriff Fuji





L	Cod. 			
96	93539	25	51	1
128	93540	25	51	1
160	93549	25	51	1
96	91610	25	51	25
128	91611	25	51	25
160	91662	25	51	25

Zamak / Zama / Zamak

Montreal furniture handle
Maniglia per mobile Montreal
Möbelgriff Montreal





L	Cod. 				
128	92917	11	25	51	1
160	92918	11	25	51	1
128	91653	11	25	51	20
160	91654	11	25	51	20

Zamak / Zama / Zamak

Habana furniture handle
Maniglia per mobile Habana
Möbelgriff Habana





L	Cod. 			
128	92986	51		1
160	92987	51		1
128	91612	51		25
160	91613	51		25

Zamak / Zama / Zamak



Shanghai furniture handle
Maniglia per mobile Shanghai
Möbelgriff Shanghai





L	Cod. 			
128	93158	51	64	1
128	91651	51	64	25

Zamak / Zama / Zamak

Tenerife furniture handle
Maniglia per mobile Tenerife
Möbelgriff Tenrife





L	Cod. 			
128	93152	11	25	1
128	91618	11	25	25

Zamak / Zama / Zamak

Bombay furniture handle
Maniglia per mobile Bombay
Möbelgriff Bombay





L	Cod. 			
128	92921	25	51	1
128	91609	25	51	20

Zamak / Zama / Zamak

Minneapolis furniture handle
Maniglia per mobile Minneapolis
Möbelgriff Minneapolis





L	Cod. 			
160	93155	51		1
160	91656	51		25

Zamak / Zama / Zamak

Papua furniture handle
Maniglia per mobile Papua
Möbelgriff Papua





L	Cod. 			
76	93491	08	68	1
76	91603	08	68	20

Zamak / Zama / Zamak

Nairobi furniture handle
Maniglia per mobile Nairobi
Möbelgriff Nairobi



L	Cod. 			
96	93493	08		1
96	91602	08		20

Zamak / Zama / Zamak

Nagoya furniture handle
Maniglia Nicaragua per mobile
Möbelgriff Nagoya



Cod.				
93556	51	52	1	
91664	51	52	10	

Zamak / Zama / Zamak

Lima furniture knob
Pomolo Lima per mobile
Möbelknopf Lima



Cod.				
93552	51		1	
91663	51		25	

Zamak / Zama / Zamak

Tucson furniture knob
Pomolo per mobile Tucson
Möbelknopf Tucson



Cod.				
92920	11	51	64	1
91650	11	51	64	25

Zamak / Zama / Zamak

Milano furniture knob
Pomolo per mobile Milano
Möbelknopf Milano



Cod.				
91655	51		25	

Zamak / Zama / Zamak

Santiago furniture knob
Pomolo per mobile Santiago
Möbelknopf Santiago



Cod.				
92995	51		1	
91652	51		25	

Zamak / Zama / Zamak

Reno furniture knob
Pomolo per mobile Reno
Möbelknopf Reno



Cod.				
91617	64		25	

Zamak / Zama / Zamak

Oregon furniture knob
Pomolo per mobile Oregon
Möbelknopf Oregon



Cod.				
92985	13	51	1	
91615	13	51	25	

Zamak / Zama / Zamak

Panama furniture knob
Pomolo per mobile Panama
Möbelknopf Panamá



Cod.				
92919	11	51	1	
91616	11	51	20	

Zamak / Zama / Zamak

Nime furniture knob
Pomolo per mobile Nimes
Möbelknopf Nimes



Cod.				
92977	51		1	
91614	51		25	

Zamak / Zama / Zamak

Vienna furniture knob
Pomolo per mobile Vienna
Möbelknopf Vienna



Ø	Cod.			
20	92983	-	51	1
25	92984	-	51	1
20	91619	13	51	25
25	91620	-	51	25

Zamak / Zama / Zamak

Mali Furniture knob
Pomolo per mobile Mali
Möbelknopf Mali



Cod.				
93470	08	14	1	
91600	08	14	25	

Zamak / Zama / Zamak

Marrakech furniture handle
Maniglia per mobile Marrakech
Möbelgriff Marrakech



Cod.				
93489	08	14	1	
91601	08	14	20	

Zamak / Zama / Zamak

Screws, nuts and brackets Perno, bussola y squadra / Schrauben, Muttern und Winkel

XZ self-tapping screw with Pozidrive flathead
Vite autofilettante XZ con testa piana Pozidrive
Verbindungsschraube XZ mit Flachkopf Pozidrive



Ø	L	Cod.		
3,5	16	40278	05	1.000
3,5	20	40279	05	1.000
3,5	30	40280	05	500
4	16	40281	05	500
4	20	40282	05	500
4	30	40283	05	500

Steel / Acciaio / Stahl

Pozidrive flathead euro screw
Vite Euro con testa piana Pozidrive
Euroschraube mit Flachkopf Pozidrive



Ø	L	Cod.		
6,2	11	40274	05 07	500
6,2	13	40275	05 07	500

Steel / Acciaio / Stahl

Extra flat head screw and M4 bolt
Vite maschio e femmina M4 con testa extrapiana
Gewindeschrauben mit extraflachem Kopf und Hülsenmuttern M4



Ø	L	Cod.		
10	14	40248	07	50
10	20	40249	07	50
10	25	40250	07	50
10	30	40251	07	50
10	35	40252	07	50
10	40	40253	07	50

Steel / Acciaio / Stahl

Self-tapping screw with Allen flathead screw
Vite autofilettante con testa piana Allen
Verbindungsschraube mit Flachkopf Allen



Ø	L	Cod.		
7	50	40276	05	500
5	50	40277	05	500

Steel / Acciaio / Stahl

Barbed bolt
Bussola ragno
Einschlagmutter



M	Cod.		
6	40254	05	20
8	40255	05	20
10	40256	05	20
6	40188	05	50
8	40189	05	50
10	40190	05	50

Steel / Acciaio / Stahl

Nut for countersunk holes
Bussola per fori svasati
Mutter für Senkbohrungen



M	Cod.		
6	40286	01 05	100
8	40287	01 05	100

Zamak / Zama / Zamak

M4 Brass expandable nuts
Bussola ad espansione M4 in ottone
Ausdehnbare Mutter M4 aus Messing



M	Cod.		
4	40284	02	100

Latón / Lation / Latão

M6 Brass expandable nuts with a sphere in their interior
Bussola ad espansione M6 in ottone con sfera interna
Ausdehnbare Mutter M6 aus Messing mit innerer Kugel



M	Cod.		
6	40285	02	100

Latón / Lation / Latão

Bolt for screwing
Bussola per avvitare
Schraubenmutter



M	Cod.		
8	40180	05	50
10	40181	05	50

Steel / Acciaio / Stahl

Flange bolt
Bussola con testa
Hutmutter



M	Cod.		
6	40182	05	50
8	40183	05	50
10	40184	05	50

Steel / Acciaio / Stahl

01 Natural zamak / Zama grezza / Natürliches Zamak
02 Natural Brass / Ottone naturale / Messing
05 Zinc plated / Zincato / Verzinkt
07 Nickel plated / Nichelato / Vernickelt
15 White plastic / Plastica bianca / Weisser Kunststoff

16 Brown / Marrone / Braun
17 Black plastic / Plastica nera / Schwarzer Kunststoff
19 Oak effect / Finitura rovere / Effekt Eiche
20 Transparent / Trasparente / Transparent
21 Grey plastic / Plastica grigia / Grauer Kunststoff

26 Cherry effect / Finitura ciliegio / Effekt Kirsche
27 Grey textile effect / Effetto tessuto grigio / Grauer Textil-Effekt
28 Beige textile effect / Effetto tessuto beige / Beiger Textil-Effekt
30 Beech effect / Effetto faggio / Buche gebeizt
78 Beech wood / Legno faggio / Buchenholz
83 Wenge effect / Effetto wengé / Wenge gebeizt

Wooden dowels
Spine in legno
Holzdübel



Ø	L	Cod.		📦
6	30	40220	78	100
8	30	40221	78	100
8	35	40222	78	100
8	40	40223	78	100
10	40	40224	78	100
6	30	40293	78	1.000
8	30	40294	78	1.000
8	35	40295	78	1.000
8	40	40296	78	1.000
10	40	40297	78	1.000

Wood / Legno / Holz

Adhesive bumpers
Paracolpi adesivo
Schutzpuffer, selbstklebend



Ø	L	Cod.		📦
10	3	40260	20	500
7	1,5	40261	20	500
10	1,5	40262	20	500

Plastic / Tecnoplastica / Kunststoff

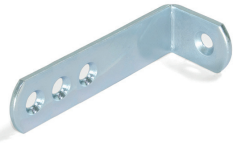
Adhesive screw covers
Tappi Copriforo adesivo
Abdeckkappe für Schrauben, selbstklebend



Ø	Cod.												📦
13	40263	15	16	17	19	21	23	26	27	28	30	83	1.000
13	40264	15	16	17	19	21	23	26	27	28	30	83	200
20	40265	15	16	17	19	21	23	26	27	28	30	83	900
20	40266	15	16	17	19	21	23	26	27	28	30	83	150

Plastic / Tecnoplastica / Kunststoff

Furniture brackets 70 x 22,5 mm
Squadra di unione per mobile 70 x 22,5 mm
Montagewinkel für Möbel, 70 x 22.5 mm



Size	Cod.		📦
70 x 22,5	40213	05	50

Steel / Acciaio / Stahl

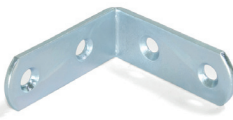
Furniture brackets, 34 x 23,5 mm
Squadra di unione per mobile, 34 x 23,5 mm
Montagewinkel für Möbel, 34 x 23.5 mm



Size	Cod.		📦
34 x 23,5	40211	05	50

Steel / Acciaio / Stahl

Furniture brackets 42 x 42 mm
Squadra di unione per mobile 42 x 42 mm
Montagewinkel für Möbel, 42 x 42 mm



Size	Cod.		📦
42 x 42	40215	05	50

Steel / Acciaio / Stahl

Furniture brackets, 20 x 20,7 mm
Squadra di unione per mobile 20,5 x 20,7 mm
Montagewinkel für Möbel, 20.5 x 20.7 mm



Size	Cod.		📦
34 x 23,5	40209	07	50

Zamak / Zama / Zamak

Jointing Plates for furniture
Piastra di unione 4 fori per mobile
Verbindungsplatte für Möbelerückwand



Cod.		📦
40217	05	50

Steel / Acciaio / Stahl

Pre-mounted triangular fixing for wardrobe backs
Fermaschiena triangolare pre-montato per armadi, Acciaio e Plastica, 50 u.
Rückwandverbinder dreieckig, vormontiert



Cod.		📦
40216	17	50

Acero y plástico /
Acier et plastique /
Aço e plástico

Circular clamp for rear wardrobe
Fermaschiena circolare per armadio
Verbindungsklammer rund für Möbelerückwand



Cod.		📦
40218	05	50

Steel / Acciaio / Stahl













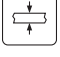














Rectangular clamp for rear wardrobe
Fermaschiena rettangolare per armadio
Verbindungsklammer rechteckig für Möbelerückwand








Cod.		📦
40219	05	50

Steel / Acciaio / Stahl

Simbology / Simbologia / Symbolik

 Cod. Code + Finishing Codice + Finitura Code + Ausführung	 With CE certificate Con certificato CE Mit CE-Zertifizierung	 Can be connected to various led lights Possibilità di connettere varie lampade Lichtquellen	 Comes with remote control Dispone di telecomando Verfügt über Fernsteuerung
 Soft closing Chiusura Soft Sanft schließend	 Degree of protection Grado di protezione Schutzgrad	 Manual cut Taglio manuale Manueller Schnitt	 Timer Temporizzatore Zeitschalter
 Thickness Spessore Dicke	 Energy efficiency class Classe d'efficacità energetica Energieeffizienzklasse	 Minimum distance of illuminated objects Distanza minima degli oggetti illuminati Mindestabstand beleuchteter Objekte	 Dimmer Dimmer Dimmer
 Espesor Epaisseur Espessura	 AMP connection Connessione AMP AMP-Verbindung	 Built-in lights Lampada ad incasso Einbauleuchte	 Detection angle of sensor Angolo d'azione del sensore Erkennungswinkel des Sensors
 Full overlay hinge Collo dritto Aufliegendes Topfscharnier	 Longitude of cable Lunghezza cavo Kabellänge	 Surface lights Lampada a superficie Anbauleuchte	 Detection range of sensor Raggio d'azione del sensore Erkennungsbereich des Sensors
 Overlay hinge Collo Mittelwinkel Topfscharnier	 Includes the elements for the assembly Include gli elementi per il montaggio Enthält Montagezubehör	 Diameter of holes Diametro di lavorazione Bohrlochdurchmesser	 Maximum length 5 m. Lunghezza massima 5 m. Maximale Länge 5 m.
 Insert hinge Collo alto Innenliegendes Topfscharnier	 Beam angle Fascio di luce Lichtstrahl	 LED light Lampada LED LED-Leuchte	

 3.000 - 3.900 K Luce calda Warm light Warmes Licht	 4.000 - 5.000 K Luce naturale Natural light Natürliches Licht	 5.100 - 7.000 K Luce fredda Cold light Kaltes Licht
----------------------------------------------------------------------------------------------------------------------------------------------	---------------------------------------------------------------------------------------------------------------------------------------------------------	-------------------------------------------------------------------------------------------------------------------------------------------------

 Use constant voltage converter Utilizzare convertitore a tensione costante Mit Konstant-Spannungswandler verwenden	 Without need to use LED-driver Senza necessità di utilizzare LED driver Kein LED-Konverter erforderlich
------------------------------------------------------------------------------------------------------------------------------------------------------------------------------------------------------------	-------------------------------------------------------------------------------------------------------------------------------------------------------------------------------------------------

 Runs off batteries Funziona con pile Batteriebetrieben	 Comes with sensor Dispone di sensore Verfügt über Sensor
-------------------------------------------------------------------------------------------------------------------------------------------------	---------------------------------------------------------------------------------------------------------------------------------------------------

Finishing / Finitura / Farbe

 Natural zamak Zama grezza Natürliches Zamak	 Black painted Verniciato nero Schwarz lackiert	 Matt nickel Nichel opaco Mattes Nickel	 Natural aluminium Alluminio naturale Natürliches Aluminium
 Natural Brass Ottone naturale Messing	 White plastic Plastica bianca Weisser Kunststoff	 Metal-grey Grigio metallizzato Metallgrau lackiert	 Matt anodized Anodizzato opaco Matt eloxiert
 Zinc plated Zincato Verzinkt	 Brown Marrone Braun	 Cherry effect Finitura ciliegio Effekt Kirsche	 Matt chrome plated Cromo opaco Matt verchromt
 Nickel plated Nichelato Vernickelt	 Black plastic Plastica nera Schwarzer Kunststoff	 Grey textile effect Effetto tessuto grigio Grauer Textil-Effekt	 Inox Inox Inox
 Bronzed Bronzato Bronze	 Oak effect Finitura rovere Effekt Eiche	 Beige textile effect Effetto tessuto beige Beiger Textil-Effekt	 Old silver Argento antico Altsilber
 Brassed Ottonato Messing	 Transparent Trasparente Transparent	 Beech effect Effetto faggio Buche gebeizt	 Anodizzato inox Inox eloxiert Rostfrei eloxiert
 Chrome plated Cromo Verchromt	 Grey plastic Plastica grigia Grauer Kunststoff	 Anthracite grey Grigio antracite Anthrazitgrau	 Beech wood Legno faggio Buchenholz
 White painted Verniciato bianco Weiss lackiert	 Oak effect Finitura rovere Effekt Eiche	 Satin finished anodized Nichel satinato Transparentes Nickel	 Wenge effect Effetto wenge Wenge gebeizt
 Moka painted Verniciato moka Mokka lackiert	 Anthracite grey Grigio antracite Anthrazitgrau	 Titanium Titanium Titanium	

A large rectangular area with a light gray background, containing 25 horizontal lines for writing notes.

emucaonline.com/en
emucaonline.com/it
emucaonline.com/de



CERTIQALITY
È MEMBRO DELLA
FEDERAZIONE CISO



06/2019